

MODULAR

# Smolder Smoke



FLOORING



# Smolder Smoke



## INSPIRATION

Mimicking the dense, crackled texture of Shou Sugi Ban, **Smolder** is a striking example of the dramatic transformation that results from naturally manipulating texture into something enduringly beautiful.

Enhancing that sublime, charred effect, **Smoke** ignites with a small-scale textural complexity, emulating muted flickering embers and fire fragments.

With their rich pile and hint of luster, Smolder and Smoke's ten neutral, subtly burnished shades will elevate any space they occupy.



(cover) SMOLDER, SMOKE // CEDAR // ashlar  
(right) SMOLDER // CEDAR // ashlar









SMOLDER // FUME // herringbone





SMOKE // FUME // ashlar





SMOKE // FUME // ashlar



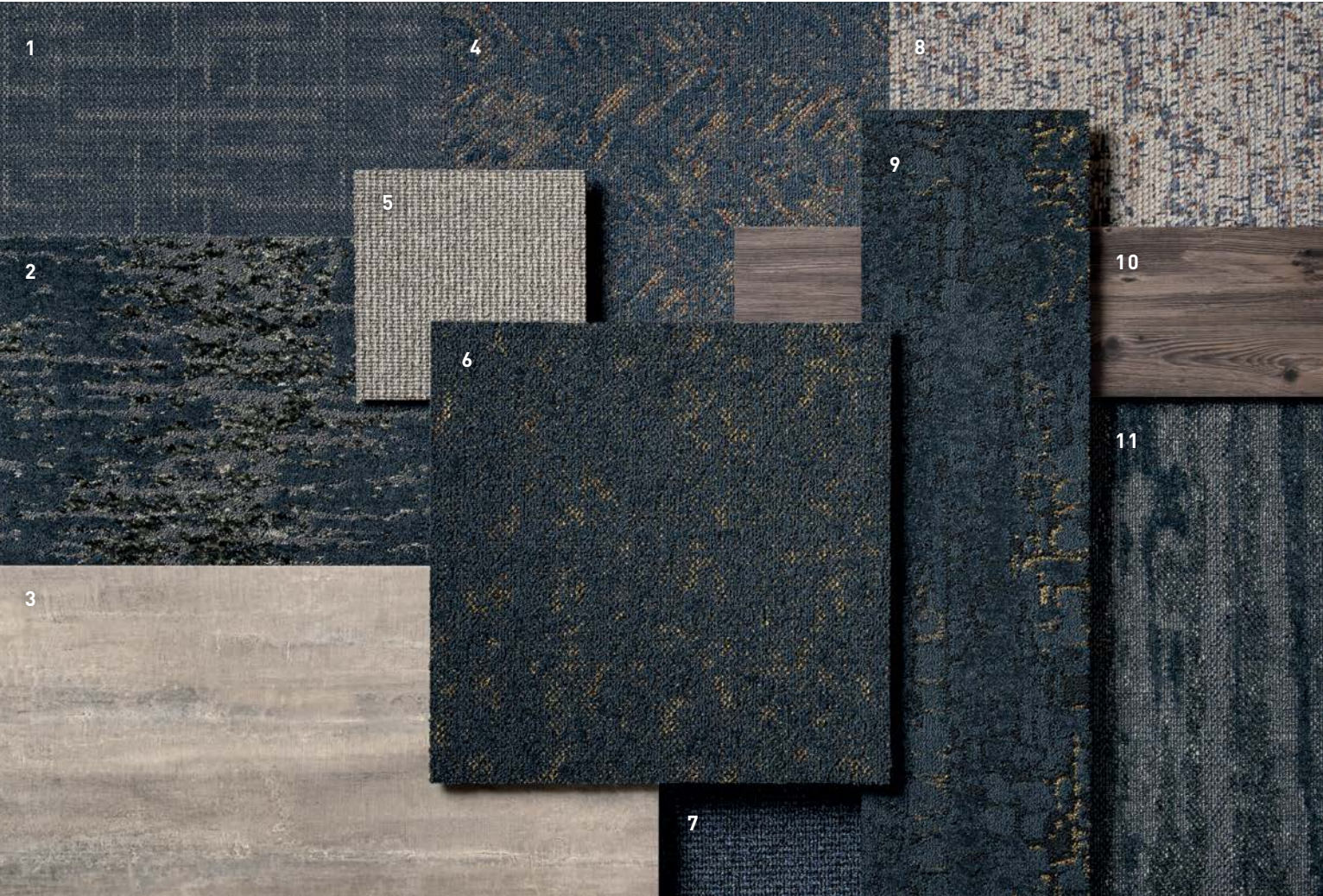


### COORDINATES

Beyond the beauty of individual products, our flooring coordinates effortlessly across all of our product platforms - modular carpet tile, broadloom, LVT and Kinetex textile composite flooring. This offering enables you to blend a range of designs with tonal simplicity to create palettes that reflect the demands of each unique space.

1. NETWORK // 1842 // #2853 Cyber // Kinetex	7. REED // 7800 // #3626 Twilight // Modular
2. FLOW // 7512 // #3763 Sand Dunes // Modular	8. AGAINST THE GRAIN // 1840 // #2825 Millet // Kinetex
3. QUILL // 7801 // #3626 Twilight // Modular	9. METAMORPHIC // 7717 // #2960 Feldspar // Modular
4. RECHARGE // V5054 + V5055 // #1179 Comfort // LVT	10. SMOLDER // 7715 // #3756 Technique // Modular
5. SMOKE // 7721 // #3756 Technique // Modular	11. COMPOSITION // 7507 // #3687 Morning light // Modular
6. TERRAZZO // V5035 + V5036 // #1119 Pebble // LVT	12. VALLEY // 6501 + 7501 // #3476 Desert // Broadloom + Modular





COORDINATES

Beyond the beauty of individual products, our flooring coordinates effortlessly across all of our product platforms - modular carpet tile, broadloom, LVT and Kinetex textile composite flooring. This offering enables you to blend a range of designs with tonal simplicity to create palettes that reflect the demands of each unique space.

1. MADRAS // 7065 // #2402 Twill // Modular

2. ATMOSPHERIC // 7713 // #3617 Indigo // Modular

3. LEGEND // V5009 + V5010 // #1059 Fiction // LVT

4. TWILL WEAVE // 7586 // #2880 Armure // Modular

5. STRUCTURE // 20100 // #3397 Bracket // Broadloom

6. SMOKE // 7721 // #2488 Ignite // Modular
7. STRUCTURE // 20100 // #1806 Spandrel // Broadloom

8. PUT A CORK IN IT // 1830 // #2197 Drum // Kinetex

9. SMOLDER // 7715 // #2488 Ignite // Modular

10. CLASSICS II // V5023 // #1009 Heritage // LVT

11. ORGANIC RAKU // 7062 // #3622 Ink // Modular



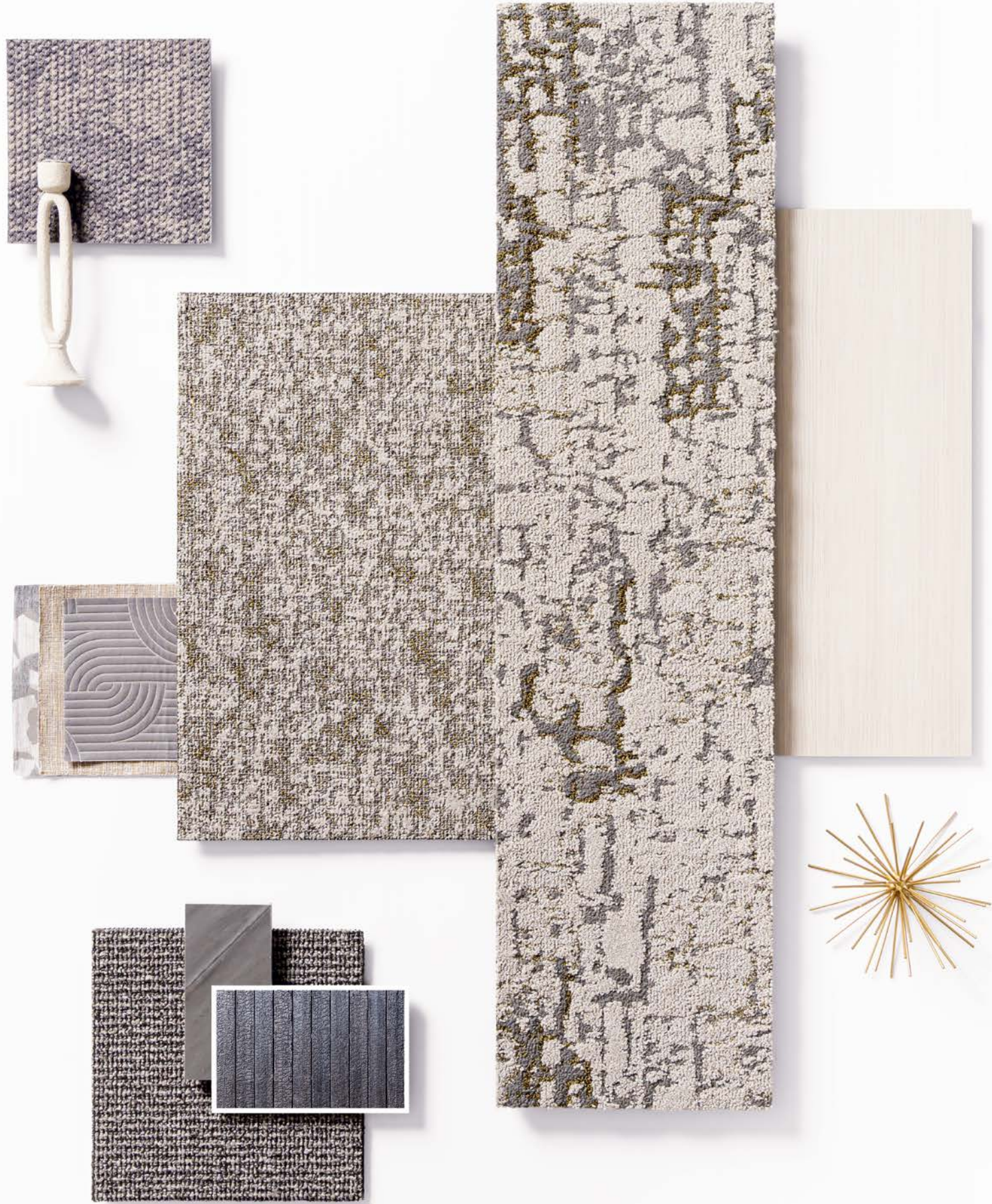
SMOKE // IGNITE // ashlar  
LEGEND // FICTION // ashlar





SMOKE // CRAFT // ashtar





# Smolder 12"x 48" MODULAR



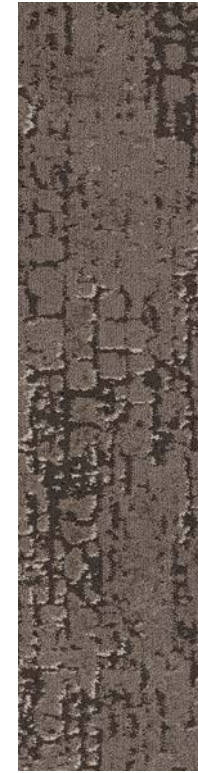
COLOR 3755  
cedar



COLOR 3754  
craft



COLOR 3757  
cypress



COLOR 2481  
fume



COLOR 2480  
ash



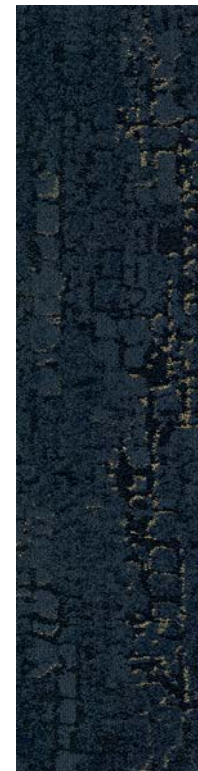
COLOR 3756  
technique



COLOR 2484  
cinder



COLOR 2487  
torch



COLOR 2488  
ignite



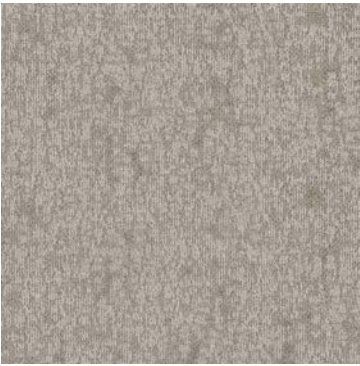
COLOR 2489  
ember



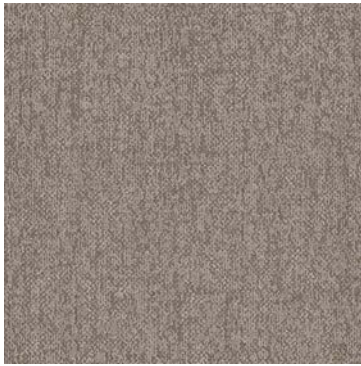
# Smoke 24"x 24" MODULAR



COLOR 3755  
cedar



COLOR 3754  
craft



COLOR 3757  
cypress



COLOR 2481  
fume



COLOR 2480  
ash



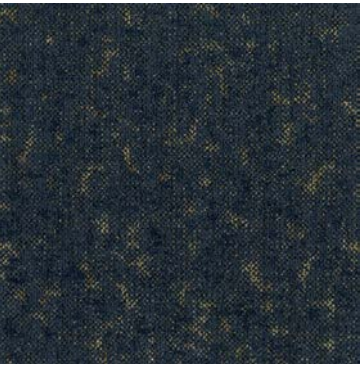
COLOR 3756  
technique



COLOR 2484  
cinder



COLOR 2487  
torch



COLOR 2488  
ignite



COLOR 2489  
ember



[back cover] **SMOLDER** // **IGNITE** // ashlar



FIBER

**Encore® BCF Nylon with ColorLoc® Plus**  
Encore BCF nylon with ColorLoc Plus is manufactured to offer exceptional color, performance and appearance retention. Carpet using Encore BCF nylon with ColorLoc Plus - our patented stain resistant technology - is engineered to resist permanent staining and is backed by Lifetime Performance Warranties for stain resistance, colorfastness, color transfer, water bleed, bleach resistance and wear.

MOISTURE

Are high levels of moisture in your concrete slab causing issues with your project’s floor covering? We can help.

- » Nexus® Modular Carpet with TileTabs – 99% RH
- » Cost-efficient
- » Long-term performance
- » Straightforward, easy-to-understand warranty
- » Requires no special floor preparation

STANDARD BACKING

**Nexus® Modular** products can be installed in a variety of ways and are performance engineered to be visually appealing. In addition, they are designed to accommodate your long-term flooring budget.

- » Manufactured in an ISO 14001 certified facility
- » Contains pre-consumer recycled content and contributes to LEED and other sustainable building standards
- » Eligible for landfill diversion through the J+J Flooring Reclamation Program

OPTIONAL BACKING:

**Advance Modular Carpet Backing™** is engineered to provide outstanding performance, protection and stability that is required of modular carpet systems.

- » PVC-Free
- » Contains recycled content and contributes to LEED
- » Eligible for landfill diversion through the J+J Flooring Reclamation Program

OTHER BACKING OPTIONS:

**Nexus® Cushion**  
**Nexus® FC Cushion**



Scan QR Code for backing details

TECHNOLOGIES

**ProTex® Anti-Soil Treatment**  
ProTex is a proprietary anti-soil treatment technology that is applied and bonded to the pile fiber to impede soiling and to improve cleanability. It is standard on all J+J Flooring products.

OPTIONAL:

**ProSept® Antimicrobial**  
**Sentir® Advanced Odor-Blocking Technology**

ADHESIVE

**Commercialon® Premium Modular Adhesive**  
A high strength acrylic latex-based carpet adhesive specifically formulated for bonding modular PVC backed carpet to the floor. This premium adhesive is for use with all Nexus Modular Tile products. This adhesive is guaranteed for the life of the installation when used in accordance with the J+J Flooring Carpet Installation Handbook. Commercialon Premium Modular Adhesive meets the CRI Low-VOC Emission Criteria, CRI ID# PSA-425402. Commercialon Premium Modular Adhesive is non toxic, has ultra-low odor and is antimicrobial in the dry state.

OPTIONAL:

**TileTabs - High Tack Adhesive Tabs** (modular only)

STYLE	Smolder 7715 modular	Smoke 7721 modular
CONSTRUCTION	multi-level tip sheared loop	tip sheared pattern loop
FIBER TYPE	Encore® SD Nylon and Encore® Nylon with ColorLoc Plus	Encore® SD Nylon and Encore® Nylon with ColorLoc Plus
DYE METHOD	solution/yarn dyed	solution/yarn dyed
OUNCE WEIGHT	36.0 oz./sy [1221 grams/m2]	23.0 oz./sy [780 grams/m2]
GAUGE	1/10 [3.94 rows/cm]	1/12 [4.72 rows/cm]
STANDARD BACKING	Nexus® Modular	Nexus® Modular
OPTIONAL BACKING	Advance Modular	Advance Modular
SIZE	12” x 48” [30.50 cm x 122.00 cm]	24” x 24” [61.00 cm x 61.00 cm]
PATTERN REPEAT	n/a	n/a
TOTAL THICKNESS (nominal average)	0.375 inches [0.953 cm]	0.257 inches [0.653cm]
SPECIAL TECHNOLOGY	ProTex® anti-soil treatment	ProTex® anti-soil treatment
OPTIONAL SPECIAL TECHNOLOGIES	ProSept® antimicrobial Sentir® advanced odor blocking treatment	ProSept® antimicrobial Sentir® advanced odor blocking treatment
PHYSICAL TESTING	flooring radiant panel (class 1) pill test – (passes) smoke density (less than 450 flaming) static generation – (less than 3.5 kv) ADA compliance (compliant for accessible routes)	flooring radiant panel (class 1) pill test – (passes) smoke density (less than 450 flaming) static generation – (less than 3.5 kv) ADA compliance (compliant for accessible routes)
FIBER WARRANTY	lifetime fiber performance for wear lifetime fiber performance for static lifetime stain removal lifetime colorfastness to light and atmospheric contaminants	lifetime fiber performance for wear lifetime fiber performance for static lifetime stain removal lifetime colorfastness to light and atmospheric contaminants
BACKING WARRANTY	lifetime for tuft bind strength (edge ravel, yarn pulls, zippering) lifetime against delamination lifetime dimensional stability	lifetime for tuft bind strength (edge ravel, yarn pulls, zippering) lifetime against delamination lifetime dimensional stability

MODULAR INSTALLATION METHODS



ashlar



basketweave



ashlar



brick



herringbone



parquet



monolithic



quarter turn

STRAIGHT-FORWARD WARRANTIES				
Warranty: Installed with TileTabs	Warranty: Installed with Commercialon® Premium Adhesive (non-prorated)	Warranty: Installed with any other adhesive	Max RH, pH: Installed without Commercialon® Premium Sealer	Max RH, pH: Installed with Commercialon® Premium Sealer
Lifetime	Lifetime	1 Year	90% RH, pH 9 (Nexus Modular & LVT Adhesive) 95% RH, pH 11 (Advance Modular / RH+ Adhesive)	99% RH, pH 11 (Tile Tabs) 97% RH, pH 11 (Commercialon Adhesive)



©2025 J+J Flooring Group, LLC - This unique design is protected under the U.S. Copyright Act of 1976. Any unauthorized copying or duplication of this design constitutes copyright infringement in violation of federal law. Due to the unique visual characteristics of modular carpets, pattern repeats and pattern run-off seams may appear more noticeable than in broadloom carpets. Such visual characteristics do not constitute a manufacturing defect, and as such, should be considered when selecting modular carpet and its installation.

These photographs are representations of the installation for this modular product. Your modular installation may look different than these photos depending upon individual tile placement, lighting, and overall space layout, including furnishings. Final tile placement and the resulting visual is thus the customer’s, and not J+J Flooring’s responsibility.





P.O. BOX 2207

DALTON, GA 30722

P 800 241 4586

F 706 275 4433

JJFLOORING.COM

OX4125M10

carpet | lvt | kinetex