

SMOLDER

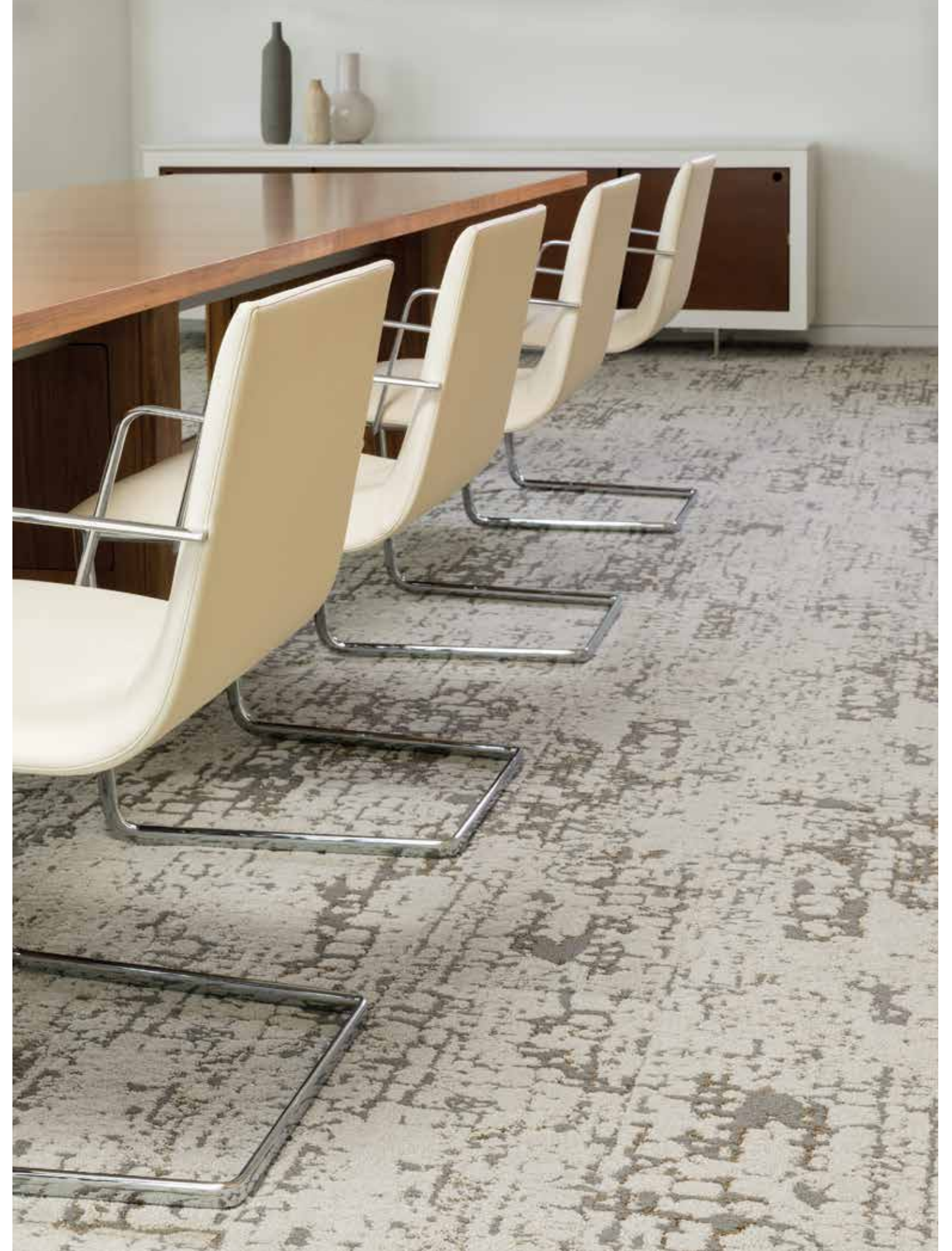


J+J FLOORING GROUP

From our establishment in 1957, we have become one of the oldest exclusive manufacturers of *commercial flooring* in the United States. As one of the largest privately held mills, our **FAMILY-OWNERSHIP** provides a *heritage* of proven performance and expansive industry knowledge. Most importantly, our focus has always been on *people...* ensuring them that our products deliver the highest levels of **BEAUTY, PERFORMANCE** and **DEPENDABILITY**.

carpet | lvt | **kinetex**

(cover) Smolder *Fume*, herringbone.
(right) Smolder *Ash*, ashlar.



SHOU SUGI BAN

A TRADITIONAL JAPANESE
METHOD OF PRESERVING
WOOD WITH FIRE.



smolder

Mimicking the dense, crackled texture of Shou Sugi Ban, Smolder is a beautiful example of naturally manipulated texture. With its rich pile and hint of luster, Smolder will elevate any space it occupies.

(right) **Smolder Fume**, ashlar.





(top) Smolder *Combust*, parquet. (page 8) Smolder *Ember*, ashlar.

SPECIFICATION

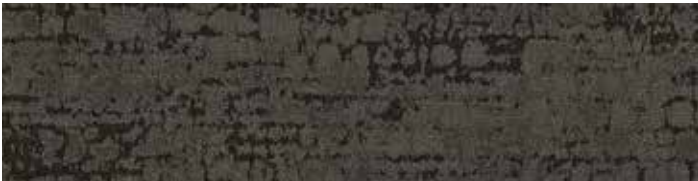
style	smolder 7715 modular
construction	multi-level tip sheared loop
fiber type	Encore® BCF nylon with ColorLoc® Plus
dye method	solution / yarn dyed
ounce weight	36 oz (1,220 grams)
gauge	1/10 (3.94 rows/cm)
backing	Nexus® modular
size	12" x 48" (30.48 cm x 122 cm)



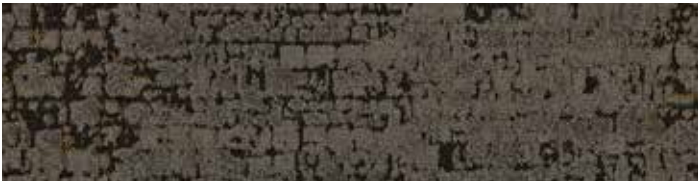
style 7715
color 2480
ash



style 7715
color 2482
kindle



style 7715
color 2484
cinder



style 7715
color 2486
blaze



style 7715
color 2488
ignite



style 7715
color 2481
fume



style 7715
color 2483
combust



style 7715
color 2485
smoke



style 7715
color 2487
torch



style 7715
color 2489
ember

smolder 7715



Smolder *Combust*, ashlar, with Milky Way *Black Mountain*, ashlar.

installation methods



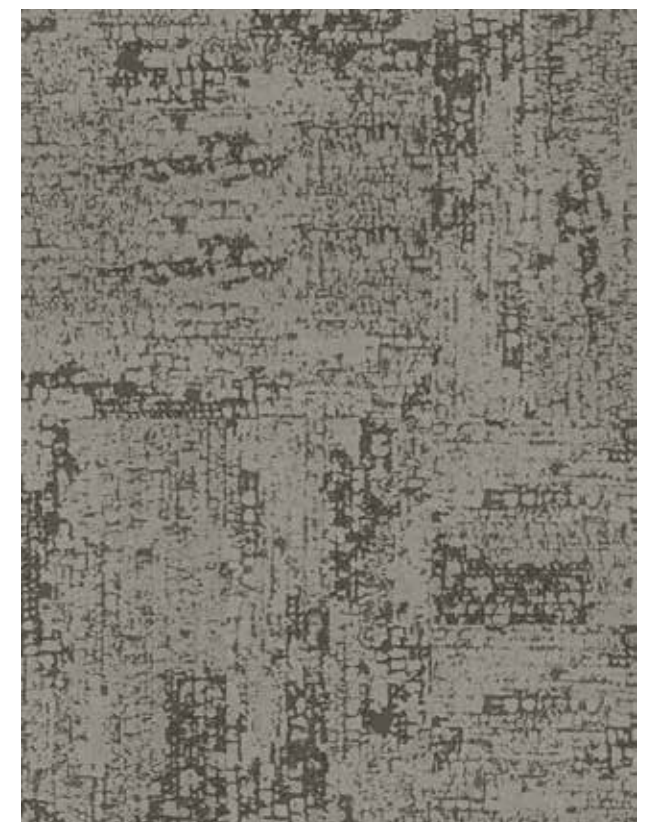
ashlar



basketweave



herringbone



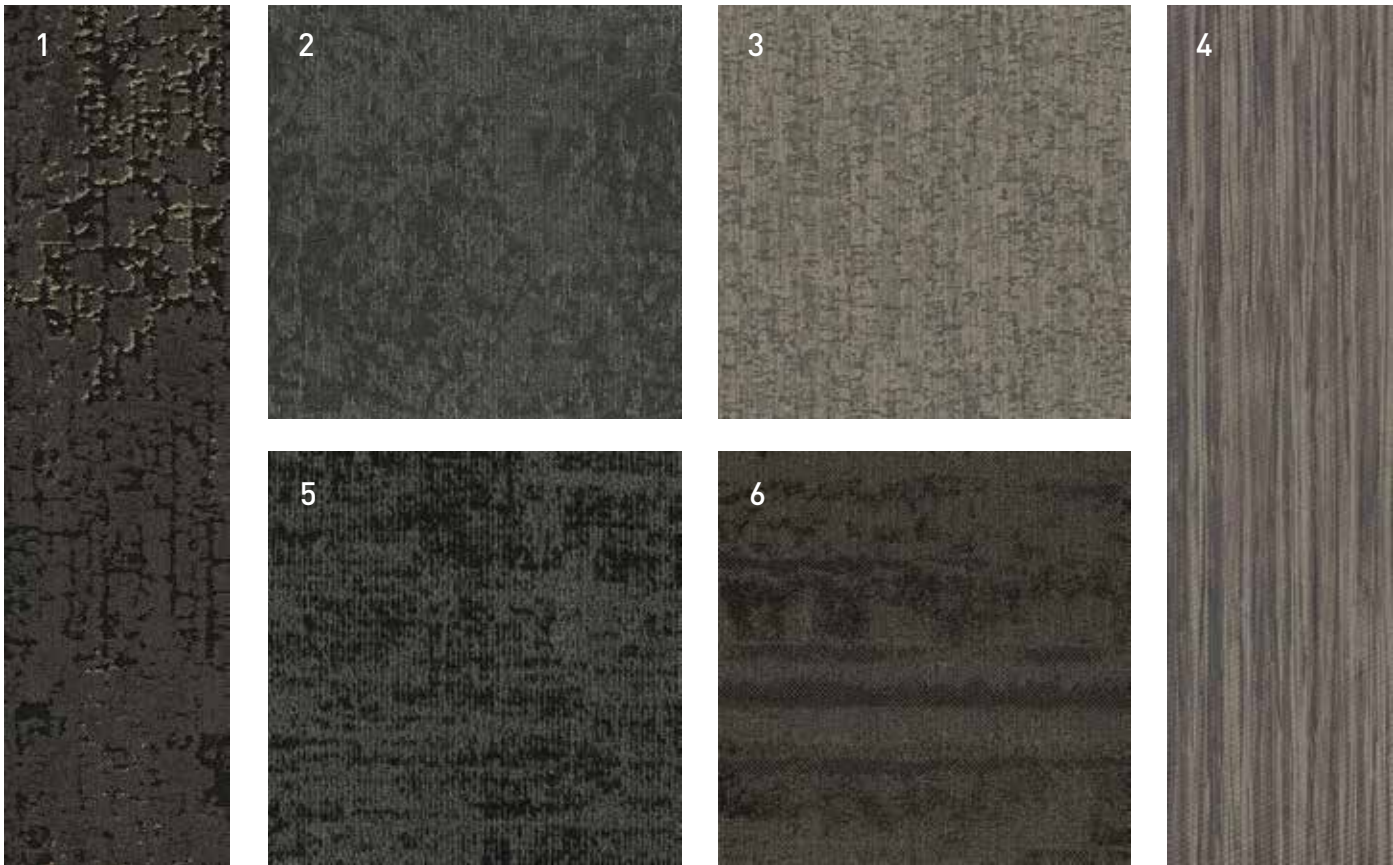
parquet



(above) **Smolder Ash**, ashlar, **Framework Partition**, third-drop.
 (page 14) **Smolder Combust**, parquet.
 (page 15) **Smolder Fume**, herringbone



coordinating palette



Beyond the beauty of individual products, our flooring coordinates effortlessly with each other. This offering enables you to blend a range of designs with tonal simplicity to create palettes that reflect the demands of each unique space.

1	Smolder	7715	#2487 Torch	Modular
2	Milky Way	7956	#2016 Darwin Wells	Modular
3	Put a Cork In It	1830	#2187 Decanter	Modular
4	Timber	1825	#1924 Catalpa	Modular
5	Craftwork	7099	#2209 Calligrapher	Modular
6	Stacked II	7581	#2234 Bryce	Modular



Smolder Ash, insert -basket weave, with Framework Partition surround.

product details

FIBER

Encore® BCF Nylon with ColorLoc® Plus

Encore BCF nylon with ColorLoc Plus is manufactured to offer exceptional color, performance and appearance retention. Carpet using Encore BCF nylon with ColorLoc Plus - our patented stain resistant technology - is engineered to resist permanent staining and is backed by Lifetime Performance Warranties for stain resistance, colorfastness, color transfer, water bleed, bleach resistance and wear.

BACKINGS

Nexus® Modular

Nexus modular products can be installed in a variety of ways and are performance engineered to be visually appealing. In addition, they are designed to accommodate your long-term flooring budget.

- Manufactured in an ISO 14001 certified facility
- Contains pre-consumer recycled content and contributes to LEED
- Recyclable through the J+J Flooring Group's R4 Carpet Reclamation Program

Adhesive

Commercialon® Premium Modular Adhesive

A high strength acrylic latex-based carpet adhesive specifically formulated for bonding modular PVC backed carpet to the floor. This premium adhesive is for use with all Nexus Modular Tile products. This adhesive is guaranteed for the life of the installation when used in accordance with the J+J FlooringGroup Carpet Installation Handbook. Commercialon Premium Modular Adhesive meets the CRI Low-VOC Emission Criteria, CRI ID# PSA-425402. Commercialon Premium Modular Adhesive is non toxic, has ultra-low odor and is antimicrobial in the dry state.

OPTIONAL:

TileTabs®

TECHNOLOGIES

ProTex® Anti-Soil Treatment

ProTex is a proprietary chemical technology that is applied and bonded to the pile fiber to impede soiling and to improve cleanliness. It is standard on all J+J Flooring Group products.

ProTex works similarly to the technology used in nonstick cookware by lowering the surface energy of the fibers which increases soil release properties. Very small soil particles cause carpet to appear dull. Thanks to ProTex, small soil particles are effectively removed by vacuuming or wet cleaning.

OPTIONAL:

ProSept® Antimicrobial

Sentir® Advanced Odor-Blocking Technology

corporate programs



Green Circle - Zero Waste to Landfill Operations Certification

We are proudly certified as a Zero Waste to Landfill manufacturer by GreenCircle Certified, LLC., a prominent third-party certifier of environmental claims. We are the first commercial flooring manufacturer in the United States to achieve this landfill free status and the first company in the industry to have its waste diversion efforts audited and verified by a recognized, third-party certifier.

To learn more about zero waste or our other initiatives see our sustainability progress report online at jjflooring.com/sustainability



We're on it.
The J+J Flooring Group Premium Customer Experience.

Our Premium Customer Experience is a carefully crafted process by which we guarantee that our customers will get the products, services and the reliability they expect from us.

To learn more visit:
jjflooring.com/customer-experience/

©2018 J&J Flooring Group, LLC - This unique design is protected under the U.S. Copyright Act of 1976. Any unauthorized copying or duplication of this design constitutes copyright infringement in violation of federal law.

Due to the unique visual characteristics of modular carpets, pattern repeats and pattern run-off seams may appear more noticeable than in broadloom carpets. Such visual characteristics do not constitute a manufacturing defect, and as such, should be considered when selecting modular carpet and its installation.

These photographs are representations of the installation for this modular product. Your modular installation may look different than these photos depending upon individual tile placement, lighting, and overall space layout, including furnishings. Final tile placement and the resulting visual is thus the customer's, and not J+J Flooring Group's responsibility.



style	smolder 7715 modular
construction	multi-level tip sheared loop
fiber type	100% Encore® BCF nylon with ColorLoc® Plus
dye method	solution / yarn dyed
ounce weight	36 oz/sy (1,220 grams/m²)
gauge	1/10 (3.94 rows/cm)
backing	Nexus® modular
size	12" x 48" (30.48 cm x 122 cm)
pattern repeat	n/a
total thickness (nominal average)	0.375 inches (0.95 cm)
special technology	ProTex® anti-soil treatment
optional special technologies	ProSept® antimicrobial Sentir® advanced odor blocking treatment
physical testing	flooring radiant panel (class 1) pill test – (passes) smoke density (less than 450 flaming) static generation -(less than 3.0 kv) ADA compliance (compliant for accessible routes)
warranties	lifetime fiber performance for wear lifetime fiber performance for static lifetime stain removal lifetime colorfastness to light and atmospheric contaminants lifetime for tuft bind strength (edge ravel, yarn pulls, zippering) lifetime against delamination lifetime dimensional stability

modular installation methods



ashlar



basketweave



herringbone



parquet



FLOORING GROUP

jjflooring.com

P.O. Box 1287
Dalton, GA 30722
p 800 241 4586
f 706 275 4433

carpet | lt | kinetex

A Division of Engineered
FLOORS