

MODULAR

QUICK SHIP

INTRINSIC COLLECTION

Intrinsic Intrinsic Accent Integral



FLOORING

INTRINSIC COLLECTION

Intrinsic
Intrinsic Accent
Integral



INSPIRATION

Bringing together the essential elements of texture, light and color, **Intrinsic's** grid pattern over soft neutrals creates a smart, modern aesthetic. The interaction of color and pattern creates a multi-layered effect, with a rough-hewn feel - the perfect backdrop for a variety of interiors.

Intrinsic Accent takes the Intrinsic pattern one step further by introducing understated, yet very definite elements of color. These pops of color come and go throughout the design- some more distinct against the ground color, some that blend quietly within the neutral base.

The geometric motif of **Integral** softens and blurs into Integral's organic cascade of abstract patterning. Beautifully fluid shapes of monochromatic neutrals provide a landscape versatile enough to transform a space to anything from quiet and elegant- to extraordinary and energetic.

This dynamic trio of patterns balance an overlay of repeating geometric and organic elements to create interesting depth, making this a dimensional, go-anywhere collection.



(cover) INTRINSIC // INNATE // ashlar // INTEGRAL // INNATE // monolithic
(right) INTRINSIC ACCENT // KEY ACCENT // monolithic





INTRINSIC // KEY // monolithic // INTRINSIC ACCENT // KEY ACCENT // monolithic



INTEGRAL // KEY // monolithic



INTEGRAL // KEY // monolithic



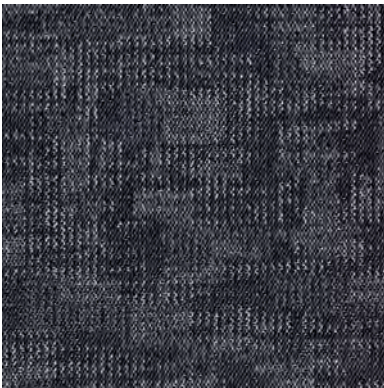
COORDINATES

Beyond the beauty of individual products, our flooring coordinates effortlessly across all of our product platforms - modular carpet tile, broadloom, LVT and Kinetex textile composite flooring. This offering enables you to blend a range of designs with tonal simplicity to create palettes that reflect the demands of each unique space.

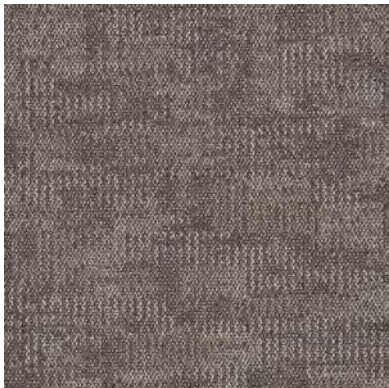
- 1. WELL VERSED II // 7072 // #3521 Woolf // Modular
- 2. OXFORD // 7063 // #2391 Muslin // Modular
- 3. AGAINST THE GRAIN // 1840 // #2825 Millet // Kinetex
- 4. INTRINSIC // 7096 // #2719 Essential // Modular
- 5. POWER PLAY // V5019 + V5020 // #1085 Dominance // LVT
- 6. INTEGRAL // 7310 // #2719 Essential // Modular
- 7. CRAFTWORK // 7099 + 6599 // #2200 Potter // Modular + Broadloom
- 8. INTRINSIC ACCENT // 7311 // #3563 Essential Accent // Modular
- 9. MADRAS // 7065 // #2391 Muslin // Modular
- 10. CLASSICS II // V5023 // #1089 Value // LVT
- 11. PROVISION // 1831 // #2277 Procurement // Kinetex

Intrinsic

24" x 24" MODULAR



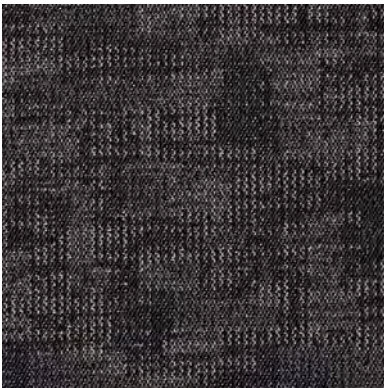
QUICK SHIP
COLOR 2722
innate



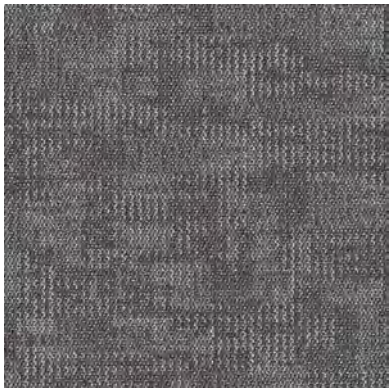
QUICK SHIP
COLOR 2719
essential



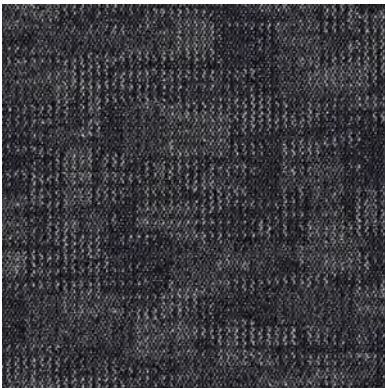
QUICK SHIP
COLOR 2717
authentic



QUICK SHIP
COLOR 2723
key



QUICK SHIP
COLOR 2718
central



QUICK SHIP
COLOR 2720
fundamental



QUICK SHIP
COLOR 2728
true



QUICK SHIP
COLOR 2726
inherent

ALL COLORS ARE AVAILABLE AS QUICK SHIP. Orders up to 1,500 square yards (13,500 sq. ft.) ship within 10 days.

Intrinsic Accent

24" x 24" MODULAR



QUICK SHIP
COLOR 3570
innate accent



QUICK SHIP
COLOR 3563
essential accent



QUICK SHIP
COLOR 3564
authentic accent



QUICK SHIP
COLOR 3565
key accent



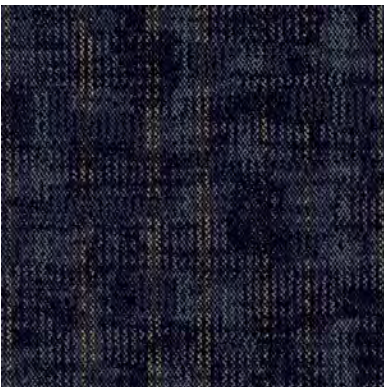
QUICK SHIP
COLOR 3566
central accent



QUICK SHIP
COLOR 3567
fundamental accent



QUICK SHIP
COLOR 3568
true accent



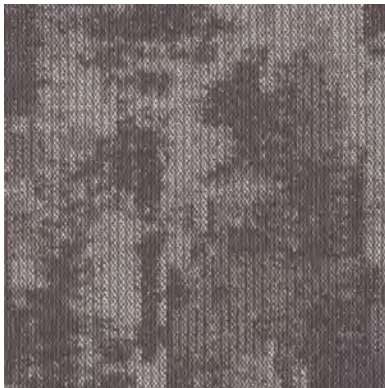
QUICK SHIP
COLOR 3569
inherent accent

ALL COLORS ARE AVAILABLE AS QUICK SHIP. Orders up to 1,500 square yards (13,500 sq. ft.) ship within 10 days.

Integral 24" x 24" MODULAR



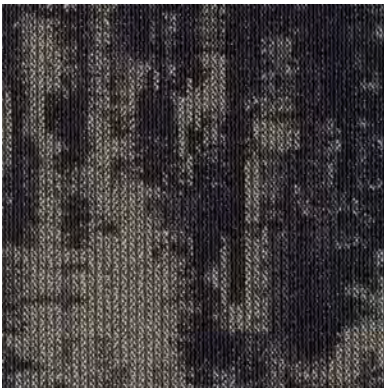
QUICK SHIP
COLOR 2722
innate



QUICK SHIP
COLOR 2719
essential



QUICK SHIP
COLOR 2717
authentic



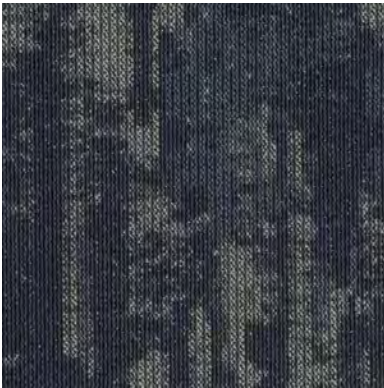
QUICK SHIP
COLOR 2723
key



QUICK SHIP
COLOR 2718
central



QUICK SHIP
COLOR 2720
fundamental



QUICK SHIP
COLOR 2728
true



QUICK SHIP
COLOR 2726
inherent

ALL COLORS ARE AVAILABLE AS QUICK SHIP. Orders up to 1,500 square yards (13,500 sq. ft.) ship within 10 days.



INTEGRAL // ESSENTIAL // brick
[back cover] INTRINSIC // INHERENT // monolithic

FIBER

Encore® SD Ultima® Nylon (with recycled content) is specifically engineered to maximize appearance retention with exceptional color, performance, sustainability and practicality.

BACKINGS

Nexus® Modular products can be installed in a variety of ways and are performance engineered to be visually appealing. In addition, they are designed to accommodate your long-term flooring budget.

- » Manufactured in an ISO 14001 certified facility
- » Contains pre-consumer recycled content and contributes to LEED
- » Recyclable through the J+J Flooring’s R4 Carpet Reclamation Program

ADHESIVE

Commercialon® Premium Modular Adhesive
A high strength acrylic latex-based carpet adhesive specifically formulated for bonding modular PVC backed carpet to the floor. This premium adhesive is for use with all Nexus Modular Tile products. This adhesive is guaranteed for the lifetime of the installation when used in accordance with the J+J Flooring installation instructions. Commercialon® Premium Modular Adhesive meets the CRI Low-VOC Emission Criteria, CRI ID# PSA-425402. Commercialon® Premium Modular Adhesive is non toxic, has ultra-low odor and is antimicrobial in the dry state.

OPTIONAL:
Commercialon® High Moisture Adhesive
TileTabs - High Tack Adhesive Tabs

MOISTURE

Are high levels of moisture in your concrete slab causing issues with your project’s floor covering? We can help.

- » Nexus® Modular Carpet with TileTabs – 99% RH
- » Cost-efficient
- » Long-term performance
- » Straightforward, easy-to-understand warranty
- » Requires no special floor preparation

TECHNOLOGIES

ProTex® Anti-Soil Treatment
ProTex is a proprietary anti-soil treatment technology that is applied and bonded to the pile fiber to impede soiling and to improve cleanability. It is standard on all J+J Flooring products.

OPTIONAL:
ProSept® Antimicrobial
Sentir® Advanced Odor-Blocking Technology

STYLE	intrinsic 7096 modular	intrinsic accent 7311 modular	integral 7310 modular
CONSTRUCTION	patterned loop	patterned loop	patterned loop
FIBER TYPE	100% Encore® SD Ultima® Nylon	100% Encore® SD Ultima® Nylon	100% Encore® SD Ultima® Nylon
DYE METHOD	solution dyed	solution dyed	solution dyed
OUNCE WEIGHT	15.0 oz./sy (509 grams/m²)	15.0 oz./sy (509 grams/m²)	15.0 oz./sy (509 grams/m²)
GAUGE	1/12 (4.72 rows/cm)	1/12 (4.72 rows/cm)	1/12 (4.72 rows/cm)
BACKING	Nexus® Modular	Nexus® Modular	Nexus® Modular
SIZE	24” x 24” (61.0 cm x 61.0 cm)	24” x 24” (61.0 cm x 61.0 cm)	24” x 24” (61.0 cm x 61.0 cm)
PATTERN REPEAT	n/a	n/a	n/a
TOTAL THICKNESS (nominal average)	0.25 inches (0.635 cm)	0.25 inches (0.635 cm)	0.25 inches (0.635 cm)
SPECIAL TECHNOLOGY	ProTex® anti-soil treatment	ProTex® anti-soil treatment	ProTex® anti-soil treatment
OPTIONAL SPECIAL TECHNOLOGIES	ProSept® antimicrobial Sentir® advanced odor blocking treatment	ProSept® antimicrobial Sentir® advanced odor blocking treatment	ProSept® antimicrobial Sentir® advanced odor blocking treatment
PHYSICAL TESTING	flooring radiant panel (class 1) pill test – (passes) smoke density (less than 450 flaming) static generation – (less than 3.5 kv) ADA compliance (compliant for accessible routes)	flooring radiant panel (class 1) pill test – (passes) smoke density (less than 450 flaming) static generation – (less than 3.5 kv) ADA compliance (compliant for accessible routes)	flooring radiant panel (class 1) pill test – (passes) smoke density (less than 450 flaming) static generation – (less than 3.5 kv) ADA compliance (compliant for accessible routes)
FIBER WARRANTY	lifetime fiber performance for wear lifetime fiber performance for static lifetime stain removal lifetime colorfastness to light and atmospheric contaminants	lifetime fiber performance for wear lifetime fiber performance for static lifetime stain removal lifetime colorfastness to light and atmospheric contaminants	lifetime fiber performance for wear lifetime fiber performance for static lifetime stain removal lifetime colorfastness to light and atmospheric contaminants
BACKING WARRANTY	lifetime for tuft bind strength (edge ravel, yarn pulls, zippering) lifetime against delamination lifetime dimensional stability	lifetime for tuft bind strength (edge ravel, yarn pulls, zippering) lifetime against delamination lifetime dimensional stability	lifetime for tuft bind strength (edge ravel, yarn pulls, zippering) lifetime against delamination lifetime dimensional stability

MODULAR INSTALLATION METHODS



ashlar



brick

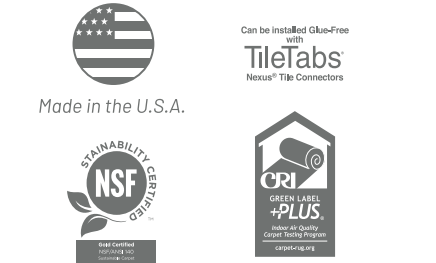


monolithic



quarter turn

STRAIGHT-FORWARD WARRANTIES					
Warranty: Installed with TileTabs	Warranty: Installed with Commercialon® Premium Adhesive and Commercialon® High Moisture Adhesive (non-prorated)	Warranty: Installed with any other adhesive	Max RH, pH: Installed without Commercialon® Premium Sealer	Max RH, pH: Installed with Commercialon® Premium Sealer	Max RH, pH: Installed with Commercialon® High Moisture Adhesive
Lifetime	Lifetime	1 Year	90% RH, pH 9	99% RH, pH 11 (TileTabs) 97% RH, pH 11 (Commercialon® Adhesive)	99% RH, pH12



©2023 J+J Flooring Group, LLC - This unique design is protected under the U.S. Copyright Act of 1976. Any unauthorized copying or duplication of this design constitutes copyright infringement in violation of federal law. Due to the unique visual characteristics of modular carpets, pattern repeats and pattern run-off seams may appear more noticeable than in broadloom carpets. Such visual characteristics do not constitute a manufacturing defect, and as such, should be considered when selecting modular carpet and its installation.

These photographs are representations of the installation for this modular product. Your modular installation may look different than these photos depending upon individual tile placement, lighting, and overall space layout, including furnishings. Final tile placement and the resulting visual is thus the customer’s, and not J+J Flooring’s responsibility.

MODULAR

QUICK SHIP



P.O. BOX 2207

DALTON, GA 30722

P 800 241 4586

F 706 275 4433

JJFLOORING.COM

MX7423M05

carpet | lvt | kinetex



FLOORING
A DIVISION OF ENGINEERED FLOORS