

kinetex
QUICK SHIP



Kinetex® Quick Ship

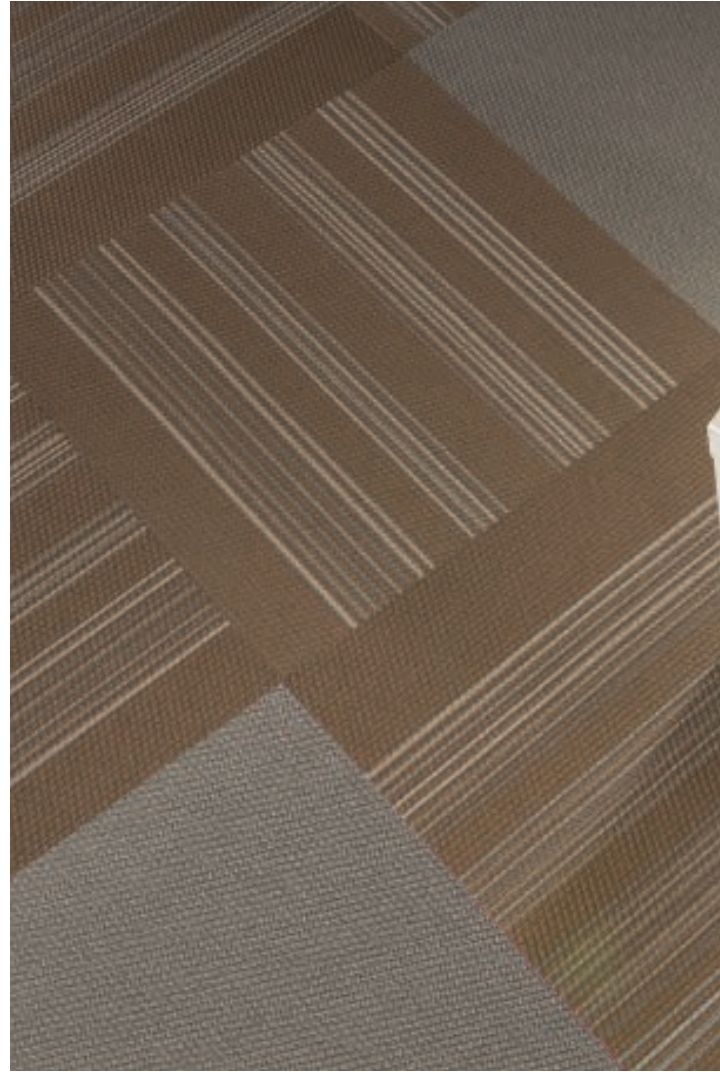
Sometimes schedules drive everything. For those times J+J Flooring Group offers the Kinetex quick ship program. This program ensures that some of our most popular Kinetex styles and colors will ship within 10 days for orders up to 1,500 square yards (13,500 sq.ft.) You can be sure that your flooring solution fits your precise design, budget and performance needs.

You need it quickly – we're on it.



FLOORING GROUP





(above) **Velocity Move** with **Accelerate Gain** and **Increase**. (top right) **Velocity Magnitude** with **Accelerate Increase**, quarter turn. (bottom right) **Velocity Constant** with **Accelerate Gain**, quarter turn.



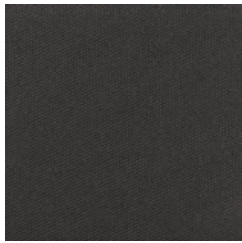
SPECIFICATION

style	accelerate 1813 / velocity 1814 modular
wear layer	solution dyed polyester
backing	polyester felt cushion
total weight (nominal average)	4.5 oz - 5.2 oz/ square foot
total thickness (nominal average)	0.205 inches
dimensions	24 x 24 inch modules
packaging	18 modules per box 72 square feet

ACCELERATE 1813



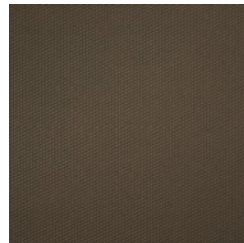
1593
increase



1594
gain



1598
speed



1599
rapid

VELOCITY 1814



1605
magnitude



1608
move



1609
constant



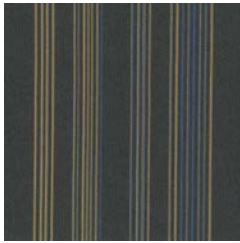
SPECIFICATION

style	boom 1828 / flash 1818 pop 1816 / propel 1817 modular
wear layer	solution dyed polyester
backing	polyester felt cushion
total weight (nominal average)	4.5 oz - 5.2 oz/ square foot
total thickness (nominal average)	0.205 inches
dimensions	24 x 24 inch modules
packaging	18 modules per box 72 square feet

BOOM



1931
old school

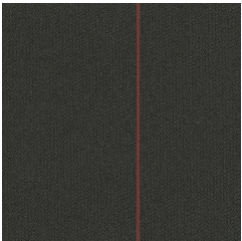


1936
free style

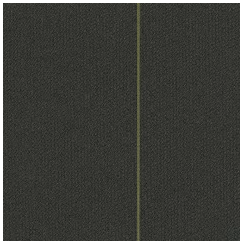


1937
step up

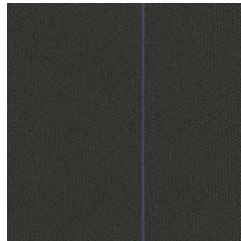
FLASH



1723
rojo

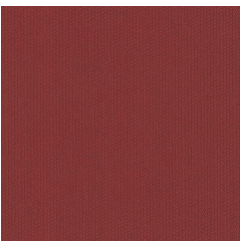


1721
verde

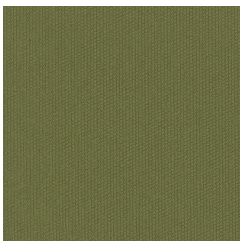


1728
azul

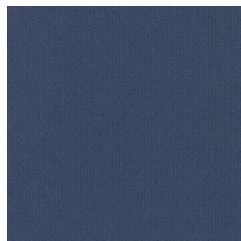
POP



1712
rojo

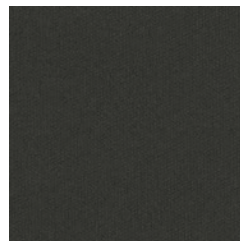


1715
verde



1719
azul

PROPEL

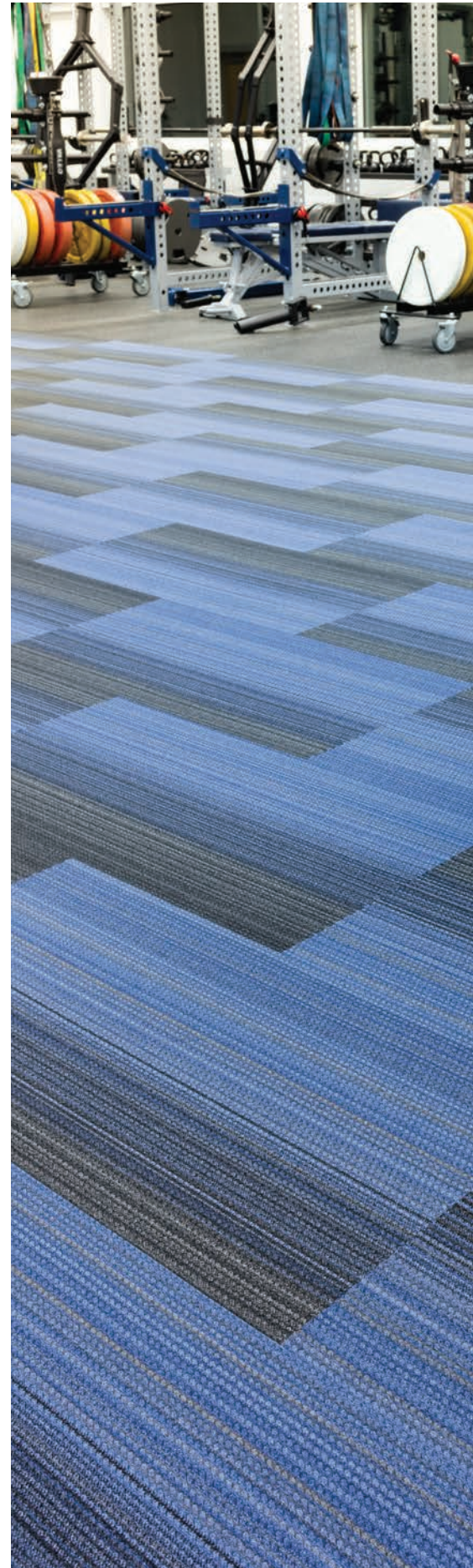


1708
outpace





(above) **Flash Azul** with **Pop Azul** and **Rojo**, quarter turn
 (top left) **Flash Verde** with **Pop Verde**, quarter turn
 (bottom left) **Boom Step Up** with **Pop Rojo** accent, quarter turn.





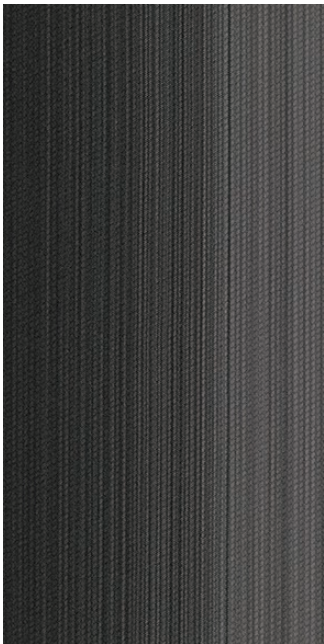
SPECIFICATION

style	umbra 1819
wear layer	solution dyed polyester
backing	polyester felt cushion
total weight (nominal average)	4.5 oz - 5.2 oz/ square foot
total thickness (nominal average)	0.205 inches
dimensions	18 x 36 inch modules
packaging	16 modules per box 72 square feet

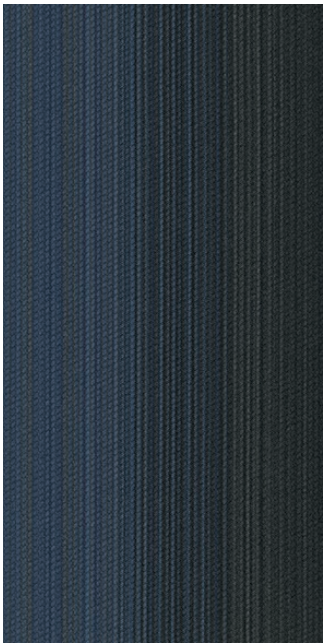
UMBRA 1819



1762
opaque



1764
shadow



1766
eclipse

(top left) *Umbra Opaque*,
basketweave with *Accelerate*
Rapid quarter turn.
(bottom left) *Umbra Shadow*,
herringbone. (right) *Umbra*
Eclipse, ashlar.

where to use kinetex

Healthcare

Acute care hospitals, medical office buildings, urgent care clinics, outpatient surgery centers, outpatient physical therapy/rehab centers, outpatient imaging centers, etc.

- Cafeteria, dining areas
- Chapel
- Computer room
- Corridors
- Diagnostic imaging suites
- Dry physical therapy
- Elevators
- Exam/procedure rooms
- Gift shops
- Hyperbaric treatment rooms
- Lobbies
- Nursing stations
- Offices/administration / conference rooms
- Patient rooms
- Pharmacy
- Ramps/ramped corridors
- Staff lounge
- Waiting rooms

Education

Early childhood development centers, preschool, k-12, higher education

- Auditoriums
- Classrooms/lecture halls
- Computer classrooms
- Dormitory rooms
- Food service areas
- Multipurpose rooms/cafetorium
- Ramps/ramped corridors
- Faculty/administrative offices
- Faculty lounge
- Libraries

Commercial Offices

Offices, call centers

- Offices
- Waiting areas
- Corridors
- Conference rooms
- Copy/mail rooms
- Break rooms
- Computer rooms

Fitness Centers

Health Clubs/Gyms

- Cardio Centers
- Stationary Weight Centers
- Dry Locker Room Areas
- Snack Bars
- Offices

Retail / Mercantile

Wholesale/Retail merchants

- Checkout/cash wrap
- Dressing rooms
- Sales floor
- Offices
- Employee break areas

Hospitality

Hotels

- Corridors
- Conference rooms
- Guest rooms
- Dining rooms
- Business centers
- Activity rooms
- Common areas
- Computer rooms

Transportation / Public Venues

Airports, bus/train stations, performing arts centers, athletic arenas

- Ticketing/baggage claim
- Concourses
- Jetways
- Conference rooms
- Waiting areas
- Administrative offices/ATC
- Airline clubs/USO
- Chapel
- Large public spaces
- Theaters

kinetex overview

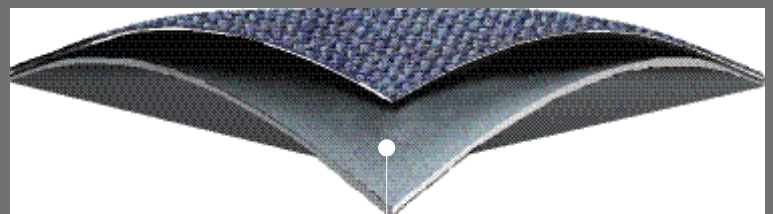


Kinetex® is an advanced textile composite flooring that combines key attributes of soft-surface floor covering with the long-wearing performance characteristics of hard-surface flooring. Created as a unique floor covering alternative to hard-surface products, J+J Flooring Group's Kinetex encompasses an unprecedented range of performance attributes for retail, healthcare, education and institutional environments. In addition to its human-centered qualities and highly functional design, Kinetex offers a reduced environmental footprint compared to traditional hard-surface options.

The key to the high-performance attributes of Kinetex lies within its construction. Each layer, when used together, creates a versatile, lightweight, soft-surface flooring designed with qualities parallel to that of hard-surface.

Kinetex Construction

Wear Layer/Face Fiber
Abrasion and Ravel
Resistant Knitted Fabric



Cushioned Backing
Polyester Felt

Performance by the Multitudes (and for the Multitudes)

A growing body of research correlates certain aspects of the built environment, such as acoustics, indoor air quality, glare and ergonomics, with measurable outcomes related to productivity, health, safety and effectiveness. Flooring can play a pivotal role in achieving positive outcomes when positioning these factors in many institutional environments. Combined with the practiced approach of evidence-based design, Kinetex provides a solid foundation for performance driven settings.

1 | Durability

With outstanding dimensional stability and crush resistance, Kinetex has withstood over 5 million foot traffic events with minimal wear at a popular Florida-based entertainment venue. That equates to more than the total number of people who have attended every Super Bowl since the first game, over 50 years ago.

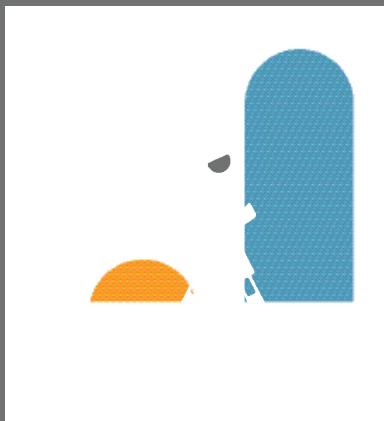
2 | Maintenance

Kinetex cleans easily with vacuuming, encapsulation cleaning or hot water extraction (in areas prone to heavy soiling). It retains less water than carpet and therefore dries quickly. Kinetex is bleach resistant* and resists the most challenging staining agents, such as blood, urine, betadine and hand sanitizers. The maintenance of Kinetex is simple and more cost efficient compared to that of hard-surface flooring. There is no need for stripping, wear layer application or buffing — saving time and materials.

* When using the recommended 5% bleach/ 95% water solution.

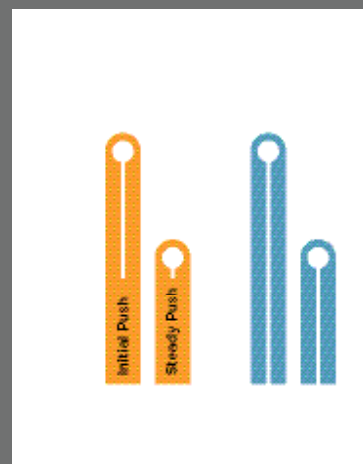
3 | Health

Kinetex easily surpasses California's 01350 requirements for low-VOC emissions and substantially minimizes airborne particles by sequestering common allergens, irritants and dust. In addition, bleach-resistant Kinetex is easily sanitized and has very short drying time when cleaned.



4 | Safety

Kinetex's unique construction creates one of the most slip resistant flooring surfaces ever tested, wet or dry — reducing the potential for slip and fall injuries. Its unique low profile also has minimal rolling resistance, potentially reducing injuries from pushing and pulling.

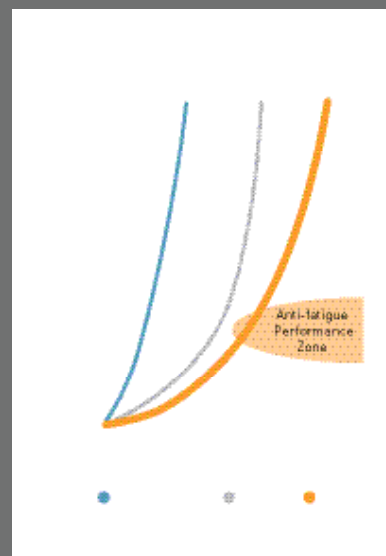


5 | Acoustics

Kinetex offers one of the highest Noise Reduction Coefficients and Impact Insulation Classifications of any commercial flooring product. This unparalleled acoustic performance results in dramatic reductions in both airborne and structure borne noise. Its excellent Impact Insulation Classification effectively promotes greater voice recognition, fewer mistakes, less vocal strain, enhanced learning and improved occupant perception.

6 | Comfort

Kinetex's high-density backing and soft textile surface provides exceptional anti-fatigue properties along with minimal rolling resistance. It embodies the potential to absorb energy and reduce both repetitive foot stress injuries as well as injuries related to walking and moving frequently from place to place.



7 | Sustainability

Due to its lower mass, Kinetex has a 50 percent lower environmental impact compared to other commercial floorings. With more than 55 percent recycled content, Kinetex is NSF/ANSI-140 Platinum certified. In addition, Kinetex is easily recycled into the next generation of itself; as easily as an aluminum can.

Kinetex Installation

Installing Kinetex is as easy as traditional modular carpet, however special attention should be applied until installers gain experience with module placement. Installers should perform site and material conditioning, surface preparation, concrete pH and moisture testing as if they were installing J+J Flooring Group carpet modules.

Kinetex uses J+J Flooring Group’s proven releasable Kinetex Adhesive with lifetime performance warranties. Because it is such a lightweight material, the modules cut very easily, reducing installation time. Kinetex also offers the flexibility to simply remove and replace individual modules if conditions warrant a quick fix (when using Kinetex Adhesive).

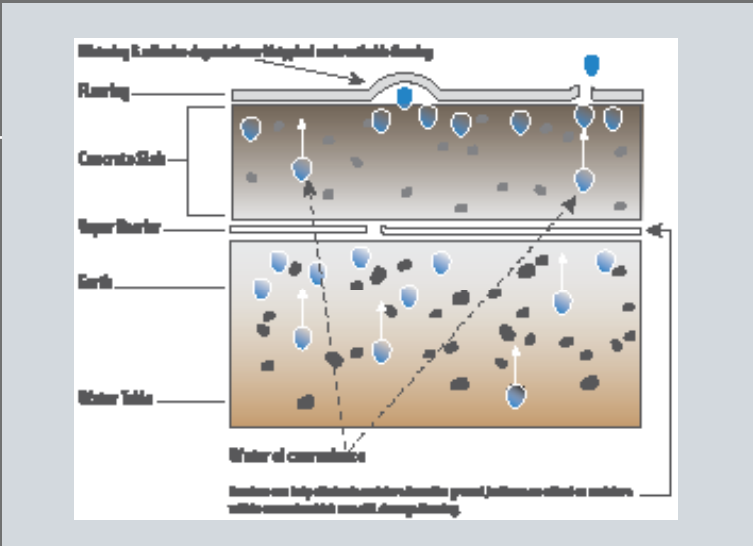
High-Tolerance Solution for Moisture Transmission in Concrete

If high moisture emission is discovered during concrete moisture testing, then proper precautions should be taken to prevent flooring system failures.

Kinetex will perform in elevated RH slabs up to 95% and up to 99% when using PreFix. The breathable nature of this product allows moisture to pass through the backing rather than trap it underneath. This method of vapor transmission allows Kinetex to be installed without costly moisture mitigation as long as the Relative Humidity Test reads 95% or below.

As a flexible option, we also offer PreFix Pre-Applied Releasable Adhesive. PreFix features a release liner that easily peels away to reveal a series of pre-applied adhesive strips that securely anchor the Kinetex module in place. PreFix is a quick installation option and is available on all Kinetex styles.

Please see the Kinetex installation instructions for full installation details.



Kinetex Maintenance

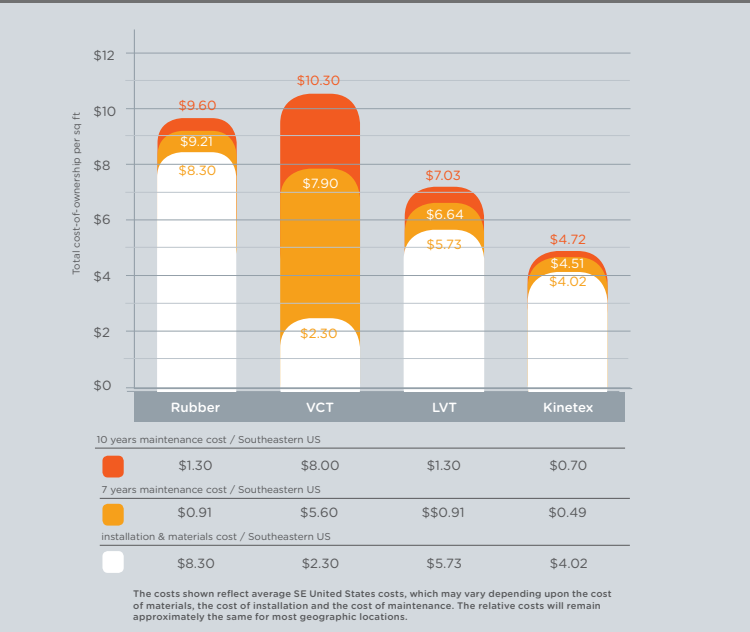
Kinetex is tough to wear out but easily cleaned. Regular vacuuming combined with interim low moisture encapsulation cleaning or hot water extraction in areas prone to heavy soiling is all that’s needed to keep Kinetex looking new. Because its lightweight face construction retains less water, Kinetex dries 75 percent faster than carpet, rendering it suitable for cleaning while occupied.

While wet, it has a highly reduced slip-coefficient when compared to a wet hard surface — which offers a much safer area for walking and standing.

Because Kinetex’s wear layer is bleach resistant, sanitizing and spot cleanings are easily performed without affecting color.¹ This low maintenance product also resists the most challenging staining agents, such as blood, urine, Betadine and hand sanitizer.

Please see the Kinetex maintenance instructions for full recommendations concerning schedules and cleaning supplies for preventative, daily and interim maintenance.

¹When using the recommended 5% bleach/ water solution.



Life Cycle Cost Comparison—
The True Cost of Ownership

Kinetex has a significant cost advantage over hard-surface floors, a critical factor at a time when administrators, managers and others are operating their facilities on greatly reduced budgets. The life cycle cost of ownership — defined as the cost of flooring materials, installation and maintenance over a seven to 10-year period — for Kinetex is approximately 51% less than rubber flooring, 33% less than LVT flooring and 55% less than VCT flooring. This offers substantial savings over the life span of the flooring installation.

corporate programs



Green Circle - Zero Waste to Landfill Operations Certification

We are proudly certified as a Zero Waste to Landfill manufacturer by GreenCircle Certified, LLC., a prominent third-party certifier of environmental claims. We are the first commercial flooring manufacturer in the United States to achieve this landfill free status and the first company in the industry to have its waste diversion efforts audited and verified by a recognized, third-party certifier. Any waste at our Dalton, Ga., campus that cannot be recycled, reused or repurposed – approximately two percent total waste – is sent to Covanta, the country's largest energy-from-waste operator. The waste received by Covanta is converted into energy to help provide steam power to the Redstone Arsenal, a U.S. Army garrison that services a number of tenants including the Army Materiel Command, the Missile Defense Agency of the Department of Defense and NASA's Marshall Space Flight Center.

Sustainability Progress Report

The J+J Flooring Group Sustainability Progress Report documents our journey toward increased environmental accountability and transparency. Each annual summary provides an update on sustainable advances in product development, resource reduction, certifications and progress toward the company's 20/20 Vision. To view our most recent Sustainability Progress Report visit www.jjflooringgroup.com/sustainability

R4®

In 2007, we developed the R4 program (return, reuse, recycle, reduce) specifically for our customers across the country to facilitate the recycling of all Invision carpet samples and architect folders that are no longer needed.

On average, we recycle/reuse 5,000 pounds of samples per month, which enables us to divert over 60,000 pounds of waste diverted from the landfills each year. We created this program to help ensure Invision architect folders or carpet samples will never reach a landfill.

The J+J Flooring Group R4 program is available to all customers in the contiguous United States. For customers in Canada, please contact us at 800-241-4586 x8020 or email answers@jjflooringgroup.com for details.



We're on it.
The J+J Flooring Group Premium Customer Experience.

At J+J Flooring Group, you're not an account. You are a customer, and most of all a person we are privileged to serve. That outlook is fundamental to our business. It's at the core of our family-owned heritage, and this unwavering personal service is not without its structure and discipline. In fact, we call it our Premium Customer Experience, and it's a carefully crafted process by which we guarantee that our customers will get the products, services and the reliability they expect from us. We may be a very people-focused company, but those people use a disciplined and developed framework to meet and exceed our customers' expectations.

product details

FIBER

Universal FibersSM

As a global leader in the production of solution dyed fiber in multiple chemistries, Universal Fibers enjoys a well-earned reputation for partnered innovation. Our durable lightweight PET fiber delivers unmatched performance for stain and abrasion resistance, colorfastness, and ease in care and maintenance. And, since Universal Fibers' products are solution dyed, zero water is used in the dye process.

Partnered with



WARRANTIES

We stand behind every aspect of Kinetex and extend certain lifetime warranties. Each warranty is covered for the useful life of the product, provided that installation and maintenance is in accordance with J+J Flooring Group's Kinetex Installation Instructions.

Wear Layer Warranties

- Lifetime Product Performance
- Lifetime Colorfastness to Light & Crocking
- Lifetime Stain Removal
- Lifetime Static Protection

Backing Warranties

- Lifetime Protection from Edge Ravel
- Lifetime Protection from Delamination Failure
- Lifetime Dimensional Stability

ADHESIVES

Kinetex[®] Adhesive

By design, Kinetex uses J+J Flooring Group's proven releasable Kinetex Adhesive with lifetime performance warranties. Because it is such a lightweight material, the modules cut very easily, reducing installation time. Kinetex also offers the flexibility to simply remove and replace individual modules if conditions warrant a quick fix.

ACCOLADES

Kinetex is one of the most extensively tested flooring products to ever be introduced. In addition to its unprecedented range of performance attributes, the human-centered qualities and highly functional design have quickly garnered attention. Below is a list of current awards and recognitions that Kinetex has received.

- **2015 Nightingale Award Gold, Hard Surface (Umbra / Umbra Stripe)**
- **2015 Best of NeoCon, Hard Surface – Silver Award (Umbra / Umbra Stripe)** (Contract Magazine)
- **2014 Top Ten Green Building Product** (BuildingGreen, Inc.)
- **2014 Greenstep Award** (Floorcovering Weekly)
- **2014 Grand Prize Winner for Product Innovations** (Buildings Magazine)
- **2014 Excellence in Product Development** (British Institute of Facilities Management)

product flexibilities

ALTERNATE ADHESIVES



PreFix[™] Pre-Applied Releasable Adhesive

J+J PreFix, a quick installation for all Kinetex textile composite flooring products. The release liner easily peels away to reveal a series of pre-applied adhesive strips that securely anchor the Kinetex module in place.

©2016 J&J Industries - This unique design is protected under the U.S. Copyright Act of 1976. Any unauthorized copying or duplication of this design constitutes copyright infringement in violation of federal law.

Due to the unique visual characteristics of modular carpets, pattern repeats and pattern run-off seams may appear more noticeable than in broadloom carpets. Such visual characteristics do not constitute a manufacturing defect, and as such, should be considered when selecting modular carpet and its installation.

These photographs are representations of the installation for this modular product. Your modular installation may look different than these photos depending upon individual tile placement, lighting, and overall space layout, including furnishings. Final tile placement and the resulting visual is thus the customer's, and not J+J Flooring Group's responsibility.

*NRC rating is a measure of the effectiveness of a material in absorbing sound. The higher the NRC rating, the greater the ability of the flooring product to absorb airborne noise. Independent laboratory testing of Kinetex has shown an average NRC rating of 0.33 (bare concrete flooring will typically provide a NRC Rating of 0.015).

**IIC is a rating of the insulation from impact noise. The higher the IIC rating, the greater the sound insulation. Independent laboratory testing of Kinetex has shown an average IIC Rating of .64 (bare concrete flooring will typically provide an IIC Rating of 34) NOTE: Test results and testing laboratory will vary, and the above information is not guaranteed.

style accelerate 1813 / boom 1818 / flash 1818 umbra 1819 modular
pop 1816 / propel 1817 / velocity 1814 modular

Physical Characteristics

wear layer	Universal Fibers solution died polyester	Universal Fibers solution dyed polyester
backing	polyester felt cushion	polyester felt cushion
total weight (nominal average)	4.5 oz – 5.2 oz / square feet	4.5 oz – 5.2 oz / square feet
total thickness (nominal average)	0.205 inches	0.205 inches
dimensions	12 x 18 inch modules	18 x 36 inch modules
packaging	eighteen modules per box, 72 square feet	sixteen modules per box, 72 square feet

Environmental Attributes

recyclability	100% closed-loop recyclable	100% closed-loop recyclable
recycled content	>55% (post consumer/industrial)	>55% (post consumer/industrial)
LEED scorecard	IEQ 4.1 and IEQ 4.3	IEQ 4.1 and IEQ 4.3
NSF/ANSI 140 certification	platinum	platinum

Testing

flooring radiant panel	class 1	class 1
smoke density	less than 450 (flaming & non-flaming)	less than 450 (flaming & non-flaming)
electrostatic propensity	less than 3.0 kv	less than 3.0 kv
colorfastness to light	rating of 4.0 or greater	rating of 4.0 or greater
colorfastness to crocking	rating of 4.0 or greater	rating of 4.0 or greater
water repellency	rating of 4.0 or greater	rating of 4.0 or greater
appearance retention	4.5 or greater	4.5 or greater
slip resistance	Complies with ADA Guidelines for level surface	Complies with ADA Guidelines for level surface
thermal insulation	R-4	R-4
noise reduction coefficient	NRC Rating: 0.30*	NRC Rating: 0.30*
impact insulation classification	IIC Rating: 64**	IIC Rating: 64**
stain resistance	resists most challenging stains	resists most challenging stains

adhesives

indoor air quality certification	CRI Green Label Plus™	CRI Green Label Plus™
----------------------------------	-----------------------	-----------------------

Installation Methods



quarter turn



parquet



basketweave



herringbone



ashlar





jjflooringgroup.com

P.O. Box 1287
Dalton, GA 30722
p 800 241 4586
f 706 275 4433

INVISION **kinetex**

