

kinetex

QUICK SHIP

# Against the Grain Catalyst Downtown Network Propel



FLOORING



# QUICK SHIP

Sometimes schedules drive everything. For those times, J+J Flooring offers the Kinetex Quick Ship Program. This program ensures that some of our most popular Kinetex styles and colors will ship from within 10 days for orders up to 1,500 square yards (13,500 sq. ft.). You can be sure that your flooring solution first precised design, budget, and performance needs. When you need it quickly, we're on it.



(cover) AGAINST THE GRAIN // MILLET // ashlar  
(right) AGAINST THE GRAIN // MILLET // parquet





# Against the Grain

18" x 36" MODULAR



STYLE 1840  
COLOR 2819  
barley



STYLE 1840  
COLOR 2825  
millet





CATALYST // ACCELLORATOR // ashlar

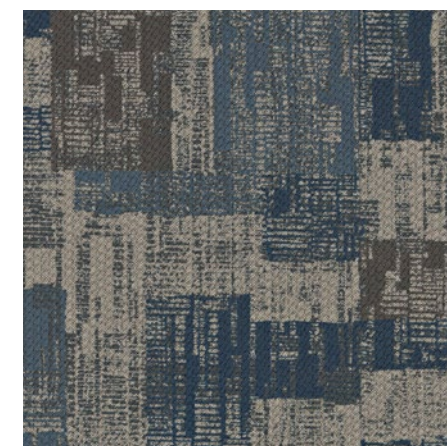


CATALYST // PHASE // ashlar

# Catalyst 24"x 24" MODULAR



STYLE 1841  
COLOR 2845  
phase



STYLE 1841  
COLOR 2846  
accelerator





DOWNTOWN // BOURBON // quarter turn

# Downtown 24" x 24" MODULAR



STYLE 1850  
COLOR 3153  
route 66



STYLE 1850  
COLOR 3156  
bourbon



DOWNTOWN // ROUTE 66 // ashlar



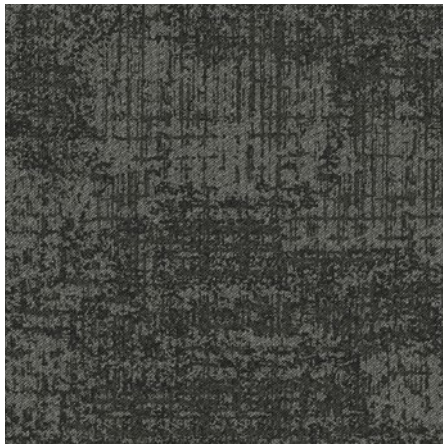


NETWORK // FIREWALL, ROUTER // ashtlar

# Network 24" x 24" MODULAR



STYLE 1842  
COLOR 2852  
firewall



STYLE 1842  
COLOR 2856  
router



PROPEL II // OUTPACE // herringbone  
(back cover) DOWNTOWN // BOURBON // quarter turn

# Propel II 24" x 24" MODULAR

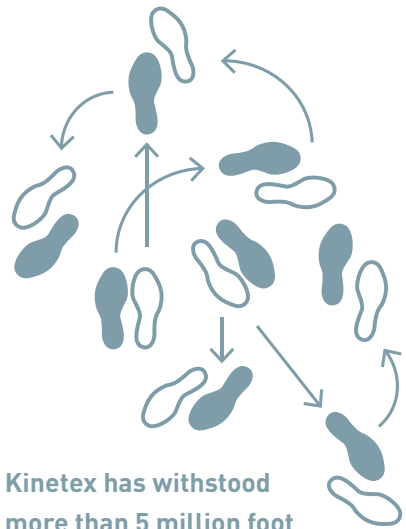


STYLE 1817  
COLOR 1708  
outpace



1. DURABILITY

Kinetex delivers enduring performance, year after year. One of the most thoroughly tested flooring products on the market, it has outstanding dimensional stability and unparalleled crush resistance.

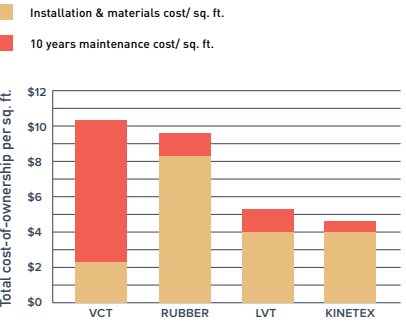


Kinetex has withstood more than 5 million foot traffic events.

2. MAINTENANCE

Tough to wear out, easy to maintain. With vacuuming and encapsulation cleaning, Kinetex looks like new, year after year. Thanks to a lightweight face construction, Kinetex retains less water than carpet and dries faster. It is easily sanitized and resists the most challenging staining agents.

Life Cycle Costs:  
INSTALLATION AND MAINTENANCE



3. MOISTURE TOLERANCE

The most common subfloor, concrete, can release excessive moisture and destroy floor covering systems—unless costly precautions are taken before installation. But moisture mitigation isn’t necessary with Kinetex; its breathable nature allows moisture to pass through its backing, instead of trapping it underneath. Kinetex textile composite flooring will perform in elevated RH slabs up to 100%.

**100%**  
RH TOLERANCE

**BREATHABLE**  
No trapped moisture.  
3rd party tested  
and verified.

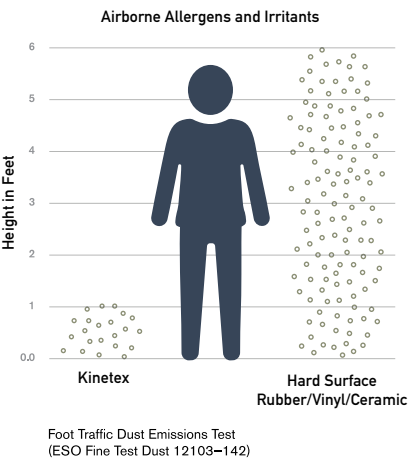
**NO VAPOR BARRIER  
REQUIRED-**  
regardless if the slab is new  
or old, regardless of  
hydrostatic pressure

**Thousands of installations  
worldwide since 2012.**  
NO MOISTURE-RELATED  
CLAIMS.

4. HEALTH

Kinetex minimizes air particulates that trigger allergies and cause infection. It easily surpasses California’s 01350 requirements— the most popular U.S. standard for evaluating and restricting VOC emissions indoors.

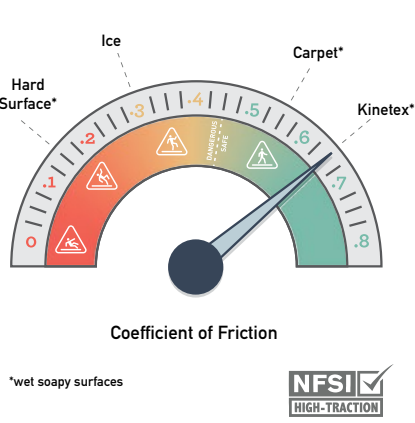
Easy Breathing



5. SAFETY

Kinetex is the only wall-to-wall textile floor covering certified as High-Traction by the National Floor Safety Institute. Its innovative construction creates one of the most slip-resistant flooring surfaces ever tested—wet or dry—to prevent falls before they happen.

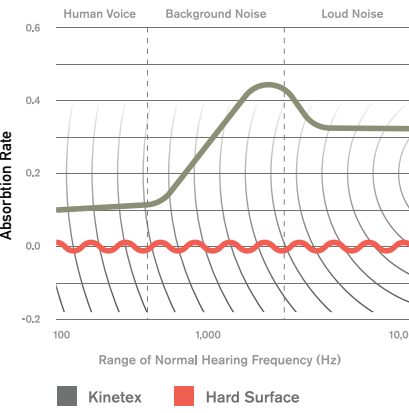
Gaining Traction



6. ACOUSTICS

Kinetex delivers unparalleled acoustic performance, with one of the highest Noise Reduction Coefficients (NRC) and Impact Insulation Classifications (IIC) ratings of any commercial flooring product.

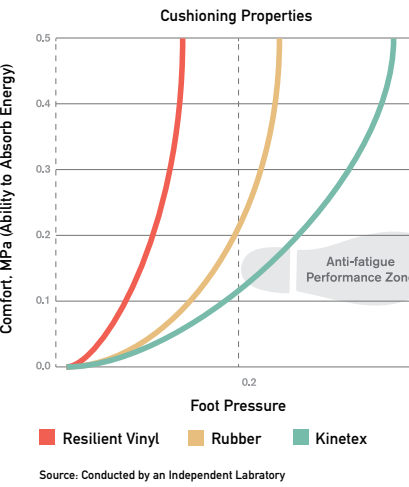
Keeping Quiet



7. COMFORT

Kinetex, a soft textile surface with a high-density backing, has exceptional anti-fatigue properties and minimal rolling resistance. Because it can absorb energy, Kinetex has the potential to reduce repetitive foot stress injuries and other injuries related to standing and frequent movement from place to place.

Step-by-Step Support



8. SUSTAINABILITY

Made with 45% post-consumer recycled content, each Kinetex tile contains the equivalent of 27 used water bottles. This dematerialized flooring product and its longer life mean that Kinetex has a much smaller environmental footprint than other commercial flooring options. Furthermore, Kinetex is NSF/ANSI-140 Platinum certified (the industry-leading standard for sustainability) and has a Red List Free DECLARE label.

Second Chances



Each Kinetex tile contains the equivalent of 27 plastic water bottles.

KINETEX INSTALLATION

Installing Kinetex is as easy as traditional modular carpet, however special attention should be applied until installers gain experience with module placement. Installers should perform site and material conditioning, surface preparation, and concrete pH and moisture testing as if they were installing J+J Flooring carpet modules. Because it is such a lightweight material the modules cut very easily, reducing installation time. Kinetex uses J+J Flooring’s proven adhesive systems with lifetime performance warranties.

Kinetex Adhesive

Kinetex Adhesive is formulated for Kinetex textile composite flooring products and is built to bond the textile composite to the properly prepared substrates for the life of the installation. Products with Kinetex Adhesive will perform in elevated RH slabs up to 100%.

PreFix® (optional)

PreFix includes a release liner that easily peels away to reveal pre-applied adhesive that securely anchors the Kinetex module in place. Products with PreFix will perform in elevated RH slabs up to 100%, allowing the flooring to be installed without costly moisture mitigation. PreFix offers a quick installation system and it can be added to all Kinetex products as an optional adhesive.

Please see the Kinetex installation instructions for full installation details.

TECHNOLOGIES

**High-Def Color Technology**  
J+J Flooring achieves next-generation innovation with the development of High-Def Color Technology. This latest engineering capability provides Kinetex products with crisp color, vibrant patterns and dimensional design that rivals that of soft surface flooring.



WARRANTIES			
We stand behind every aspect of Kinetex and extend certain lifetime warranties. Each warranty is covered for the useful life of the product, provided that installation and maintenance is in accordance with J+J Flooring’s Kinetex Installation instructions.			
Wear Layer Warranties			
Product Performance	Colorfastness to Light & Crocking	Stain Removal	Static Protection
Lifetime	Lifetime	Lifetime	Lifetime
Backing Warranties			
Protection from Edge Ravel	Protection from Delamination Failure	Dimensional Stability	
Lifetime	Lifetime	Lifetime	



©2023 J+J Flooring Group, LLC - This unique design is protected under the U.S. Copyright Act of 1976. Any unauthorized copying or duplication of this design constitutes copyright infringement in violation of federal law. Due to the unique visual characteristics of modular carpets, pattern repeats and pattern run-off seams may appear more noticeable than in broadloom carpets. Such visual characteristics do not constitute a manufacturing defect, and as such, should be considered when selecting modular carpet and its installation.

These photographs are representations of the installation for this modular product. Your modular installation may look different than these photos depending upon individual tile placement, lighting, and overall space layout, including furnishings. Final tile placement and the resulting visual is thus the customer’s, and not J+J Flooring’s responsibility.

\*NRC rating is a measure of the effectiveness of a material in absorbing sound. The higher the NRC rating, the greater the ability of the flooring product to absorb airborne noise. Independent laboratory testing of Kinetex has shown an average NRC rating of 0.30 (bare concrete flooring will typically provide a NRC Rating of 0.015).

\*\*IIC is a rating of the insulation from impact noise. The higher the IIC rating, the greater the sound insulation. Independent laboratory testing of Kinetex has shown an average IIC Rating of .64 (bare concrete flooring will typically provide an IIC Rating of 34) NOTE: Test results and testing laboratory will vary, and the above information is not guaranteed.

STYLE	against the grain 1840 modular	catalyst 1841 modular	downtown 1850 modular	network 1842 modular	propel 1817 modular
PHYSICAL CHARACTERISTICS					
WEAR LAYER	polyester-applied pattern (with High-Def Color Technology)	polyester-applied pattern (with High-Def Color Technology)	polyester-applied pattern (with High-Def Color Technology)	polyester-applied pattern (with High-Def Color Technology)	100% solution dyed polyester
BACKING	polyester felt cushion	polyester felt cushion	polyester felt cushion	polyester felt cushion	polyester felt cushion
TOTAL WEIGHT (nominal average)	4.5 oz - 5.2 oz/square foot	4.5 oz - 5.2 oz/square foot	4.5 oz - 5.2 oz/square foot	4.5 oz - 5.2 oz/square foot	4.5 oz - 5.2 oz/square foot
TOTAL THICKNESS (nominal average)	0.205 inches	0.205 inches	0.205 inches	0.205 inches	0.205 inches
DIMENSIONS	12 x 48 inch modules	24 x 24 inch modules	24 x 24 inch modules	24 x 24 inch modules 12 x 48 inch modules	24 x 24 inch modules 12 x 48 inch modules 18 x 36 inch modules
PACKAGING	18 modules per box – 72 square feet	18 modules per box – 72 square feet	18 modules per box – 72 square feet	18 modules per box – 72 square feet	18 modules per box – 72 square feet
ENVIRONMENTAL ATTRIBUTES					
RECYCLED CONTENT	45% post-consumer	45% post-consumer	45% post-consumer	45% post-consumer	45% post-consumer
LEED SCORECARD	IEQ 4.1 and IEQ 4.3	IEQ 4.1 and IEQ 4.3	IEQ 4.1 and IEQ 4.3	IEQ 4.1 and IEQ 4.3	IEQ 4.1 and IEQ 4.3
TESTING					
FLOORING RADIANT PANEL	class 1	class 1	class 1	class 1	class 1
SMOKE DENSITY	less than 450 (flaming & non-flaming)	less than 450 (flaming & non-flaming)	less than 450 (flaming & non-flaming)	less than 450 (flaming & non-flaming)	less than 450 (flaming & non-flaming)
ELECTROSTATIC PROPENSITY	less than 3.0 kv	less than 3.0 kv	less than 3.0 kv	less than 3.0 kv	less than 3.0 kv
COLORFASTNESS TO LIGHT	rating of 4.0 or greater	rating of 4.0 or greater	rating of 4.0 or greater	rating of 4.0 or greater	rating of 4.0 or greater
COLORFASTNESS TO CROCKING	rating of 4.0 or greater	rating of 4.0 or greater	rating of 4.0 or greater	rating of 4.0 or greater	rating of 4.0 or greater
WATER REPELLENCY	rating of 4.0 or greater	rating of 4.0 or greater	rating of 4.0 or greater	rating of 4.0 or greater	rating of 4.0 or greater
APPEARANCE RETENTION	4.0 or greater	4.0 or greater	4.0 or greater	4.0 or greater	4.0 or greater
SLIP RESISTANCE	Complies with ADA Guidelines for level surface NFSI Certified High-Traction	Complies with ADA Guidelines for level surface NFSI Certified High-Traction	Complies with ADA Guidelines for level surface NFSI Certified High-Traction	Complies with ADA Guidelines for level surface NFSI Certified High-Traction	Complies with ADA Guidelines for level surface NFSI Certified High-Traction
THERMAL INSULATION	0.73	0.73	0.73	0.73	0.73
NOISE REDUCTION COEFFICIENT	NRC Rating: 0.30*	NRC Rating: 0.30*	NRC Rating: 0.30*	NRC Rating: 0.30*	NRC Rating: 0.30*
IMPACT INSULATION CLASSIFICATION	IIC Rating: 64**	IIC Rating: 64**	IIC Rating: 64**	IIC Rating: 64**	IIC Rating: 64**
STAIN RESISTANCE	resists most challenging stains	resists most challenging stains	resists most challenging stains	resists most challenging stains	resists most challenging stains
INDOOR AIR QUALITY CERTIFICATION	CRI Green Label Plus™	CRI Green Label Plus™	CRI Green Label Plus™	CRI Green Label Plus™	CRI Green Label Plus™
ADHESIVE					
	Kinetex adhesive (full-spread pressure-sensitive)  (optional) PreFix® pre-applied releasable adhesive	Kinetex adhesive (full-spread pressure-sensitive)  (optional) PreFix® pre-applied releasable adhesive	Kinetex adhesive (full-spread pressure-sensitive)  (optional) PreFix® pre-applied releasable adhesive	Kinetex adhesive (full-spread pressure-sensitive)  (optional) PreFix® pre-applied releasable adhesive	Kinetex adhesive (full-spread pressure-sensitive)  (optional) PreFix® pre-applied releasable adhesive
INSTALLATION METHODS					
	ashlar basketweave herringbone parquet	ashlar brick quarter turn	ashlar brick monolithic quarter turn	24” x 24”: ashlar brick quarter turn	24” x 24”: quarter turn



kinetex

QUICK SHIP



P.O. BOX 2207

DALTON, GA 30722

P 800 241 4586

F 706 275 4433

JJFLOORING.COM

carpet | lvt | kinetex



**FLOORING**  
A DIVISION OF ENGINEERED FLOORS