

MODULAR + BROADLOOM

QUICK SHIP OPTIONS

LANDFORMS COLLECTION

Mesa Valley



FLOORING

LANDFORMS COLLECTION

Mesa Valley



INSPIRATION

Nature provides its own catch-your-breath inspiration from its vast expanse of majestic landforms of rolling hills, grassy plains and carved-out terrain. Wind and erosion bestow these formations with a divergent character, artfully layering contrasting textures- rough alongside smooth- creating an intriguing mix of oblique silhouetted patterns. The Landforms Collection pays tribute to nature’s artistry with two organic patterns, Mesa and Valley - contrasting patterns of beautiful muted, filtered light colorations that strike a relaxed, harmonious balance for contemporary interiors.



[cover] MESA // HILLS // VALLEY // HILLS // ashlar
[right] VALLEY // HILLS // ashlar



MESA // CANYON // brick



MESA // CANYON // monolithic



VALLEY // CANYON // brick





COORDINATES

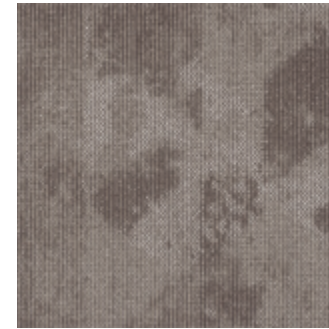
Beyond the beauty of individual products, our flooring coordinates effortlessly across all of our product platforms - modular carpet tile, broadloom, LVT and Kinetex textile composite flooring. This offering enables you to blend a range of designs with tonal simplicity to create palettes that reflect the demands of each unique space.

- 1. AGAINST THE GRAIN // 1840 // #2825 Millet // Kinetex
- 2. BOUCLÉ // 7081, 3081 // #2706 Strand // Modular + Broadloom
- 3. METAMORPHIC // 7717 // #2960 Feldspar // Modular
- 4. OVERTURE // N9133 // #3325 Aria // Broadloom
- 5. PROVISION // 1831 // #2277 Procurement // Kinetex
- 6. MESA // 7500 // #3476 Desert // Modular

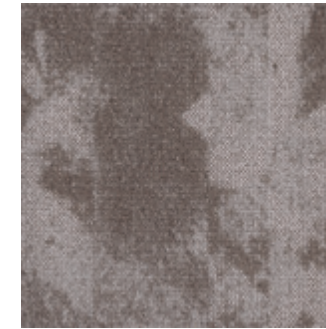
- 7. COLOR ZONE // 7479 // #3222 Carbon // Modular
- 8. VALLEY // 7501, 6501 // #3476 Desert // Modular + Broadloom
- 9. POWER PLAY // V5020, V5019 // #1083 Information // LVT
- 10. SCHEMATIC // 7091 // #2111 Increment // Modular
- 11. SIGNATURE // V5018 // #1060 Inheritance // LVT
- 12. OBSIDIAN // 7718 // #2960 Feldspar // Modular



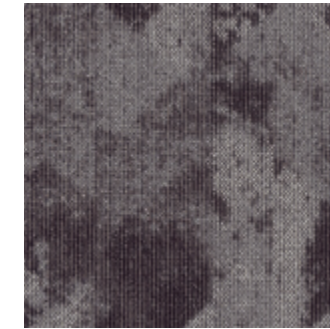
Mesa 24"x24" MODULAR



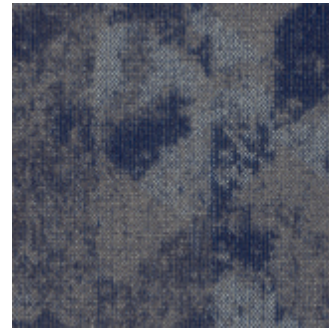
COLOR 3476
desert



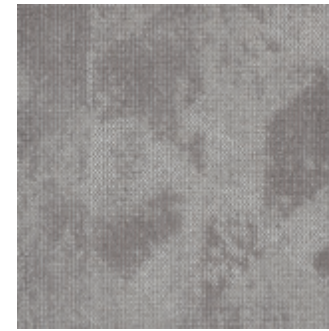
QUICK SHIP
COLOR 3478
basin



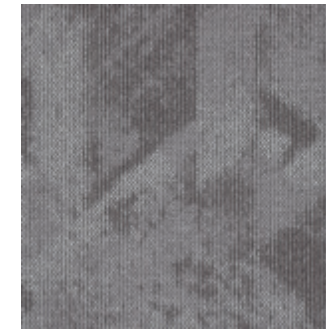
QUICK SHIP
COLOR 3474
canyon



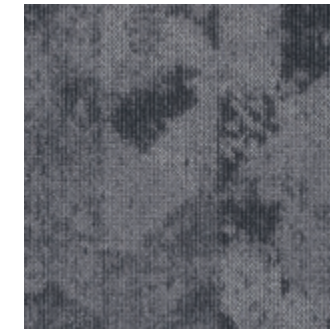
COLOR 3479
peak



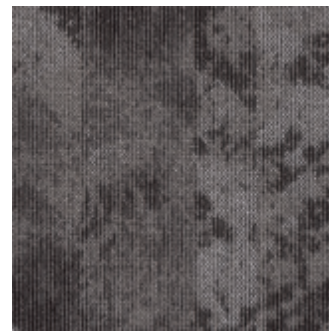
COLOR 3477
plains



QUICK SHIP
COLOR 3472
ridge



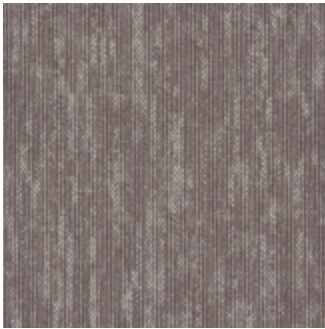
QUICK SHIP
COLOR 3475
hills



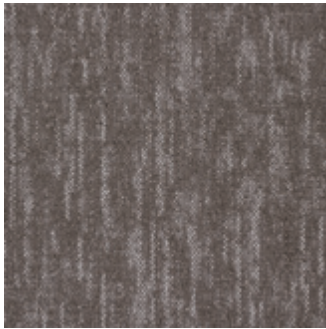
COLOR 3473
ravine

Valley

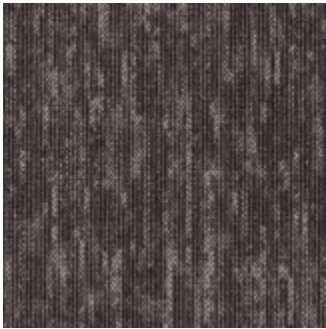
24"x24" MODULAR + BROADLOOM



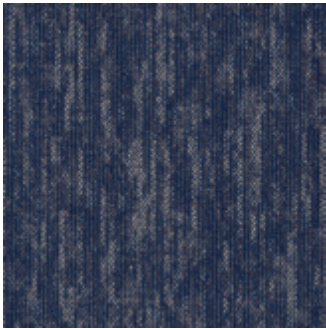
COLOR 3476
desert



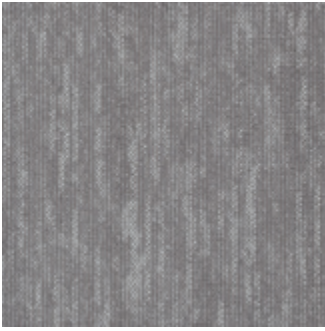
QUICK SHIP
COLOR 3478
basin



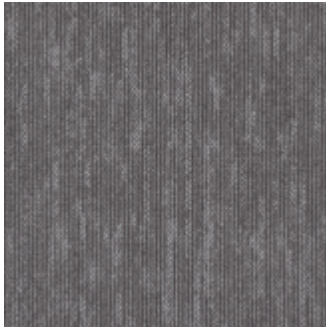
QUICK SHIP
COLOR 3474
canyon



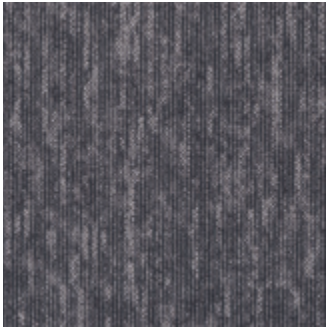
COLOR 3479
peak



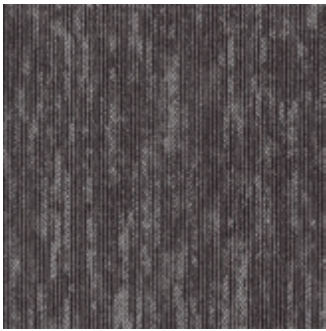
COLOR 3477
plains



QUICK SHIP
COLOR 3472
ridge



QUICK SHIP
COLOR 3475
hills



COLOR 3473
ravine



[above] VALLEY // HILLS // monolithic
[back cover] MESA // CANYON // brick

FIBER

Encore® SD Ultima® Nylon
(with recycled content) is specifically engineered to maximize appearance retention with exceptional color, performance, sustainability, and practicality.

BACKINGS

Nexus® Modular products can be installed in a variety of ways and are performance engineered to be visually appealing. In addition, they are designed to accommodate your long-term flooring budget.

- » Manufactured in an ISO 14001 certified facility
- » Contains pre-consumer recycled content and contributes to LEED
- » Recyclable through the J+J Flooring’s R4 Carpet Reclamation Program

PremierBac® Plus is standard on broadloom products and provides superior construction to ensure solid dimensional stability for broadloom carpets.

- » Stretch-in or glue-down installation
- » Manufactured in an ISO 14001 certified facility
- » Contains pre-consumer recycled content and contributes to LEED
- » Recyclable through the J+J Flooring’s R4 Carpet
- » Reclamation Program

ADHESIVE

Commercialon® Premium Carpet Adhesive
is formulated for the most demanding interior carpet installations. It forms a powerful bond with stiff and heavy backed commercial carpets directly over approved substrates. It is quick setting, features antimicrobial protection and can be removed easily. This solvent free adhesive is also low in odor, meeting the low VOC emission criteria of the CRI Green Label Plus Indoor Air Quality. Commercialon Premium Adhesive is for use with broadloom PremierBac® Plus and Endure®Plus backing systems.

Commercialon® Premium Modular Adhesive
A high strength acrylic latex-based carpet adhesive specifically formulated for bonding modular PVC backed carpet to the floor. This premium adhesive is for use with all Nexus Modular Tile products. This adhesive is guaranteed for the life of the installation when used in accordance with the J+J Flooring Carpet Installation Handbook. Commercialon Premium Modular Adhesive meets the CRI Low-VOC Emission Criteria, CRI ID# PSA-425402. Commercialon Premium Modular Adhesive is non toxic, has ultra-low odor and is antimicrobial in the dry state.

OPTIONAL:
Commercialon® High Moisture Adhesive
TileTabs - High Tack Adhesive Tabs (modular only)

MOISTURE

Are high levels of moisture in your concrete slab causing issues with your project’s floor covering? We can help.

- » Nexus® Modular Carpet with TileTabs – 99% RH
- » Cost-efficient
- » Long-term performance
- » Straightforward, easy-to-understand warranty
- » Requires no special floor preparation

TECHNOLOGIES

ProTex® Anti-Soil Treatment
ProTex is a proprietary anti-soil treatment technology that is applied and bonded to the pile fiber to impede soiling and to improve cleanability. It is standard on all J+J Flooring products.

OPTIONAL:
ProSept® Antimicrobial
Sentir® Advanced Odor-Blocking Technology

STYLE	Mesa 7500 Modular	Valley 7501 Modular	Valley 6501 Broadloom
CONSTRUCTION	patterned loop	patterned loop	patterned loop
FIBER TYPE	100% Encore® SD Ultima® nylon	100% Encore® SD Ultima® nylon	100% Encore® SD Ultima® nylon
DYE METHOD	solution dyed	solution dyed	solution dyed
OUNCE WEIGHT	18.0 oz./sy(610 grams/m2)	18.0 oz./sy(610 grams/m2)	18.0 oz./sy(610 grams/m2)
GAUGE	1/12 (4.72 rows/cm)	1/12 (4.72 rows/cm)	1/12 (4.72 rows/cm)
BACKING	Nexus® modular	Nexus® modular	PremierBac® Plus
SIZE	24” x 24” (61.0 cm x 61.0 cm)	24” x 24” (61.0 cm x 61.0 cm)	12 feet (3.66 m)
PATTERN REPEAT	n/a	n/a	24” x 24 ’ (60.96 cm x 60.96cm)
TOTAL THICKNESS (nominal average)	0.187 inches (0.48 cm)	0.187 inches (0.48 cm)	0.187 inches (0.48 cm)
SPECIAL TECHNOLOGY	ProTex® anti-soil treatment	ProTex® anti-soil treatment	ProTex® anti-soil treatment
OPTIONAL SPECIAL TECHNOLOGIES	Sentir® advanced odor blocking treatment ProSept® antimicrobial	Sentir® advanced odor blocking treatment ProSept® antimicrobial	Sentir® advanced odor blocking treatment ProSept® antimicrobial
PHYSICAL TESTING	flooring radiant panel (class 1) pill test – (passes) smoke density (less than 450 flaming) static generation (less than 3.5 kv) ADA compliance (compliant for accessible routes)	flooring radiant panel (class 1) pill test – (passes) smoke density (less than 450 flaming) static generation (less than 3.5 kv) ADA compliance (compliant for accessible routes)	flooring radiant panel (class 1) pill test – (passes) smoke density (less than 450 flaming) static generation (less than 3.5 kv) ADA compliance (compliant for accessible routes)
FIBER WARRANTIES	lifetime fiber performance for wear lifetime fiber performance for static lifetime stain removal lifetime colorfastness to light and atmospheric contaminants	lifetime fiber performance for wear lifetime fiber performance for static lifetime stain removal lifetime colorfastness to light and atmospheric contaminants	lifetime fiber performance for wear lifetime fiber performance for static lifetime stain removal lifetime colorfastness to light and atmospheric contaminants
BACKING WARRANTIES	lifetime for tuft bind strength (edge ravel, yarn pulls, zippering) lifetime against delamination lifetime dimensional stability	lifetime for tuft bind strength (edge ravel, yarn pulls, zippering) lifetime against delamination lifetime dimensional stability	10 year for tuft bind strength (edge ravel, yarn pulls, zippering) 10 year against delamination

MODULAR INSTALLATION METHODS



ashlar



brick

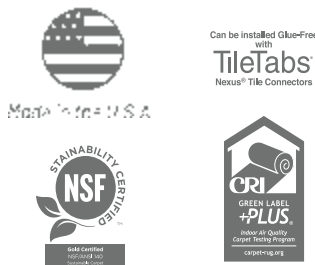


monolithic



quarter turn

STRAIGHT-FORWARD WARRANTIES					
Warranty: Installed with TileTabs	Warranty: Installed with Commercialon® Premium Adhesive and Commercialon® High Moisture Adhesive (non-prorated)	Warranty: Installed with any other adhesive	Max RH, pH: Installed without Commercialon® Premium Sealer	Max RH, pH: Installed with Commercialon® Premium Sealer	Max RH, pH: Installed with Commercialon® High Moisture Adhesive
Lifetime	Lifetime	1 Year	90% RH, pH 9	99% RH, pH 11 (TileTabs) 97% RH, pH 11 (Commercialon® Adhesive)	99% RH, pH12



©2022 J+J Flooring Group, LLC - This unique design is protected under the U.S. Copyright Act of 1976. Any unauthorized copying or duplication of this design constitutes copyright infringement in violation of federal law. Due to the unique visual characteristics of modular carpets, pattern repeats and pattern run-off seams may appear more noticeable than in broadloom carpets. Such visual characteristics do not constitute a manufacturing defect, and as such, should be considered when selecting modular carpet and its installation.

These photographs are representations of the installation for this modular product. Your modular installation may look different than these photos depending upon individual tile placement, lighting, and overall space layout, including furnishings. Final tile placement and the resulting visual is thus the customer’s, and not J+J Flooring’s responsibility.

MODULAR + BROADLOOM

QUICK SHIP OPTIONS



P.O. BOX 2207

DALTON, GA 30722

P 800 241 4586

F 706 275 4433

JJFLOORING.COM

OX0322M10

carpet | lvt | kinetex



FLOORING
A DIVISION OF ENGINEERED FLOORS