

kinetex

24" x 24" MODULAR

MIRROR IMAGE COLLECTION

# Carbon Copy Reflections Parallels Renewal



FLOORING



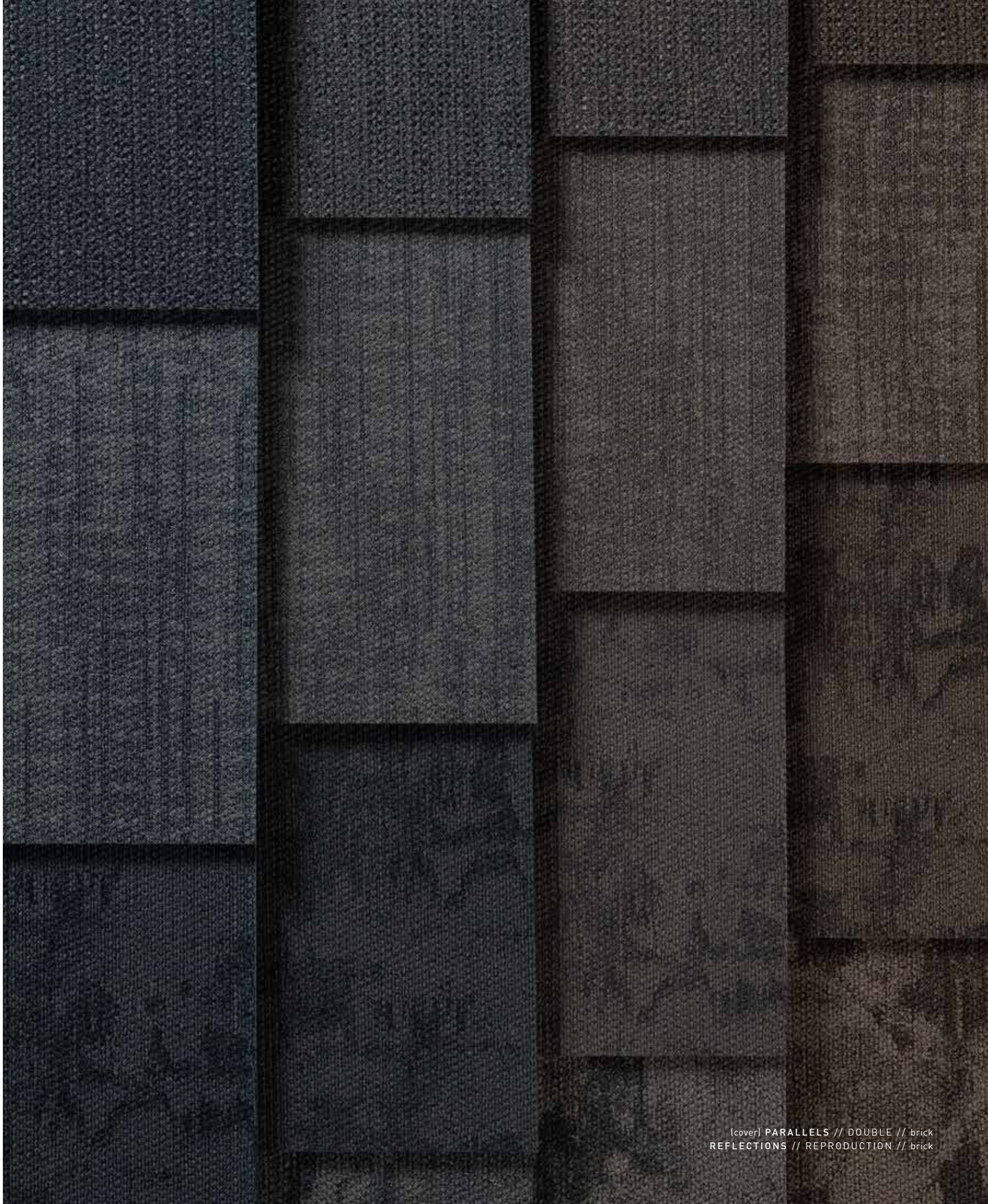
MIRROR IMAGE COLLECTION

Carbon Copy, Reflections, Parallels, Renewal



INSPIRATION

Texture has the power to provide essential balance by influencing the mood and dynamic of a room. Where we add visual texture, we alter perception. The Mirror Image Collection utilizes High-Def Color Technology™ to reflect the appearance of familiar textile visuals, while still delivering all the unique benefits of Kinetex. The collection is made up of four styles: Carbon Copy's loosely defined linear pattern renders visual texture. Reflections emulates a traditional densely tufted woven fabric. Parallels offers the look of a multi-loop textile with tone-on-tone neutrals. Renewal mimics an organic motif against a tonal woven background. Each of the styles in the Mirror Image Collection offer four classic neutral shades that are the perfect backdrop for a variety of spaces.



[cover] PARALLELS // DOUBLE // brick  
REFLECTIONS // REPRODUCTION // brick





PARALLELS // DOUBLE // brick





CARBON COPY // GENERATION // brick









REFLECTIONS // CLONE // quarter turn





REFLECTIONS // CLONE // quarter turn





RENEWAL // STAND-IN // brick





RENEWAL // STAND-IN // ashtar



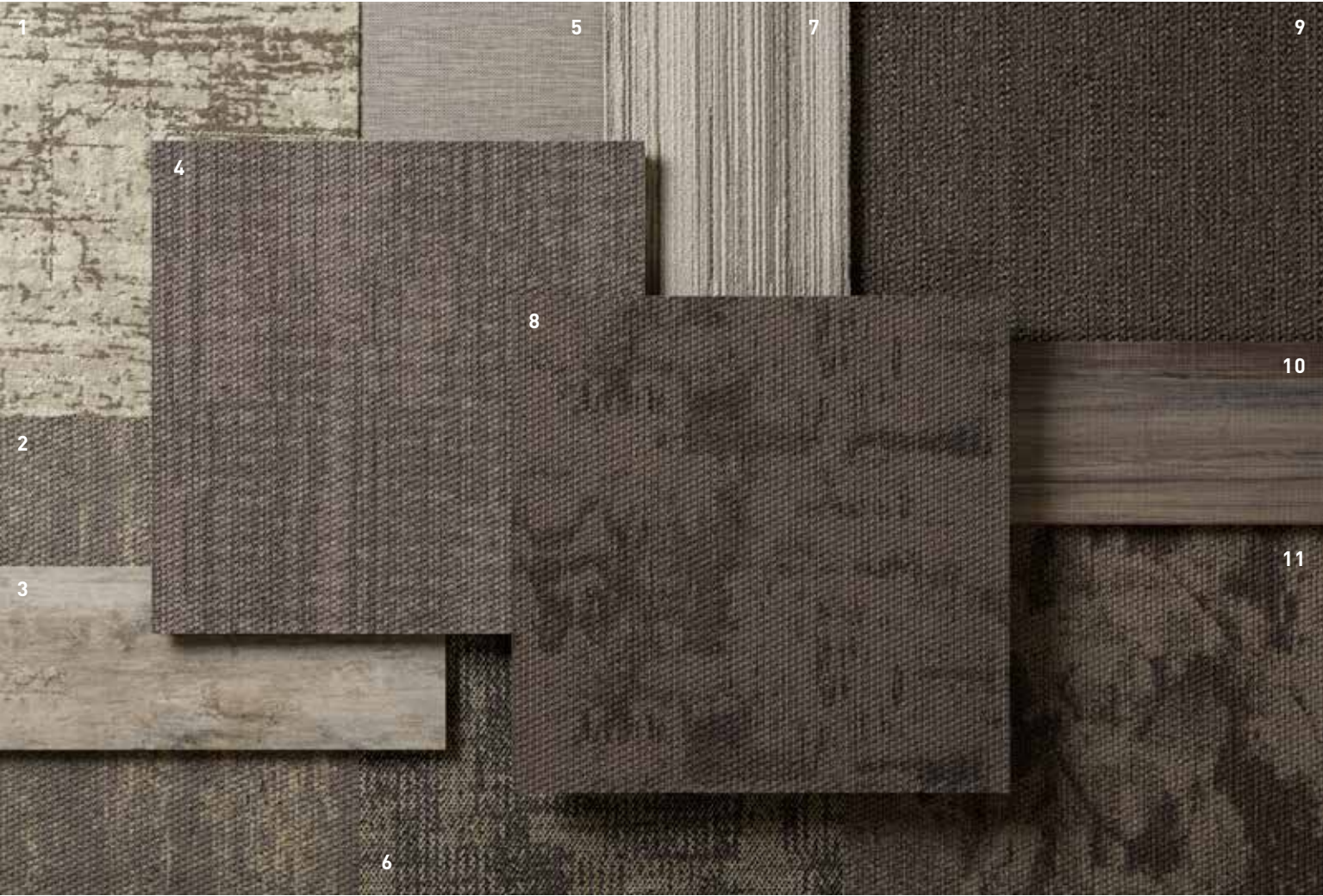


### COORDINATES

Beyond the beauty of individual products, our flooring coordinates effortlessly across all of our product platforms - modular carpet tile, broadloom, LVT and Kinetex textile composite flooring.

1. RENEWAL // 1857 // #3517 Stand-In // Kinetex
2. URBAN AVENUE // 1843 // #1560 Zone // Kinetex
3. POWER PLAY // V5020 & V5019 // #1083 Information // LVT
4. CARBON COPY // 1854 // #3409 Duplicate // Kinetex
5. REFLECTIONS // 1855 // #3509 Replica // Kinetex
6. NARRATIVE II // 7084 // #2998 Epilogue // Modular
7. APERTURE II // 7770 + 9770 // #3110 Burst // Modular + Broadloom
8. PARALLELS // 1856 // #3513 Counterpart // Kinetex
9. TATAMI // V5003 // #1023 Zen // LVT
10. REVERIE // 7684 // #2618 Wonder // Modular





COORDINATES

- 1. APERTURE II // 7770 + 9770 // #2255 Warm Toned // Modular + Broadloom
- 2. MAJOR METRO // 1853 // #3401 Poised // Kinetex
- 3. POWER PLAY // V5020 + V5019 // #1083 Information // LVT
- 4. CARBON COPY // 1854 // #3406 Photocopy // Kinetex
- 5. TATAMI // V5003 // #1021 Goza // LVT
- 6. INTRINSIC // 7096 // #2717 Authentic // Modular
- 7. STRIA // 7585 // #2742 Pima // Modular
- 8. REFLECTIONS // 1855 // #3508 Clone // Kinetex
- 9. PARALLELS // 1856 // #3512 Twin // Kinetex
- 10. FUSION // V5006 // #1051 Blend // LVT
- 11. RENEWAL // 1857 // #3516 Likeness // Kinetex



PARALLELS // TWIN // ashlar  
REFLECTIONS // CLONE // quarter turn  
{back cover} CARBON COPY // PHOTOCOPY // brick



# Mirror Image Collection

24" x 24" MODULAR



1854 carbon copy  
3406 photocopy



1855 reflections  
3508 clone



1854 carbon copy  
3407 generation



1855 reflections  
3511 image



1854 carbon copy  
3408 dead ringer



1855 reflections  
3510 reproduction



1854 carbon copy  
3409 duplicate



1855 reflections  
3509 replica



1856 parallels  
3512 twin



1857 renewal  
3516 likeness



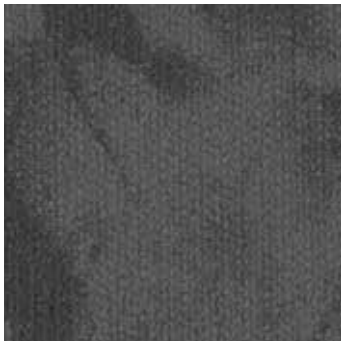
1856 parallels  
3515 equal



1857 renewal  
3519 dual



1856 parallels  
3514 double



1857 renewal  
3518 microform



1856 parallels  
3513 counterpart

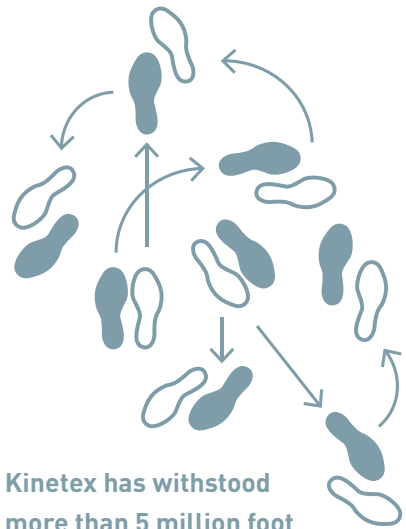


1857 renewal  
3517 stand-in



1. DURABILITY

Kinetex delivers enduring performance, year after year. One of the most thoroughly tested flooring products on the market, it has outstanding dimensional stability and unparalleled crush resistance.

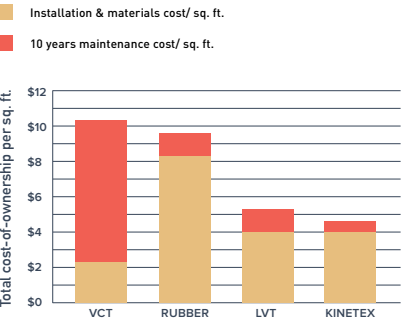


Kinetex has withstood more than 5 million foot traffic events.

2. MAINTENANCE

Tough to wear out, easy to maintain. With vacuuming and encapsulation cleaning, Kinetex looks like new, year after year. Thanks to a lightweight face construction, Kinetex retains less water than carpet and dries faster. It is easily sanitized and resists the most challenging staining agents.

Life Cycle Costs:  
INSTALLATION AND MAINTENANCE



3. MOISTURE TOLERANCE

The most common subfloor, concrete, can release excessive moisture and destroy floor covering systems—unless costly precautions are taken before installation. But moisture mitigation isn’t necessary with Kinetex; its breathable nature allows moisture to pass through its backing, instead of trapping it underneath. Kinetex textile composite flooring will perform in elevated RH slabs up to 100%.

100%  
RH TOLERANCE

BREATHABLE  
No trapped moisture.  
3rd party tested  
and verified.

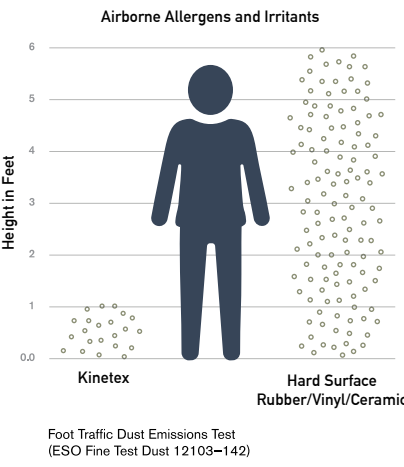
NO VAPOR BARRIER  
REQUIRED-  
regardless if the slab is new  
or old, regardless of  
hydrostatic pressure

Thousands of installations  
worldwide since 2012.  
NO MOISTURE-RELATED  
CLAIMS.

4. HEALTH

Kinetex minimizes air particulates that trigger allergies and cause infection. It easily surpasses California’s 01350 requirements— the most popular U.S. standard for evaluating and restricting VOC emissions indoors.

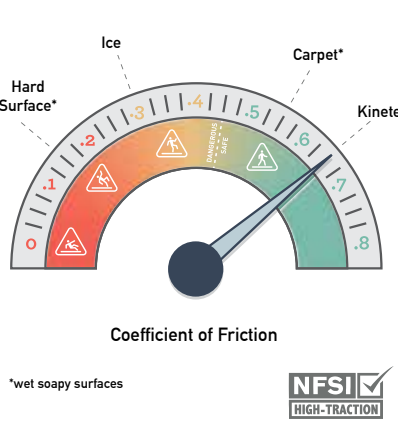
Easy Breathing



5. SAFETY

Kinetex is the only wall-to-wall textile floor covering certified as High-Traction by the National Floor Safety Institute. Its innovative construction creates one of the most slip-resistant flooring surfaces ever tested—wet or dry—to prevent falls before they happen.

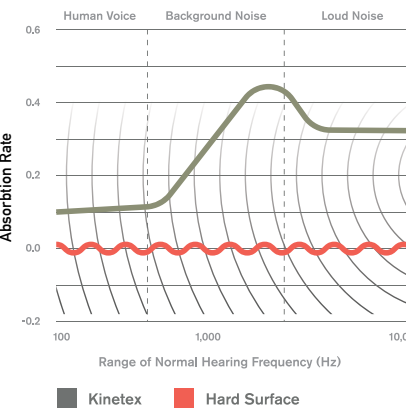
Gaining Traction



6. ACOUSTICS

Kinetex delivers unparalleled acoustic performance, with one of the highest Noise Reduction Coefficients (NRC) and Impact Insulation Classifications (IIC) ratings of any commercial flooring product.

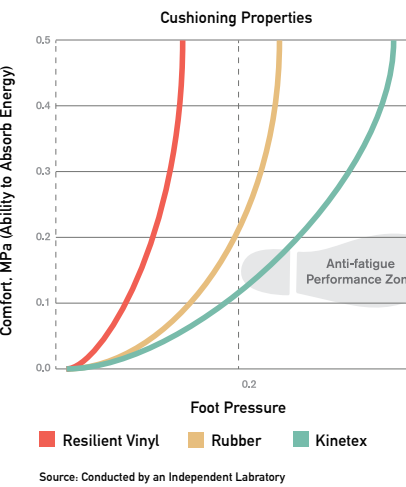
Keeping Quiet



7. COMFORT

Kinetex, a soft textile surface with a high-density backing, has exceptional anti-fatigue properties and minimal rolling resistance. Because it can absorb energy, Kinetex has the potential to reduce repetitive foot stress injuries and other injuries related to standing and frequent movement from place to place.

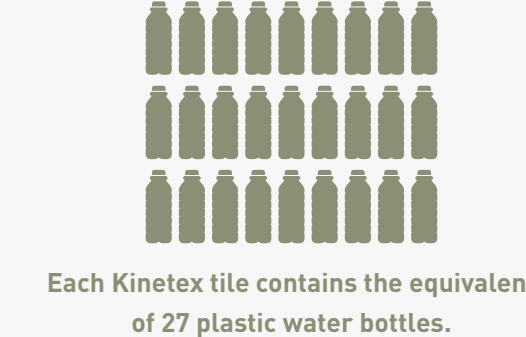
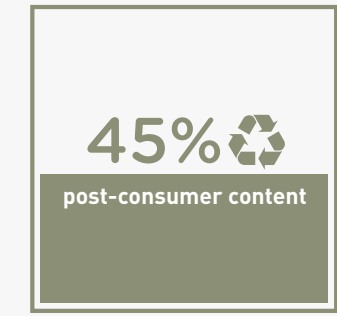
Step-by-Step Support



8. SUSTAINABILITY

Made with 45% post-consumer recycled content, each Kinetex tile contains the equivalent of 27 used water bottles. This dematerialized flooring product and its longer life mean that Kinetex has a much smaller environmental footprint than other commercial flooring options. Kinetex is NSF/ANSI-140 Platinum certified (the industry-leading standard for sustainability) and has a Red List Free DECLARE label. Furthermore, J+J Flooring has met the verification requirements for Carbon Neutral Products by purchasing offsets for 100% of its A1-A3 GWP values reported publicly in our 3rd Party Verified Environmental Production Declaration (EPD) for all annual production of Kinetex.

Second Chances



KINETEX INSTALLATION

Installing Kinetex is as easy as traditional modular carpet, however special attention should be applied until installers gain experience with module placement. Installers should perform site and material conditioning, surface preparation, and concrete pH and moisture testing as if they were installing J+J Flooring carpet modules. Because it is such a lightweight material the modules cut very easily, reducing installation time. Kinetex uses J+J Flooring’s proven adhesive systems with lifetime performance warranties.

Kinetex Adhesive

Kinetex Adhesive is formulated for Kinetex textile composite flooring products and is built to bond the textile composite to the properly prepared substrates for the life of the installation. Products with Kinetex Adhesive will perform in elevated RH slabs up to 100%.

PreFix® (optional)

PreFix includes a release liner that easily peels away to reveal pre-applied adhesive that securely anchors the Kinetex module in place. Products with PreFix will perform in elevated RH slabs up to 100%, allowing the flooring to be installed without costly moisture mitigation. PreFix offers a quick installation system and it can be added to all Kinetex products as an optional adhesive.

Please see the Kinetex installation instructions for full installation details.



TECHNOLOGIES

**High-Def Color Technology™**  
J+J Flooring achieves next-generation innovation with the development of High-Def Color Technology. This latest engineering capability provides Kinetex products with crisp color, vibrant patterns and dimensional design that rivals that of soft surface flooring.



WARRANTIES

We stand behind every aspect of Kinetex and extend certain lifetime warranties. Each warranty is covered for the useful life of the product, provided that installation and maintenance is in accordance with J+J Flooring’s Kinetex Installation instructions.

Wear Layer Warranties

Product Performance	Colorfastness to Light & Crocking	Stain Removal	Static Protection
Lifetime	Lifetime	Lifetime	Lifetime

Backing Warranties

Protection from Edge Ravel	Protection from Delamination Failure	Dimensional Stability
Lifetime	Lifetime	Lifetime



©2022 J+J Flooring Group, LLC - This unique design is protected under the U.S. Copyright Act of 1976. Any unauthorized copying or duplication of this design constitutes copyright infringement in violation of federal law. Due to the unique visual characteristics of modular carpets, pattern repeats and pattern run-off seams may appear more noticeable than in broadloom carpets. Such visual characteristics do not constitute a manufacturing defect, and as such, should be considered when selecting modular carpet and its installation.

These photographs are representations of the installation for this modular product. Your modular installation may look different than these photos depending upon individual tile placement, lighting, and overall space layout, including furnishings. Final tile placement and the resulting visual is thus the customer’s, and not J+J Flooring’s responsibility.

\*NRC rating is a measure of the effectiveness of a material in absorbing sound. The higher the NRC rating, the greater the ability of the flooring product to absorb airborne noise. Independent laboratory testing of Kinetex has shown an average NRC rating of 0.30 (bare concrete flooring will typically provide a NRC Rating of 0.015).

\*\*IIC is a rating of the insulation from impact noise. The higher the IIC rating, the greater the sound insulation. Independent laboratory testing of Kinetex has shown an average IIC Rating of .64 (bare concrete flooring will typically provide an IIC Rating of 34) NOTE: Test results and testing laboratory will vary, and the above information is not guaranteed.

STYLE	carbon copy 1854 modular	reflections 1855 modular	parallels 1856 modular	renewal 1857 modular
WEAR LAYER	solution dyed polyester - applied pattern (produced with High-Def Color Technology™)	solution dyed polyester - applied pattern (produced with High-Def Color Technology™)	solution dyed polyester - applied pattern (produced with High-Def Color Technology™)	solution dyed polyester - applied pattern (produced with High-Def Color Technology™)
BACKING	polyester felt cushion	polyester felt cushion	polyester felt cushion	polyester felt cushion
TOTAL WEIGHT (nominal average)	4.5 oz - 5.2 oz/square foot	4.5 oz - 5.2 oz/square foot	4.5 oz - 5.2 oz/square foot	4.5 oz - 5.2 oz/square foot
TOTAL THICKNESS (nominal average)	0.205 inches	0.205 inches	0.205 inches	0.205 inches
DIMENSIONS	24 x 24 inch modules	24 x 24 inch modules	24 x 24 inch modules	24 x 24 inch modules
PACKAGING	18 modules per box – 72 square feet	18 modules per box – 72 square feet	18 modules per box – 72 square feet	18 modules per box – 72 square feet

ENVIRONMENTAL ATTRIBUTES				
CARBON FOOTPRINT	carbon neutral	carbon neutral	carbon neutral	carbon neutral
RED LIST FREE	DECLARE label	DECLARE label	DECLARE label	DECLARE label
RECYCLED CONTENT	45% post-consumer	45% post-consumer	45% post-consumer	45% post-consumer
LEED SCORECARD	IEQ 4.1 and IEQ 4.3	IEQ 4.1 and IEQ 4.3	IEQ 4.1 and IEQ 4.3	IEQ 4.1 and IEQ 4.3
NSF/ANSI 140 CERTIFICATION	platinum	platinum	platinum	platinum

TESTING				
FLOORING RADIANT PANEL	class 1	class 1	class 1	class 1
SMOKE DENSITY	less than 450 (flaming & non-flaming)	less than 450 (flaming & non-flaming)	less than 450 (flaming & non-flaming)	less than 450 (flaming & non-flaming)
ELECTROSTATIC PROPENSITY	less than 3.0 kv	less than 3.0 kv	less than 3.0 kv	less than 3.0 kv
COLORFASTNESS TO LIGHT	rating of 4.0 or greater	rating of 4.0 or greater	rating of 4.0 or greater	rating of 4.0 or greater
COLORFASTNESS TO CROCKING	rating of 4.0 or greater	rating of 4.0 or greater	rating of 4.0 or greater	rating of 4.0 or greater
WATER REPELLENCY	rating of 4.0 or greater	rating of 4.0 or greater	rating of 4.0 or greater	rating of 4.0 or greater
APPEARANCE RETENTION	4.0 or greater	4.0 or greater	4.0 or greater	4.0 or greater
SLIP RESISTANCE	Complies with ADA Guidelines for level surface NFSI Certified High-Traction	Complies with ADA Guidelines for level surface NFSI Certified High-Traction	Complies with ADA Guidelines for level surface NFSI Certified High-Traction	Complies with ADA Guidelines for level surface NFSI Certified High-Traction
THERMAL INSULATION	0.73	0.73	0.73	0.73
NOISE REDUCTION COEFFICIENT	NRC Rating: 0.30*	NRC Rating: 0.30*	NRC Rating: 0.30*	NRC Rating: 0.30*
IMPACT INSULATION CLASSIFICATION	IIC Rating: 64**	IIC Rating: 64**	IIC Rating: 64**	IIC Rating: 64**
STAIN RESISTANCE	resists most challenging stains	resists most challenging stains	resists most challenging stains	resists most challenging stains
INDOOR AIR QUALITY CERTIFICATION	CRI Green Label Plus™	CRI Green Label Plus™	CRI Green Label Plus™	CRI Green Label Plus™

ADHESIVE	Kinetex adhesive (full-spread pressure-sensitive) (optional) PreFix® pre-applied releasable adhesive	Kinetex adhesive (full-spread pressure-sensitive) (optional) PreFix® pre-applied releasable adhesive	Kinetex adhesive (full-spread pressure-sensitive) (optional) PreFix® pre-applied releasable adhesive	Kinetex adhesive (full-spread pressure-sensitive) (optional) PreFix® pre-applied releasable adhesive
----------	---	---	---	---

INSTALLATION METHODS

ashlar

brick

1/4 turn



kinetex

24" x 24" MODULAR



P.O. BOX 2207

DALTON, GA 30722

P 800 241 4586

F 706 275 4433

JJFLOORING.COM

AX1122M04

carpet | lvt | kinetex



**FLOORING**  
A DIVISION OF ENGINEERED FLOORS