

BROADLOOM

QUICK SHIP

Mix III  
Merge III  
Fuse III



FLOORING

# Mix III / Merge III / Fuse III



## INSPIRATION

What makes timeless design? With its dimensional feel and subtle pattern movement, Mix III, Merge III and Fuse III were created to be a classic—beautiful balance of understated elegance and functional sensibility that will complement any design concept. Mix is a softly undulating textured pattern with clean lines of monochromatic neutrals—a perfect foundation to build beautiful spaces. Merge features a less structured pattern of irregular bands articulated by varying pile heights that will infuse a space with subtle texture. Fuse has a quiet mottled motif blending warm neutrals with contrasting darker tones that is versatile and adaptable. All three textured patterns share five timeless neutral colorways that are versatile and flexible and will easily coordinate with other finishes on interior spaces.



[cover] MIX III // LINK // broadloom  
[above] MERGE III // MINGLE // broadloom



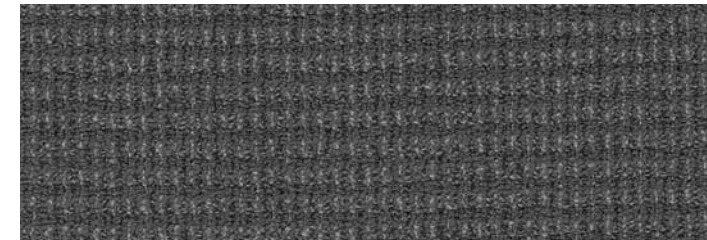
# Mix III BROADLOOM



**QUICK SHIP**  
COLOR 1450  
mingle



**QUICK SHIP**  
COLOR 1452  
blend



**QUICK SHIP**  
COLOR 1944  
link



**QUICK SHIP**  
COLOR 1945  
integrate



**QUICK SHIP**  
COLOR 1947  
connect

# Merge III BROADLOOM



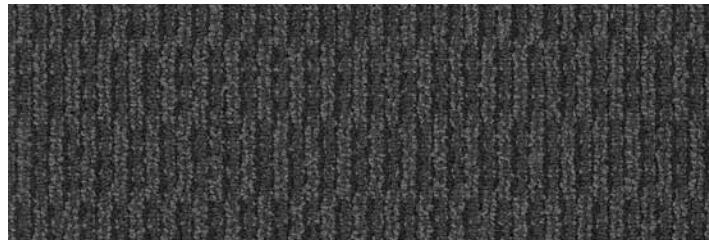
**QUICK SHIP**  
COLOR 1450  
mingle



**QUICK SHIP**  
COLOR 1452  
blend



**QUICK SHIP**  
COLOR 1944  
link



**QUICK SHIP**  
COLOR 1945  
integrate



**QUICK SHIP**  
COLOR 1947  
connect



**ALL COLORS AVAILABLE AS QUICK SHIP.** Orders up to 1,500 square yards (13,500 sq. ft.) ship within 10 days.

MERGE III // LINK // broadloom



# Fuse III BROADLOOM



**QUICK SHIP**  
COLOR 1450  
mingle



**QUICK SHIP**  
COLOR 1452  
blend



**QUICK SHIP**  
COLOR 1944  
link



**QUICK SHIP**  
COLOR 1945  
integrate



**QUICK SHIP**  
COLOR 1947  
connect

FIBER

**Encore® BCF Nylon with ColorLoc® Plus** is manufactured to offer exceptional color, performance and appearance retention. Carpet using Encore BCF nylon with ColorLoc Plus - our patented stain resistant technology - is engineered to resist permanent staining and is backed by Lifetime Performance Warranties for stain resistance, colorfastness, color transfer, water bleed, bleach resistance and wear.

**Encore® SD Ultima® (with recycled content)** is specifically engineered to maximize appearance retention with exceptional color, performance, sustainability and practicality.

BACKINGS

**PremierBac® Plus** is standard on broadloom products and provides superior construction to ensure solid dimensional stability for broadloom carpets.

- » Stretch-in or glue-down installation
- » Manufactured in an ISO 14001 certified facility
- » Contains pre-consumer recycled content and contributes to LEED
- » Recyclable through the J+J Flooring's R4 Carpet
- » Reclamation Program

ADHESIVE

**Commercialon® Premium Carpet Adhesive** is formulated for the most demanding interior carpet installations. It forms a powerful bond with stiff and heavy backed commercial carpets directly over approved substrates. It is quick setting, features antimicrobial protection and can be removed easily. This solvent free adhesive is also low in odor, meeting the low VOC emission criteria of the CRI Green Label Plus Indoor Air Quality. Commercialon Premium Adhesive is for use with broadloom PremierBac® Plus and Endure® Plus backing systems.

TECHNOLOGIES

**ProTex® Anti-Soil Treatment**

ProTex is a proprietary anti-soil treatment technology that is applied and bonded to the pile fiber to impede soiling and to improve cleanability. It is standard on all J+J Flooring products.

OPTIONAL:

**ProSept® Antimicrobial**

**Sentir® Advanced Odor-Blocking Technology**

STYLE	mix III 3512 broadloom	merge III 3522 broadloom	fuse III 3532 broadloom
CONSTRUCTION	patterned loop	patterned loop	patterned loop
FIBER TYPE	100% Encore BCF nylon	100% Encore® SD Ultima® nylon	100% Encore® SD Ultima® nylon
DYE METHOD	solution/yarn dyed	solution dyed	solution dyed
OUNCE WEIGHT	19.0 oz./sy(644 grams/m2)	19.0 oz./sy(644 grams/m2)	19.0 oz./sy(644 grams/m2)
GAUGE	1/10 (3.94 rows/cm)	1/10 (3.94 rows/cm)	1/10 (3.94 rows/cm)
PATTERN REPEAT	1/2" W x 3/4" L (1.27 cm W x 1.90 cm L)	7/8" W x 3.75" L (2.22 cm W x 9.53 cm L)	3/4" W x 2" L (1.90 cm W x 5.08 cm L)
TOTAL THICKNESS (nominal average)	0.28 inches (0.71 cm)	0.28 inches (0.71 cm)	0.28 inches (0.71 cm)
BACKING	PremierBac Plus	PremierBac Plus	PremierBac Plus
SPECIAL TECHNOLOGY	ProTex® anti-soil treatment	ProTex® anti-soil treatment	ProTex® anti-soil treatment
SIZE	12 feet (3.66 m)	12 feet (3.66 m)	12 feet (3.66 m)
PHYSICAL TESTING	flooring radiant panel (class 1) pill test – (passes) smoke density (less than 450 flaming) static generation -(less than 3.5 kv) ADA compliance (compliant for accessible routes)	flooring radiant panel (class 1) pill test – (passes) smoke density (less than 450 flaming) static generation -(less than 3.5 kv) ADA compliance (compliant for accessible routes)	flooring radiant panel (class 1) pill test – (passes) smoke density (less than 450 flaming) static generation -(less than 3.5 kv) ADA compliance (compliant for accessible routes)
WARRANTIES	lifetime fiber performance for wear lifetime fiber performance for static lifetime stain removal lifetime colorfastness to light and atmospheric contaminants 10 year for tuft bind strength (edge ravel, yarn pulls, zippering) 10 year against delamination	lifetime fiber performance for wear lifetime fiber performance for static lifetime stain removal lifetime colorfastness to light and atmospheric contaminants 10 year for tuft bind strength (edge ravel, yarn pulls, zippering) 10 year against delamination	lifetime fiber performance for wear lifetime fiber performance for static lifetime stain removal lifetime colorfastness to light and atmospheric contaminants 10 year for tuft bind strength (edge ravel, yarn pulls, zippering) 10 year against delamination

©2020 J+J Flooring Group, LLC - This unique design is protected under the U.S. Copyright Act of 1976. Any unauthorized copying or duplication of this design constitutes copyright infringement in violation of federal law. Due to the unique visual characteristics of modular carpets, pattern repeats and pattern run-off seams may appear more noticeable than in broadloom carpets. Such visual characteristics do not constitute a manufacturing defect, and as such, should be considered when selecting modular carpet and its installation.

These photographs are representations of the installation for this modular product. Your modular installation may look different than these photos depending upon individual tile placement, lighting, and overall space layout, including furnishings. Final tile placement and the resulting visual is thus the customer's, and not J+J Flooring's responsibility.



BROADLOOM

QUICK SHIP



P.O. BOX 2207  
DALTON, GA 30722  
P 800 241 4586  
F 706 275 4433  
JJFLOORING.COM

carpet | lvt | kinetex

 **FLOORING**  
A DIVISION OF ENGINEERED FLOORS