

# Obsidian



FLOORING



# Obsidian



## INSPIRATION

Few stones rival the powerful brilliance of the enigmatic obsidian. Its beauty and opulence has influenced artisans, culture, and even spirituality, for centuries. Inspired by its glass-like cuts and angles, Obsidian is a contrast of texture and geometry. The clean cutting lines allow shadows to fall in between, forming irregular geometric shapes. Obsidian is offered as a 24" x 24" carpet tile and is designed to effortlessly coordinate with its 24"x24" tile counterpart, Metamorphic. Both products offer luxurious multi-level loop patterning with uniquely textured yarns and diverse shade of color. This organic modern duo elevates any interior.



(cover) **OBSIDIAN** // LIMESTONE, LIMESTONE MOSS // ashlar  
(right) **OBSIDIAN** // SOAPSTONE // monolithic





OBSIDIAN // SOAPSTONE // monolithic





OBSIDIAN // FELDSPAR, FELDSPAR MARINE // ashlar





OBSIDIAN // FELDSPAR // METAMORPHIC // FELDSPAR // monolithic



OBSIDIAN // LIMESTONE // METAMORPHIC // LIMESTONE // monolithic





#### COORDINATES

Beyond the beauty of individual products, our flooring coordinates effortlessly across all of our product platforms - modular carpet tile, broadloom, LVT and Kinetex textile composite flooring. This offering enables you to blend a range of designs with tonal simplicity to create palettes that reflect the demands of each unique space.

- 1. **LEGEND** // V5009 // #1059 Fiction // LVT
- 2. **METAMORPHIC** // 7717 // #2960 Feldspar // Modular
- 3. **OBSIDIAN** // 7718 // #3279 Feldspar Marine // Modular
- 4. **NETWORK** // 1842 // #2857 Server // Kinetex
- 5. **CAMEO II** // 7949 // #2005 Shaft // Modular
- 6. **OBSIDIAN** // 7718 // #2960 Feldspar // Modular
- 7. **ORGANIC RAKU** // 7062 // #2344 Silica // Modular
- 8. **FRAMEWORK** // V5001 // #1014 Partition // LVT
- 9. **PROVISION** // 1831 // #2279 Essential // Kinetex





# Obsidian

24"x24" MODULAR



COLOR 2959  
limestone



COLOR 3278  
limestone moss



COLOR 2960  
feldspar



COLOR 3279  
feldspar marine



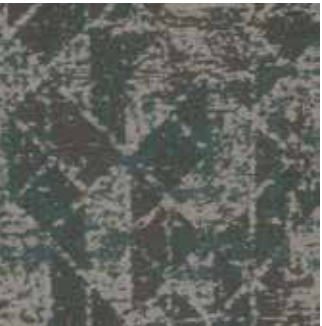
COLOR 2969  
sandstone



COLOR 3281  
sandstone copper



COLOR 2967  
shale



COLOR 3284  
shale ice



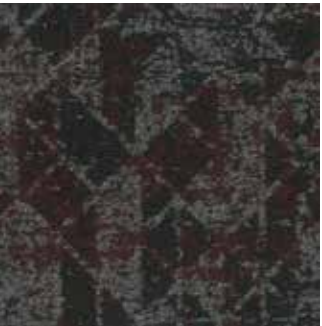
COLOR 2966  
marble



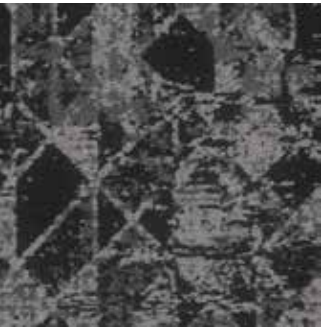
COLOR 3283  
marble gold



COLOR 2961  
soapstone



COLOR 3280  
soapstone maroon



COLOR 2965  
quartz



COLOR 3282  
quartz jade

OBSIDIAN // LIMESTONE MOSS // monolithic // MAKE YOUR MARK // SHADOW // 1/3 drop  
[back cover] OBSIDIAN // LIMESTONE, SOAPSTONE // monolithic



FIBER

**Encore® SD Ultima®** (with recycled content) is specifically engineered to maximize appearance retention with exceptional color, performance, sustainability and practicality.

BACKINGS

**Nexus® Modular** products can be installed in a variety of ways and are performance engineered to be visually appealing. In addition, they are designed to accommodate your long-term flooring budget.

- » Manufactured in an ISO 14001 certified facility
- » Contains pre-consumer recycled content and contributes to LEED
- » Recyclable through the J+J Flooring’s R4 Carpet Reclamation Program

ADHESIVE

**Commercialon® Premium Modular Adhesive**  
A high strength acrylic latex-based carpet adhesive specifically formulated for bonding modular PVC backed carpet to the floor. This premium adhesive is for use with all Nexus Modular Tile products. This adhesive is guaranteed for the lifetime of the installation when used in accordance with the J+J Flooring installation instructions. Commercialon® Premium Modular Adhesive meets the CRI Low-VOC Emission Criteria, CRI ID# PSA-425402. Commercialon® Premium Modular Adhesive is non toxic, has ultra-low odor and is antimicrobial in the dry state.

OPTIONAL:  
**TileTabs** - High Tack Adhesive Tabs (modular only)

MOISTURE

Are high levels of moisture in your concrete slab causing issues with your project’s floor covering? We can help.

- » Nexus® Modular Carpet with TileTabs – 99% RH
- » Cost-efficient
- » Long-term performance
- » Straightforward, easy-to-understand warranty
- » Requires no special floor preparation

TECHNOLOGIES

**ProTex® Anti-Soil Treatment**  
ProTex is a proprietary anti-soil treatment technology that is applied and bonded to the pile fiber to impede soiling and to improve cleanability. It is standard on all J+J Flooring products.

OPTIONAL:  
**ProSept® Antimicrobial**  
**Sentir® Advanced Odor-Blocking Technology**

STYLE

obsidian 7718 modular

CONSTRUCTION

textured patterned loop

FIBER TYPE

Encore SD® Ultima® Nylon

DYE METHOD

solution dyed

OUNCE WEIGHT

32.0 oz./sy (1085 grams/m2)

GAUGE

1/10 (3.94 rows/cm)

BACKING

Nexus® modular

SIZE

24” x 24” (61.0 cm X 61.0 cm)

PATTERN REPEAT

n/a

TOTAL THICKNESS (nominal average)

0.281 inches (0.714 cm)

SPECIAL TECHNOLOGY

ProTex® anti-soil treatment

OPTIONAL SPECIAL TECHNOLOGIES

ProSept® antimicrobial  
Sentir® advanced odor blocking treatment

PHYSICAL TESTING

flooring radiant panel (class 1)  
pill test – (passes)  
smoke density (less than 450 flaming)  
static generation -(less than 3.5 kv)  
ADA compliance (compliant for accessible routes)

WARRANTIES

lifetime fiber performance for wear  
lifetime fiber performance for static  
lifetime stain removal  
lifetime for tuft bind strength (edge ravel, yarn pulls, zippering)  
lifetime against delamination  
lifetime dimensional stability

MODULAR INSTALLATION METHODS



ashlar



brick



monolithic



quarter turn

STRAIGHT-FORWARD WARRANTIES

Warranty: Installed with TileTabs	Warranty: Installed with Commercialon® Premium Adhesive (non-prorated)	Warranty: Installed with any other adhesive	Max RH, pH: Installed without Commercialon® Premium Sealer	Max RH, pH: Installed with Commercialon® Premium Sealer
Lifetime	Lifetime	1 Year	90% RH, pH 9	99% RH, pH 11 (Tiletabs) 97% RH, pH 11 (Commercialon® Adhesive)

©2020 J+J Flooring Group, LLC - This unique design is protected under the U.S. Copyright Act of 1976. Any unauthorized copying or duplication of this design constitutes copyright infringement in violation of federal law. Due to the unique visual characteristics of modular carpets, pattern repeats and pattern run-off seams may appear more noticeable than in broadloom carpets. Such visual characteristics do not constitute a manufacturing defect, and as such, should be considered when selecting modular carpet and its installation.

These photographs are representations of the installation for this modular product. Your modular installation may look different than these photos depending upon individual tile placement, lighting, and overall space layout, including furnishings. Final tile placement and the resulting visual is thus the customer’s, and not J+J Flooring’s responsibility.





P.O. BOX 2207  
DALTON, GA 30722  
P 800 241 4586  
F 706 275 4433  
JJFLOORING.COM

carpet | lvt | kinetex