

MODULAR

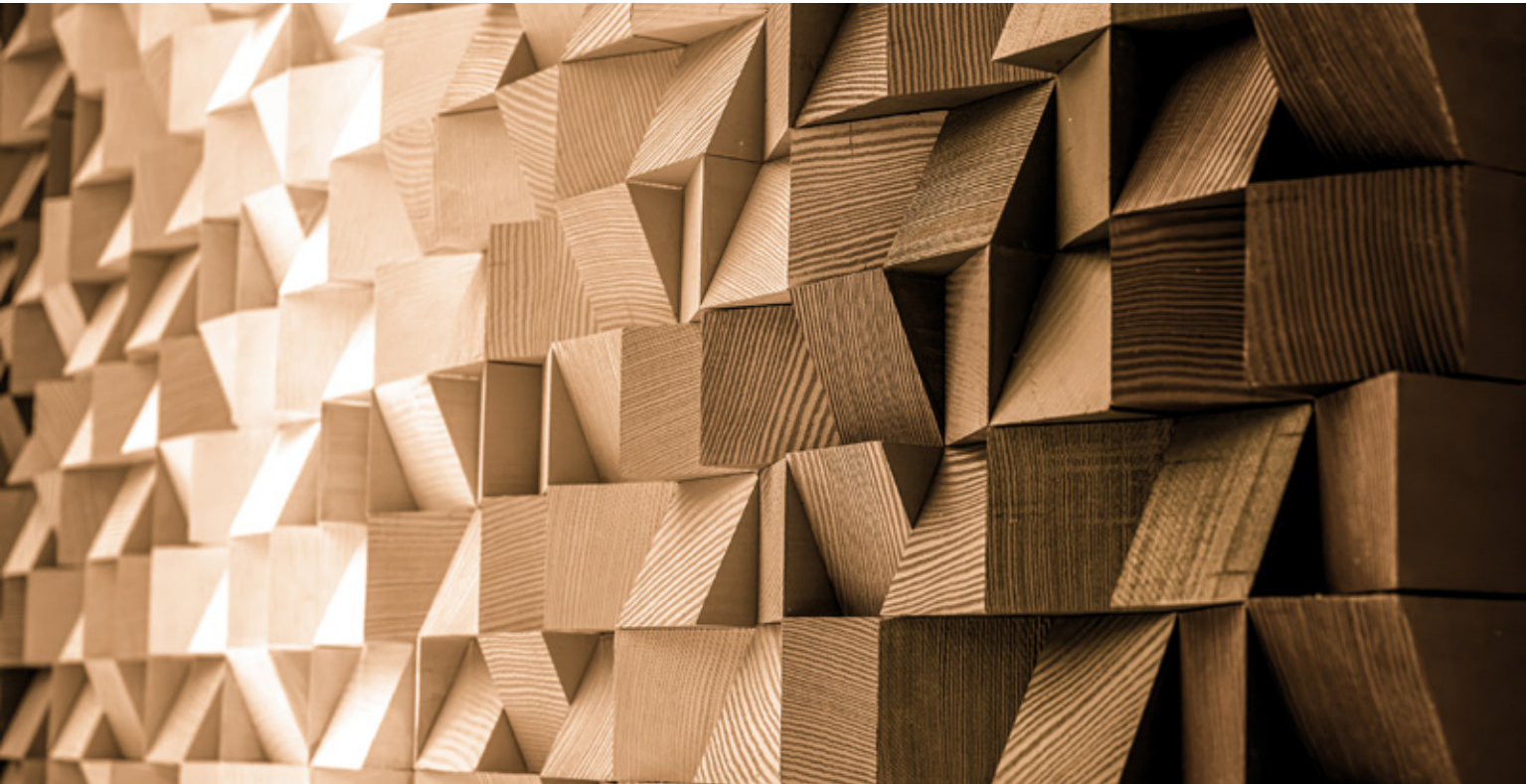
18" x 36" PLANK

Outfitter



FLOORING

Outfitter



INSPIRATION
Outfitter offers a contemporary twist on traditional style by balancing modern and rustic aesthetics. A fragmented geometric motif gently shifts over warm and earthy neutral colors across 18"x36" planks. Offered in twelve rich colorways, Outfitter creates a well-appointed space that is timeless, rich and welcoming.



(cover) OUTFITTER // JERSEY // FLOCKED// ashlar
(right) OUTFITTER // TWEED // ashlar



OUTFITTER // TWILL // basketweave // SEERSUCKER // parquet



OUTFITTER // FLOCKED// herringbone

Outfitter 18" x 36" PLANK



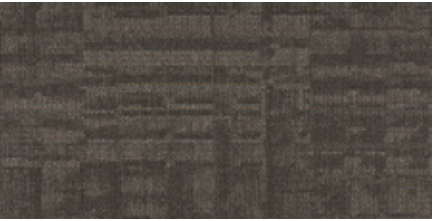
COLOR 2391
muslin



COLOR 2392
corduroy



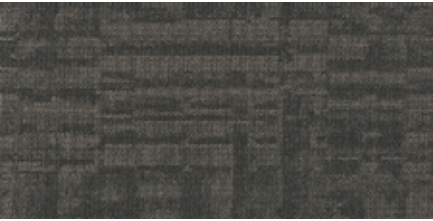
COLOR 2393
pincord



COLOR 2394
jacquard



COLOR 2395
tricot



COLOR 2396
tweed



COLOR 2397
seersucker



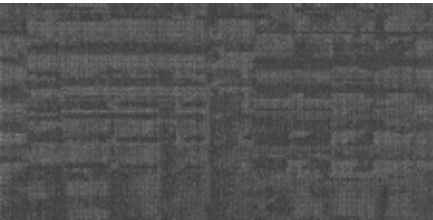
COLOR 2398
duck



COLOR 2399
oilcloth



COLOR 2400
flocked



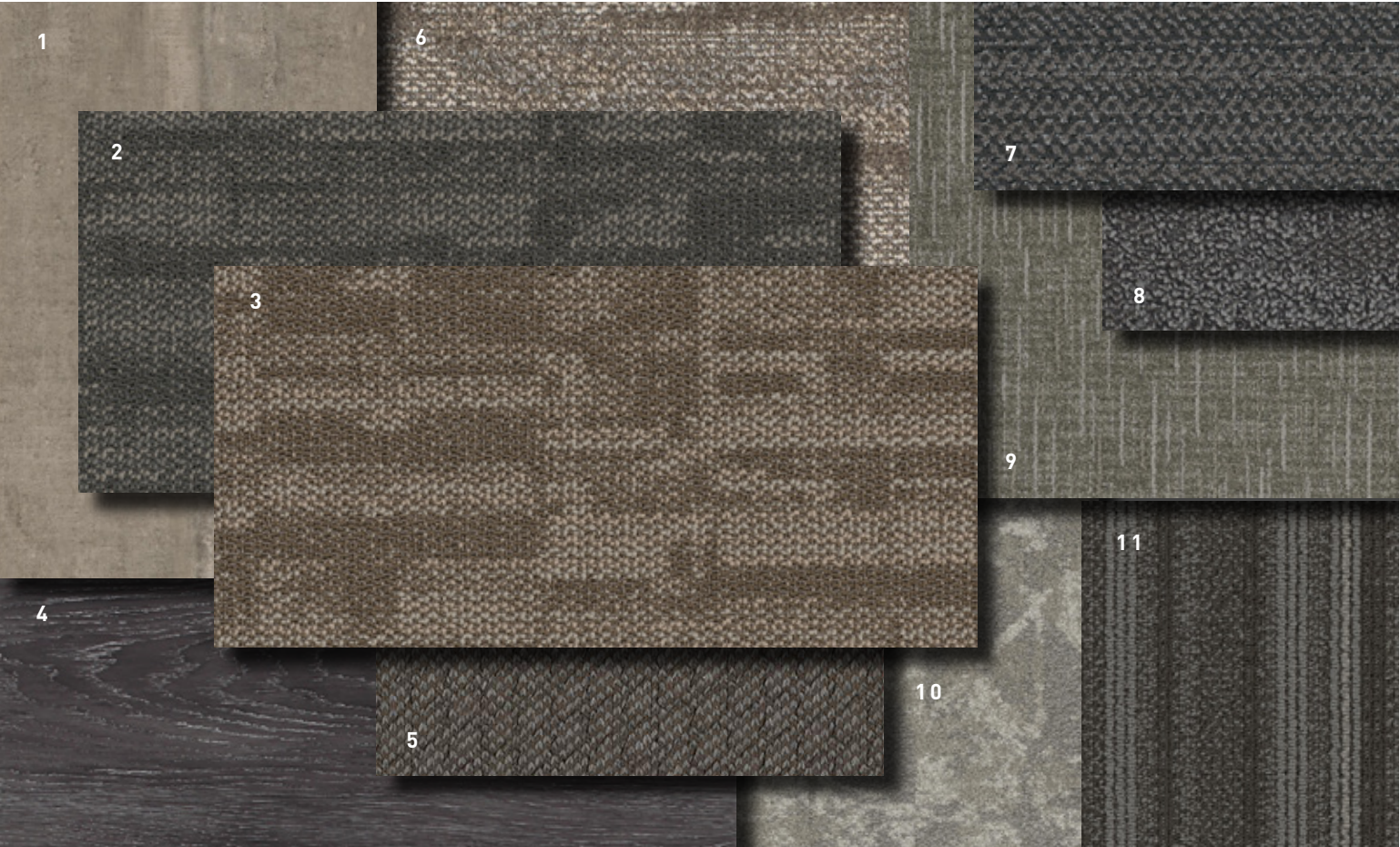
COLOR 2401
jersey



COLOR 2402
twill



OUTFITTER // MUSLIN // DUCK // heringbone
(back cover) OUTFITTER // JERSEY // FLOCKED // ashlar



COORDINATES

Beyond the beauty of individual products, our flooring coordinates effortlessly across all of our product platforms - modular carpet tile, broadloom, LVT and Kinetex textile composite flooring. This offering enables you to blend a range of designs with tonal simplicity to create palettes that reflect the demands of each unique space.

- 1. **LEGEND** // V5010 // 1059 Fiction // LVT
- 2. **OUTFITTER** // 7064 // 2398 Duck // Modular
- 3. **OUTFITTER** // 7064 // 2391 Muslin // Modular
- 4. **FRAMEWORK** // V5001 // 1014 Partition // LVT
- 5. **PROPEL II** // 1817 // 1702 Guide // Kinetex
- 6. **ORGANIC RAKU** // 7062 // 2344 Sillica // Modular
- 7. **JACK** // 7914 // 3420 Blazer // Modular
- 8. **DAPPER** // 7913 // 3420 Blazer // Modular
- 9. **CAMEO II** // 7949 + 9349 // 2001 Katniss // Modular + Broadloom
- 10. **OBSIDIAN** // 7718 // 2960 Feldspar // Modular
- 11. **TANDEM** // 7066 // 2514 Bread & Butter // Modular

FIBER

Encore® SD Ultima Nylon (with recycled content) is specifically engineered to maximize appearance retention with exceptional color, performance, sustainability and practicality.

MOISTURE

Are high levels of moisture in your concrete slab causing issues with your project’s floor covering? We can help.

- » Nexus® Modular Carpet with TileTabs – 99% RH
- » Cost-efficient
- » Long-term performance
- » Straightforward, easy-to-understand warranty
- » Requires no special floor preparation

TECHNOLOGIES

ProTex® Anti-Soil Treatment

ProTex is a proprietary anti-soil treatment technology that is applied and bonded to the pile fiber to impede soiling and to improve cleanability. It is standard on all J+J Flooring products.

OPTIONAL:

ProSept® Antimicrobial

Sentir® Advanced Odor-Blocking Technology

BACKINGS

Nexus® Modular products can be installed in a variety of ways and are performance engineered to be visually appealing. In addition, they are designed to accommodate your long-term flooring budget.

- » Manufactured in an ISO 14001 certified facility
- » Contains pre-consumer recycled content and contributes to LEED
- » Recyclable through the J+J Flooring’s R4 Carpet Reclamation Program

ADHESIVE

Commercialon® Premium Modular Adhesive

is a high strength acrylic latex-based carpet adhesive specifically formulated for bonding modular PVC backed carpet to the floor. This premium adhesive is for use with all Nexus Modular Tile products. This adhesive is guaranteed for the lifetime of the installation when used in accordance with the J+J Flooring installation instructions. Commercialon® Premium Modular Adhesive meets the CRI Low-VOC Emission Criteria, CRI ID# PSA-425402. Commercialon® PremiumModular Adhesive is non toxic, has ultra-low odor and is antimicrobial in the dry state.

OPTIONAL:

Commercialon® High Moisture Adhesive

TileTabs - High Tack Adhesive Tabs (modular only)

STYLE

outfitter 7064 modular

CONSTRUCTION

textured patterned loop

FIBER TYPE

Encore® SD Ultima® Nylon

DYE METHOD

solution dyed

OUNCE WEIGHT

15.0 oz./sy (509 grams/m2)

GAUGE

1/12 (4.72 rows/cm)

BACKING

Nexus® modular

SIZE

18” x 36” (45.72 cm x 94.44 cm)

PATTERN REPEAT

n/a

TOTAL THICKNESS
(nominal average)

0.25 inches (0.635 cm)

SPECIAL TECHNOLOGY

ProTex® anti-soil treatment

OPTIONAL SPECIAL
TECHNOLOGIES

ProSept® antimicrobial

Sentir® advanced odor blocking treatment

PHYSICAL TESTING

flooring radiant panel (class 1)

pill test – (passes)

smoke density
(less than 450 flaming)

static generation
(less than 3.5 kv)

ADA compliance
(compliant for accessible routes)

FIBER WARRANTIES

lifetime fiber performance for wear

lifetime fiber performance for static

lifetime stain removal

colorfastness to light and atmospheric contaminants

BACKING WARRANTIES

lifetime for tuft bind strength (edge ravel, yarn pulls, zippering)

lifetime against delamination

lifetime dimensional stability

MODULAR INSTALLATION
METHODS



ashlar



basketweave



herringbone



parquet

STRAIGHT-FORWARD WARRANTIES					
Warranty: Installed with TileTabs	Warranty: Installed with Commercialon® Premium Adhesive and Commercialon® High Moisture Adhesive (non-prorated)	Warranty: Installed with any other adhesive	Max RH, pH: Installed without Commercialon® Premium Sealer	Max RH, pH: Installed with Commercialon® Premium Sealer	Max RH, pH: Installed with Commercialon® High Moisture Adhesive
Lifetime	Lifetime	1 Year	90% RH, pH 9	99% RH, pH 11 (TileTabs) 97% RH, pH 11 (Commercialon® Adhesive)	99% RH, pH12



©2023 J+J Flooring Group, LLC - This unique design is protected under the U.S. Copyright Act of 1976. Any unauthorized copying or duplication of this design constitutes copyright infringement in violation of federal law. Due to the unique visual characteristics of modular carpets, pattern repeats and pattern run-off seams may appear more noticeable than in broadloom carpets. Such visual characteristics do not constitute a manufacturing defect, and as such, should be considered when selecting modular carpet and its installation.

These photographs are representations of the installation for this modular product. Your modular installation may look different than these photos depending upon individual tile placement, lighting, and overall space layout, including furnishings. Final tile placement and the resulting visual is thus the customer’s, and not J+J Flooring’s responsibility.

MODULAR

18" x 36" PLANK



P.O. BOX 2207

DALTON, GA 30722

P 800 241 4586

F 706 275 4433

JJFLOORING.COM

carpet | lvt | kinetex



FLOORING
A DIVISION OF ENGINEERED FLOORS