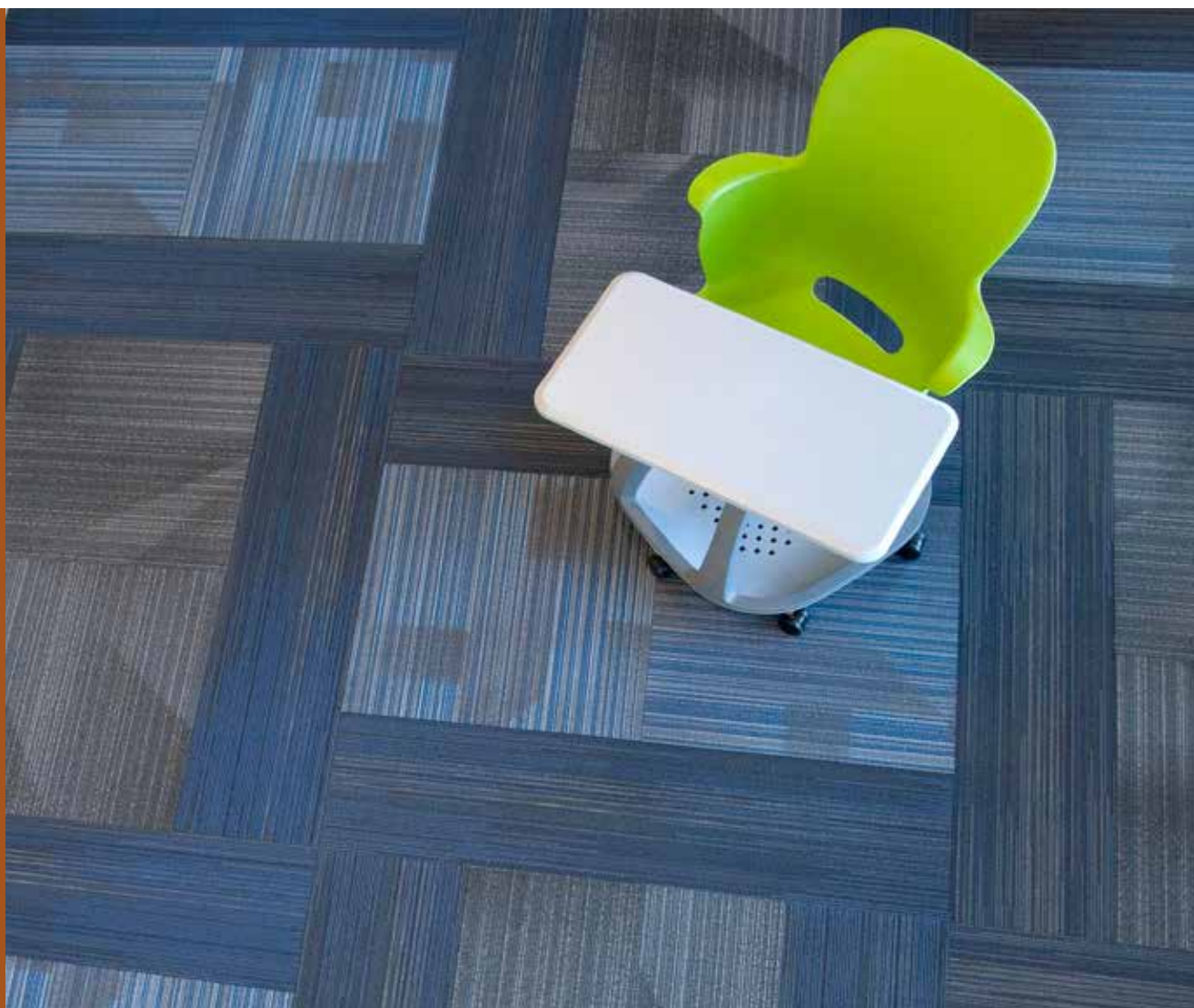


EDUCATION
SKYLINE / ELEVATED

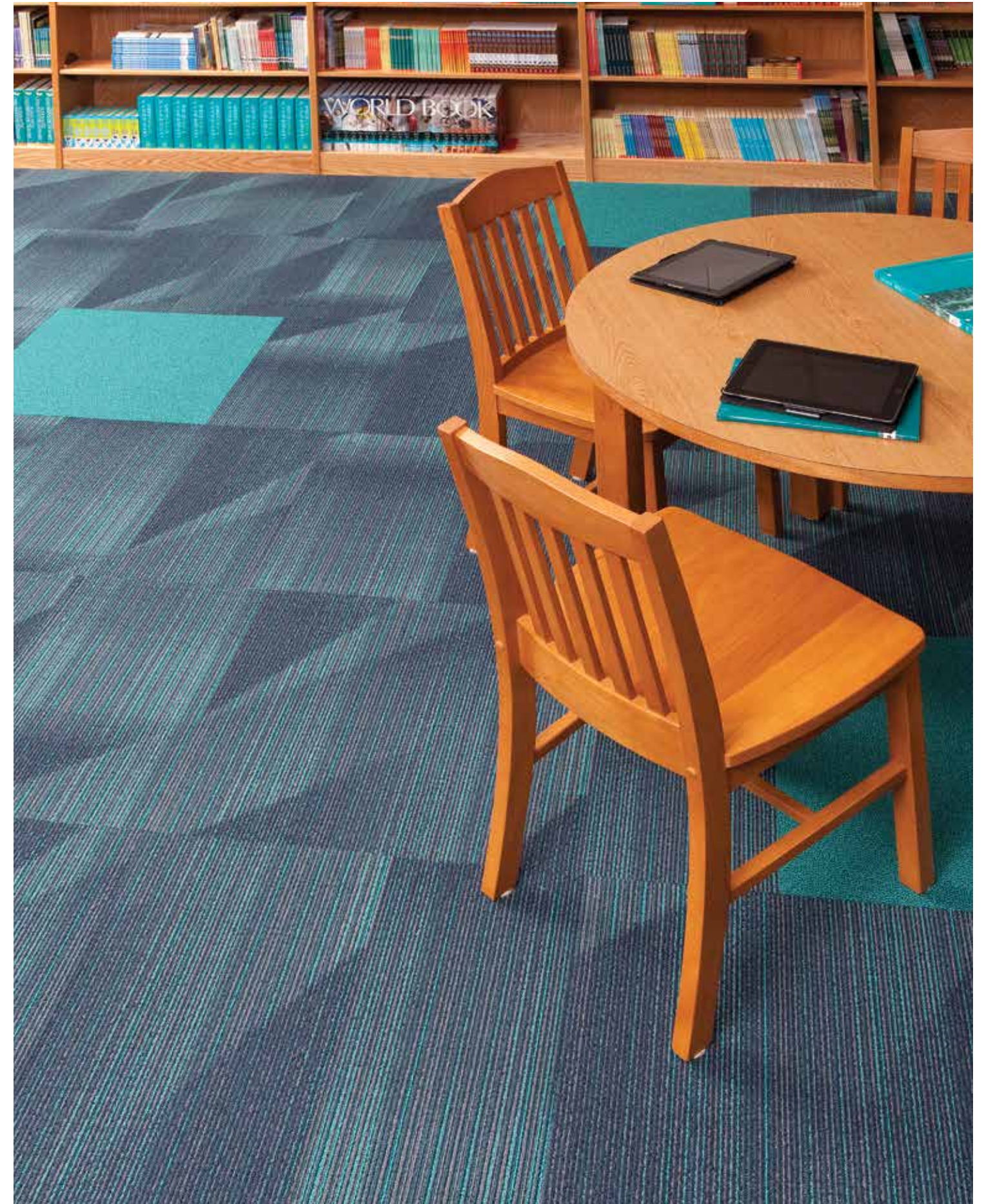


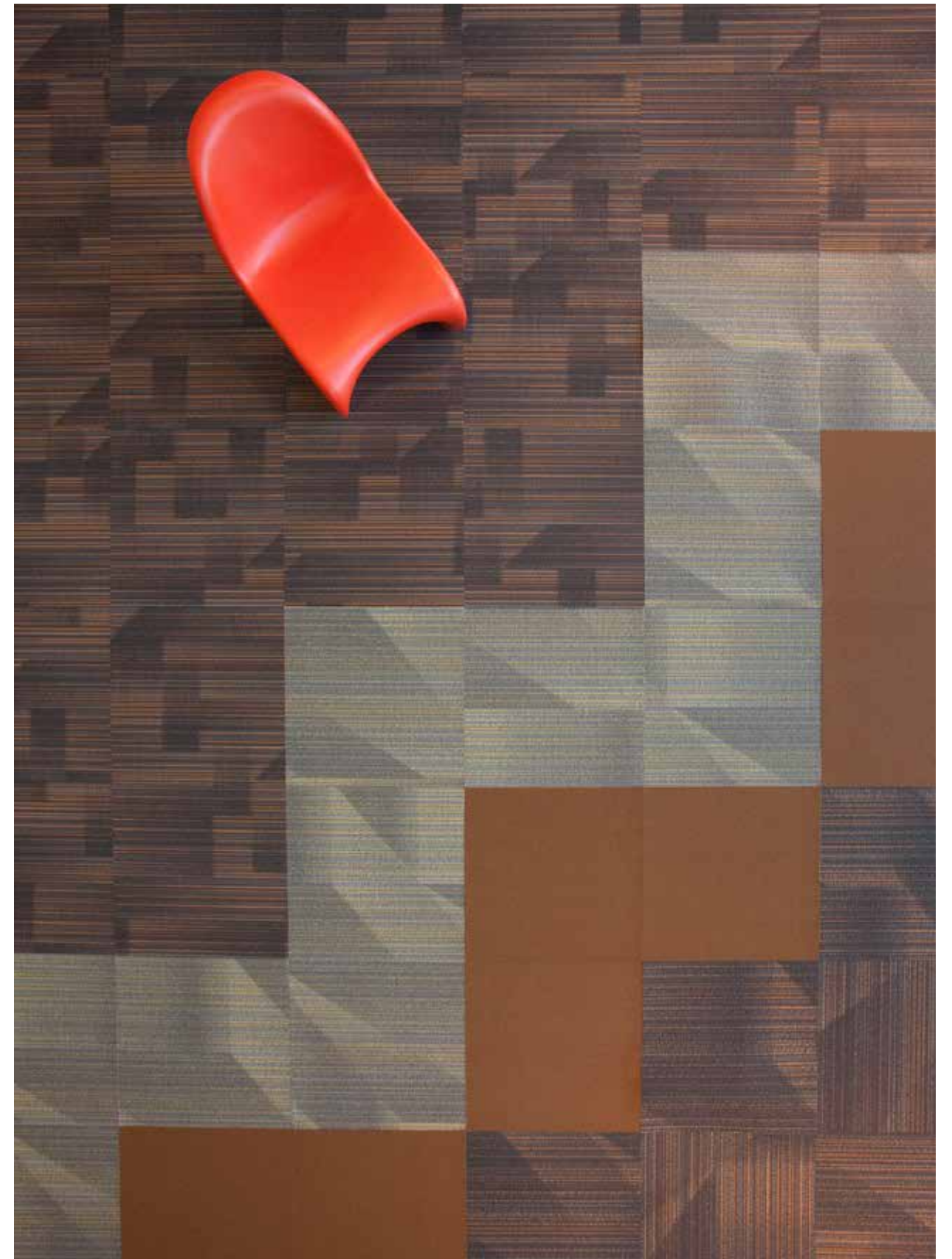
J+J FLOORING GROUP

From our establishment in 1957, we have become one of the oldest exclusive manufacturers of *commercial flooring* in the United States. As one of the largest privately held mills, our **FAMILY-OWNERSHIP** provides a *heritage* of proven performance and expansive industry knowledge. Most importantly, our focus has always been on *people...* ensuring them that our products deliver the highest levels of **BEAUTY**, **PERFORMANCE** and **DEPENDABILITY**.

carpet | lvt | kinetex

[cover] Skyline View, quarter turn, Elevated Zenith, quarter turn, Index Issue, demi-plank.
[right] Elevated Panorama, brick, Chroma Vivid, insert.



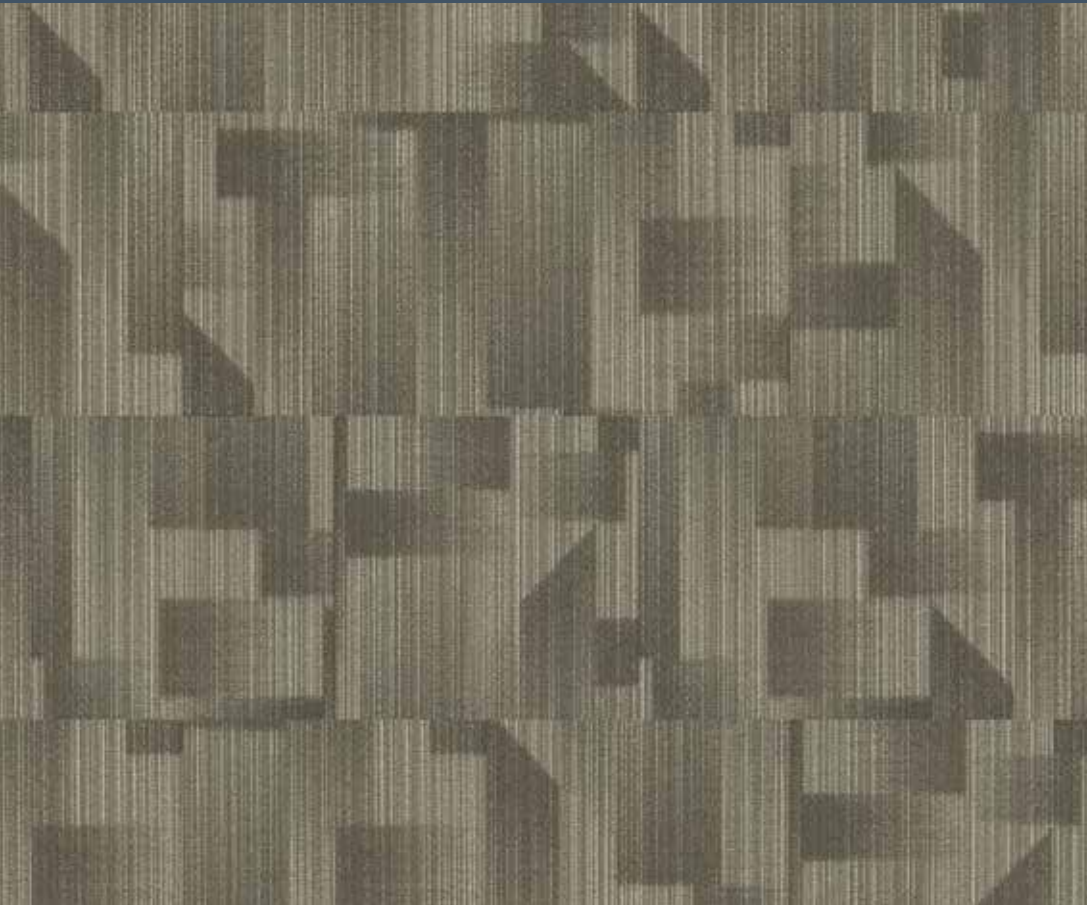


(above) *Skyline Landmark*, monolithic, *Skyline Horizon*, quarter turn, *Elevated Overlook*, monolithic, *Chroma Tinge*, monolithic. (left) *Skyline Zenith*, non-directional.

SKYLINE 7073

SPECIFICATION

construction	textured patterned loop
fiber type	100% Encore® SD Ultima® nylon
dye method	solution dyed
ounce weight	16 oz (543 grams)
gauge	1/12 (4.72 rows/cm)
backing	Nexus® modular
size	24" x 24"



Quick Ship style 7073
2052
vista



Quick Ship style 7073
2057
aerial



style 7073
2062
sight line



style 7073
2067
perspective



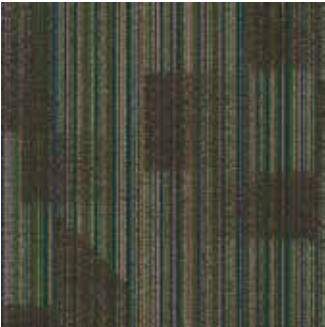
Quick Ship style 7073
2053
zenith



style 7073
2058
overlook



style 7073
2063
survey



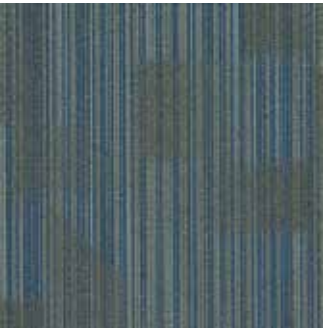
style 7073
2068
plan



style 7073
2054
highrise



style 7073
2059
horizon



style 7073
2064
view



style 7073
2069
terrace



Quick Ship style 7073
2055
beacon



style 7073
2060
landmark



style 7073
2065
empire



style 7073
2070
vanishing point



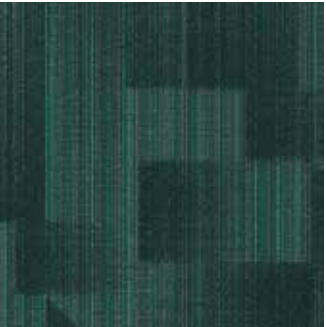
style 7073
2056
backdrop



style 7073
2061
vector



style 7073
2066
silhouette



style 7073
2071
panorama



(above) Skyline Overlook, monolithic, Index Volume, and Terra Coloris Cadmium.



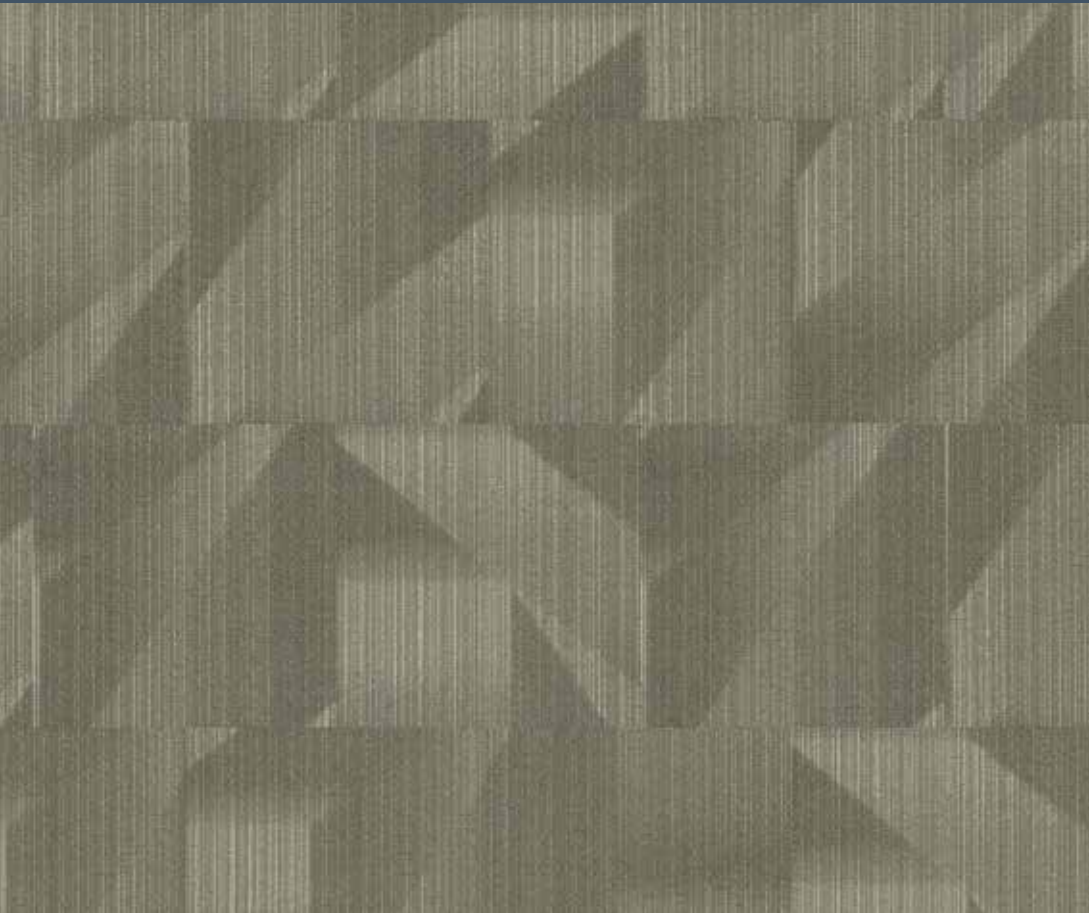
(above) Skyline Terrace, monolithic, Elevated Plan, quarter turn.
 (top right) Skyline Sight Line, brick.
 (top left) Elevated Sight Line, monolithic, Chroma Tinge, monolithic.
 (bottom left) Skyline Terrace and View, Chroma Primary and Vibrant monolithic.



ELEVATED 7074

SPECIFICATION

construction	textured patterned loop
fiber type	100% Encore® SD Ultima® nylon
dye method	solution dyed
ounce weight	16 oz [543 grams]
gauge	1/12 [4.72 rows/cm]
backing	Nexus® modular
size	24" x 24"



Quick Ship style 7074
2052
vista



Quick Ship style 7074
2057
aerial



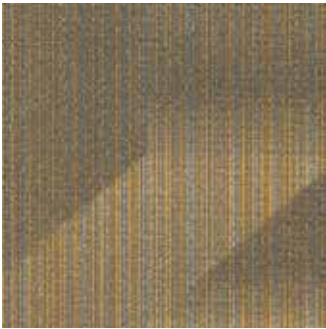
style 7074
2062
sight line



style 7074
2067
perspective



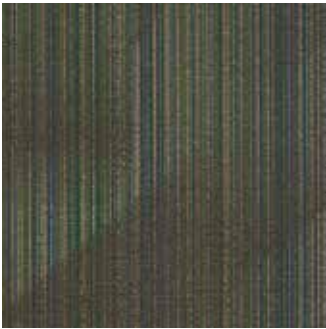
Quick Ship style 7074
2053
zenith



style 7074
2058
overlook



style 7074
2063
survey



style 7074
2068
plan



style 7074
2054
highrise



style 7074
2059
horizon



style 7074
2064
view



style 7074
2069
terrace



Quick Ship style 7074
2055
beacon



style 7074
2060
landmark



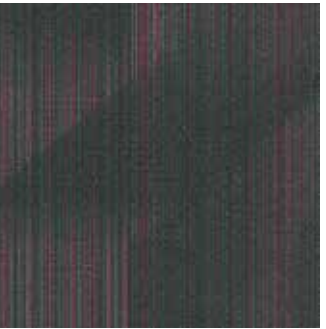
style 7074
2065
empire



style 7074
2070
vanishing point



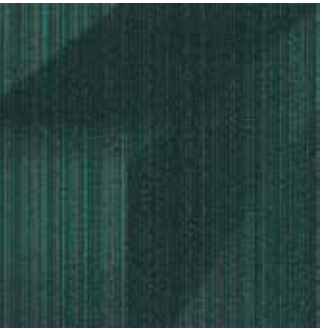
style 7074
2056
backdrop



style 7074
2061
vector



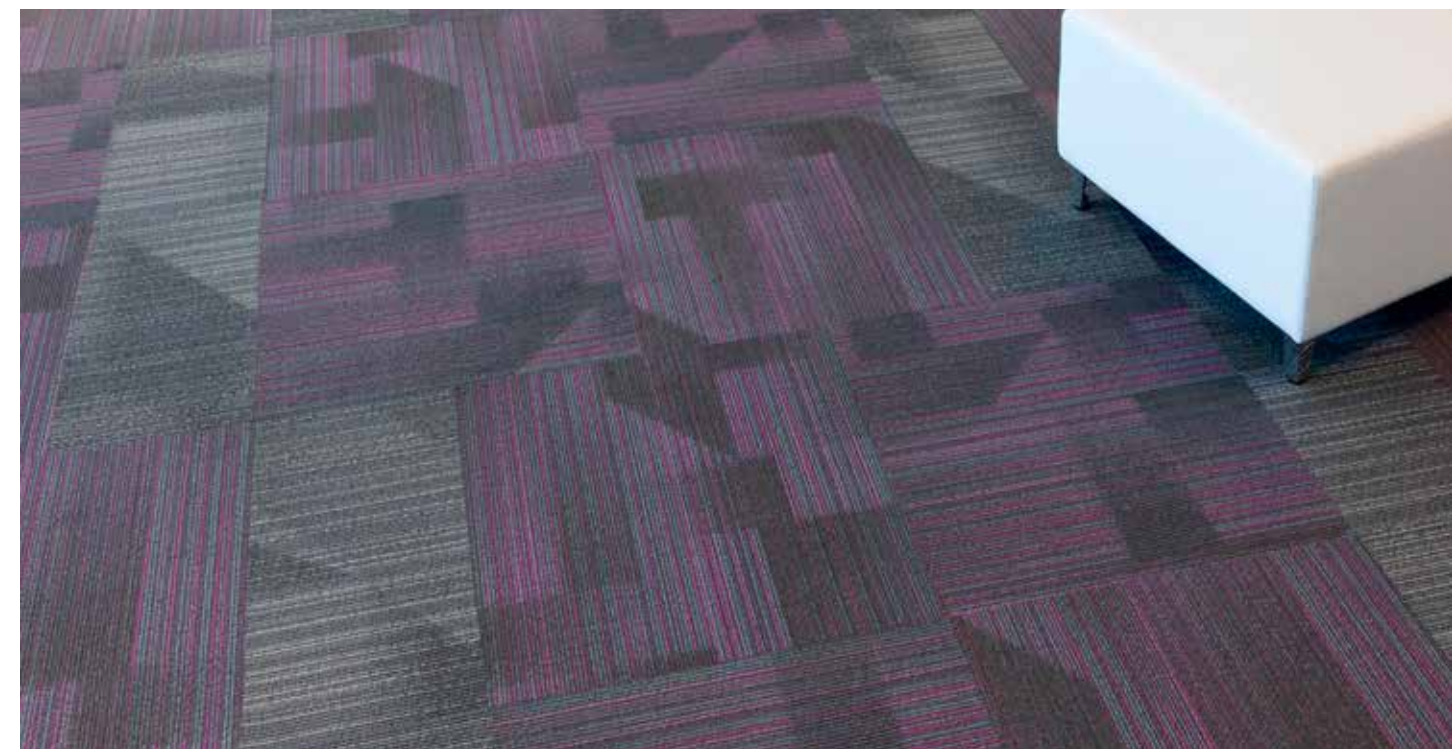
style 7074
2066
silhouette

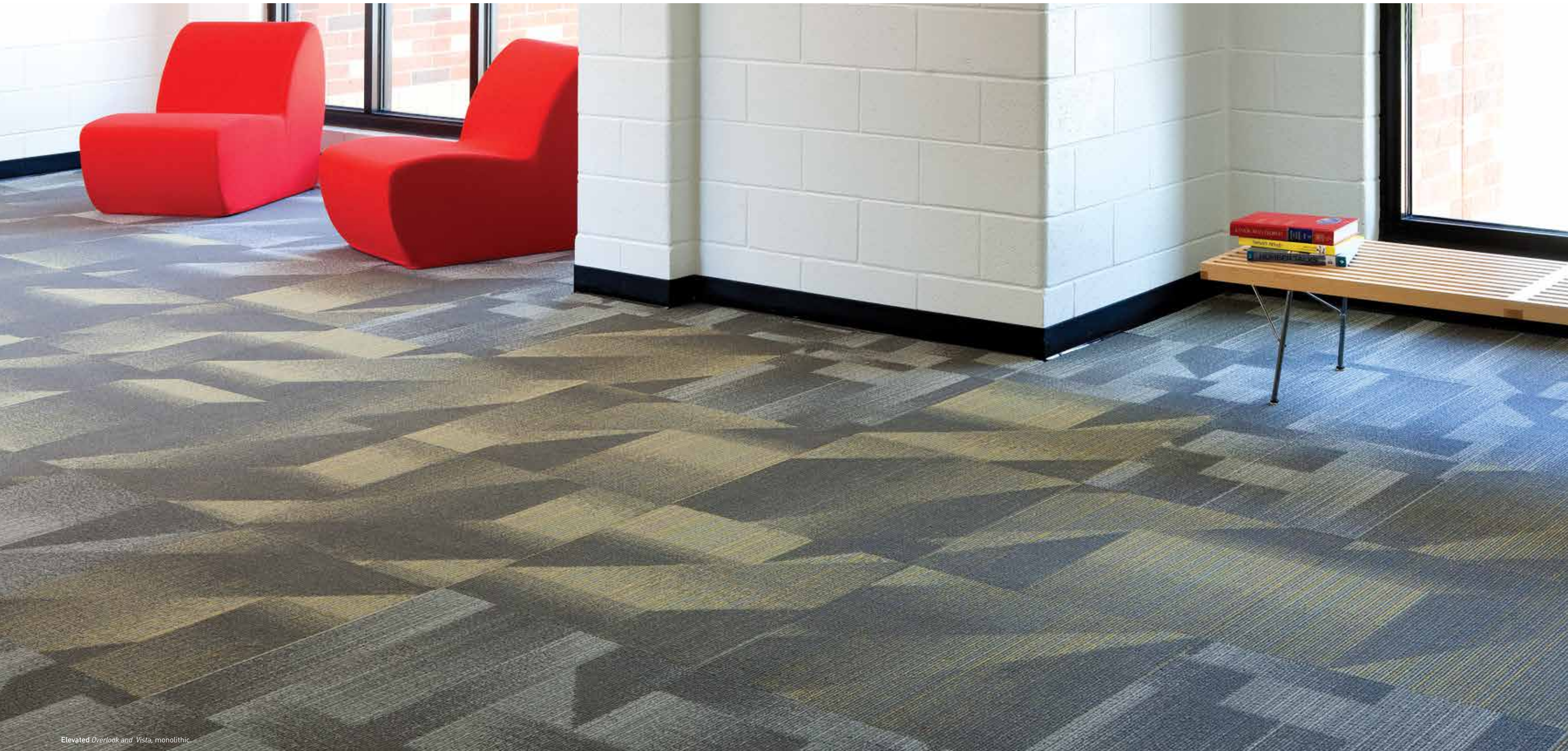


style 7074
2071
panorama



(page 12) *Elevated Zenith*, monolithic,
Index demi-plank *Issue*.
 (left) *Skyline Zenith* with *Index Volume*.
 (below) *Skyline Vector*, quarter turn, *Elevated Zenith*.

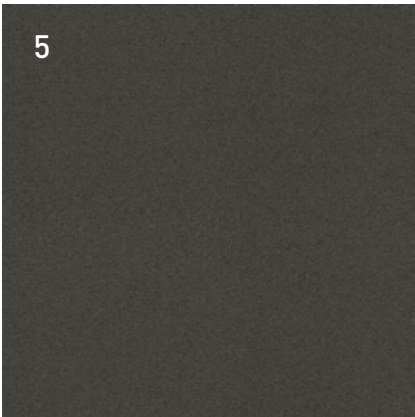
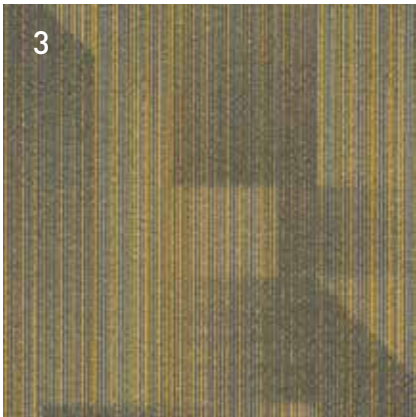
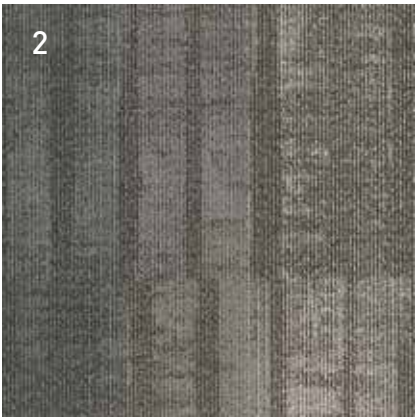




Elevated Overlook and Vista, monolithic.



coordinating palette



1	Index	7009	#1828	Volume	Modular
2	Well Versed	7072	#2026	Plath	Modular
3	Skyline	7073	#2058	Overlook	Modular
4	Index	7009	#1832	Catalog	Modular
5	Chroma	7031	#1960	Value	Modular
6	Elevated	7074	#2055	Beacon	Modular

product details

FIBER

Encore® SD Ultima® (with recycled content)
Encore SD Ultima is specifically engineered to maximize appearance retention with exceptional color, performance, sustainability and practicality.

BACKINGS

Nexus® Modular
Nexus modular products can be installed in a variety of ways and are performance engineered to be visually appealing. In addition, they are designed to accommodate your long-term flooring budget.

- Manufactured in an ISO 14001 certified facility
- Contains pre-consumer recycled content and contributes to LEED
- Recyclable through the J+J Flooring Group's R4 Carpet Reclamation Program

ADHESIVES

Commercialon® Premium Modular Adhesive
A high strength acrylic latex-based carpet adhesive specifically formulated for bonding modular PVC backed carpet to the floor. This premium adhesive is for use with all Invision Nexus Modular Tile products. This adhesive is guaranteed for the life of the installation when used in accordance with the J+J Flooring Group Carpet Installation Handbook. Commercialon Premium Modular Adhesive meets the CRI Low-VOC Emission Criteria, CRI ID# PSA-425402. Commercialon Premium Modular Adhesive is non toxic, has ultra-low odor and is antimicrobial in the dry state.

OPTIONAL:
TileTabs - High Tack Adhesive Tabs (modular only)

TECHNOLOGIES

ProTex® Soil Release
ProTex is a proprietary fluorochemical technology that is applied and bonded to the pile fiber to impede soiling and to improve cleanability. It is standard on all J+J Flooring Group products.

OPTIONAL:
ProSept® Antimicrobial
Sentir® Advanced Odor-Blocking Technology

corporate programs



Green Circle - Zero Waste to Landfill Operations Certification
We are proudly certified as a Zero Waste to Landfill manufacturer by GreenCircle Certified, LLC., a prominent third-party certifier of environmental claims. We are the first commercial flooring manufacturer in the United States to achieve this landfill free status and the first company in the industry to have its waste diversion efforts audited and verified by a recognized, third-party certifier.

To learn more about zero waste or our other initiatives see our sustainability progress report online at jjflooring.com/sustainability



We're on it.
The J+J Flooring Group Premium Customer Experience.

Our Premium Customer Experience is a carefully crafted process by which we guarantee that our customers will get the products, services and the reliability they expect from us.

To learn more visit jjflooring.com/about/cx

©2016 J&J Flooring Group, LLC - This unique design is protected under the U.S. Copyright Act of 1976. Any unauthorized copying or duplication of this design constitutes copyright infringement in violation of federal law.

Due to the unique visual characteristics of modular carpets, pattern repeats and pattern run-off seams may appear more noticeable than in broadloom carpets. Such visual characteristics do not constitute a manufacturing defect, and as such, should be considered when selecting moduar carpet and its installation.

These photographs are representations of the installation for this modular product. Your modular installation may look different than these photos depending upon individual tile placement, lighting, and overall space layout, including furnishings. Final tile placement and the resulting visual is thus the customer's, and not J+J Flooring Group's responsibility.



style	skyline 7073 modular	elevated 7074 modular
construction	textured patterned loop	textured patterned loop
fiber type	100% Encore® SD Ultima® Nylon with recycled content	100% Encore® SD Ultima® Nylon with recycled content
dye method	solution dyed	solution dyed
ounce weight	16 oz/sy (543 grams/m²)	16 oz/sy (543 grams/m²)
gauge	1/12 (4.72 rows/cm)	1/12 (4.72 rows/cm)
backing	Nexus® modular	Nexus® modular
size	24" x 24" (61 cm x 61 cm)	24" x 24" (61 cm x 61 cm)
pattern repeat	n/a	n/a
total thickness (nominal average)	.25 inches (0.635 cm)	.25 inches (0.635 cm)
special technology	ProTex® fluorochemical	ProTex® fluorochemical
optional special technologies	ProSept® antimicrobial Sentir® advanced odor blocking treatment	ProSept® antimicrobial Sentir® advanced odor blocking treatment
physical testing	flooring radiant panel (class 1) pill test – (passes) smoke density (less than 450 flaming) static generation -(less than 3.5 kv) ADA compliance (compliant for accessible routes)	flooring radiant panel (class 1) pill test – (passes) smoke density (less than 450 flaming) static generation -(less than 3.5 kv) ADA compliance (compliant for accessible routes)
warranties	lifetime fiber performance for wear lifetime fiber performance for static lifetime stain removal lifetime colorfastness to light and atmospheric contaminants lifetime for tuft bind strength (edge ravel, yarn pulls, zippering) lifetime against delamination lifetime dimensional stability	lifetime fiber performance for wear lifetime fiber performance for static lifetime stain removal lifetime colorfastness to light and atmospheric contaminants lifetime for tuft bind strength (edge ravel, yarn pulls, zippering) lifetime against delamination lifetime dimensional stability

modular installation methods



ashlar



brick



monolithic



quarter turn



non-directional

Skyline / Elevated colors 2052 vista, 2053 zenith, 2055 beacon, 2057 aerial, and 2070-vanishing point are available as a part of our Quick-Ship program. *Orders up to 1,500 square yards (13,500 sq. ft.) will ship within 10 days.*



jjflooring.com

P.O. Box 1287
Dalton, GA 30722
p 800 241 4586
f 706 275 4433

INVISION **kinetex**

A Division of Engineered
FLOORS