

kinetex

18"x36" MODULAR

# Soundtrack



FLOORING



# Soundtrack



## INSPIRATION

What does the soundtrack of your life sound like? We all have that collection of songs that we keep as our life theme, that spurs us onward, enhances or shifts our mood, or simply allows us to wistfully reminisce. Soundtrack voices the flow and tone of musical rhythms. Its canvas of abstract bars and notes come together in a delicate pattern veiled over fades of soft color. The latest Kinetex 18"x36" plank, available in 12 colorways, creates a unique visual alone or also harmonizes perfectly with Umbra II in designing for traffic flow and personal workspace environments.



(cover) SOUNDTRACK // MUSIC // ashlar  
(right) SOUNDTRACK // DIGITAL // ashlar











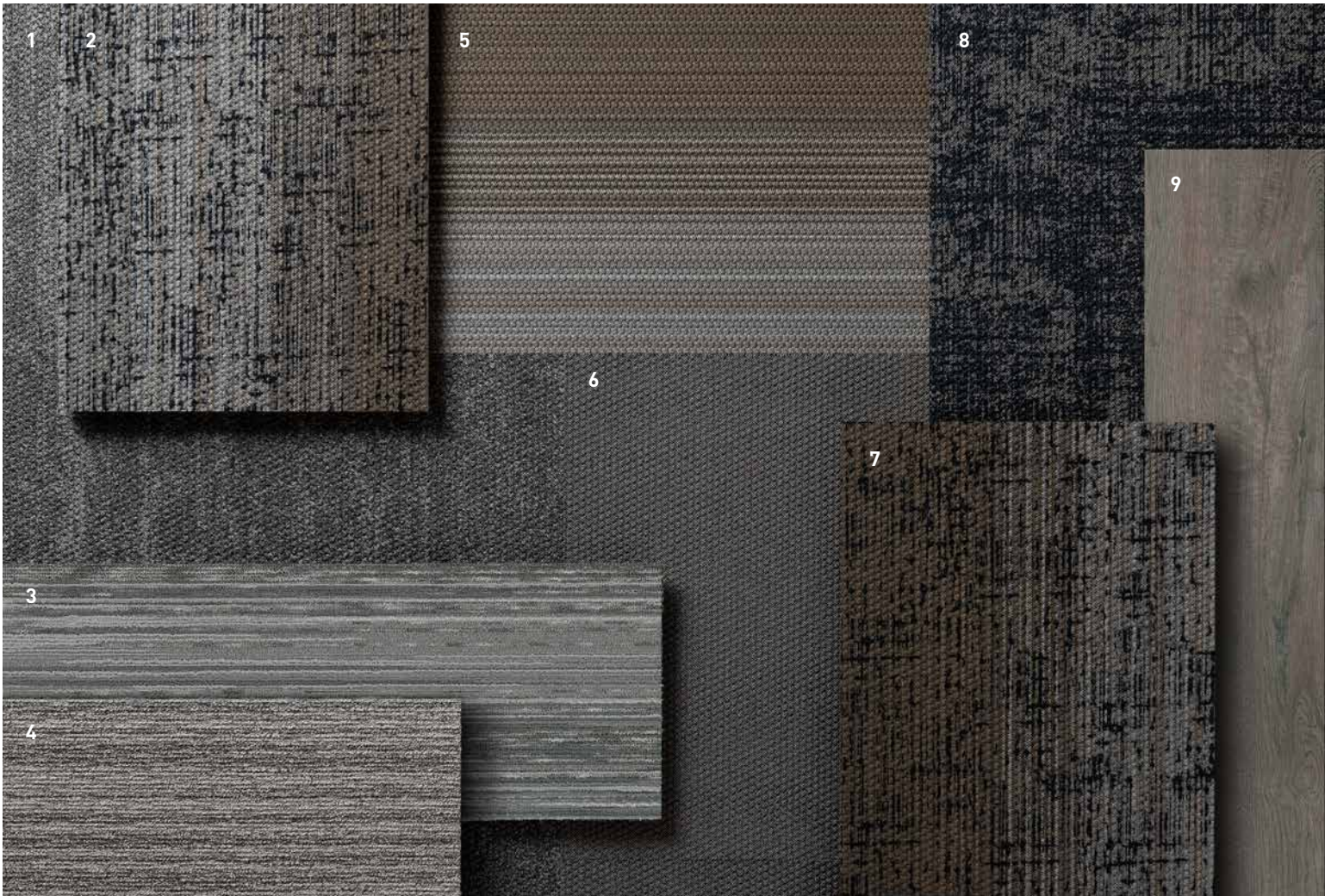






SOUNDTRACK // ALBUM // basketweave  
(back) SOUNDTRACK // PLAYLIST // ashlar

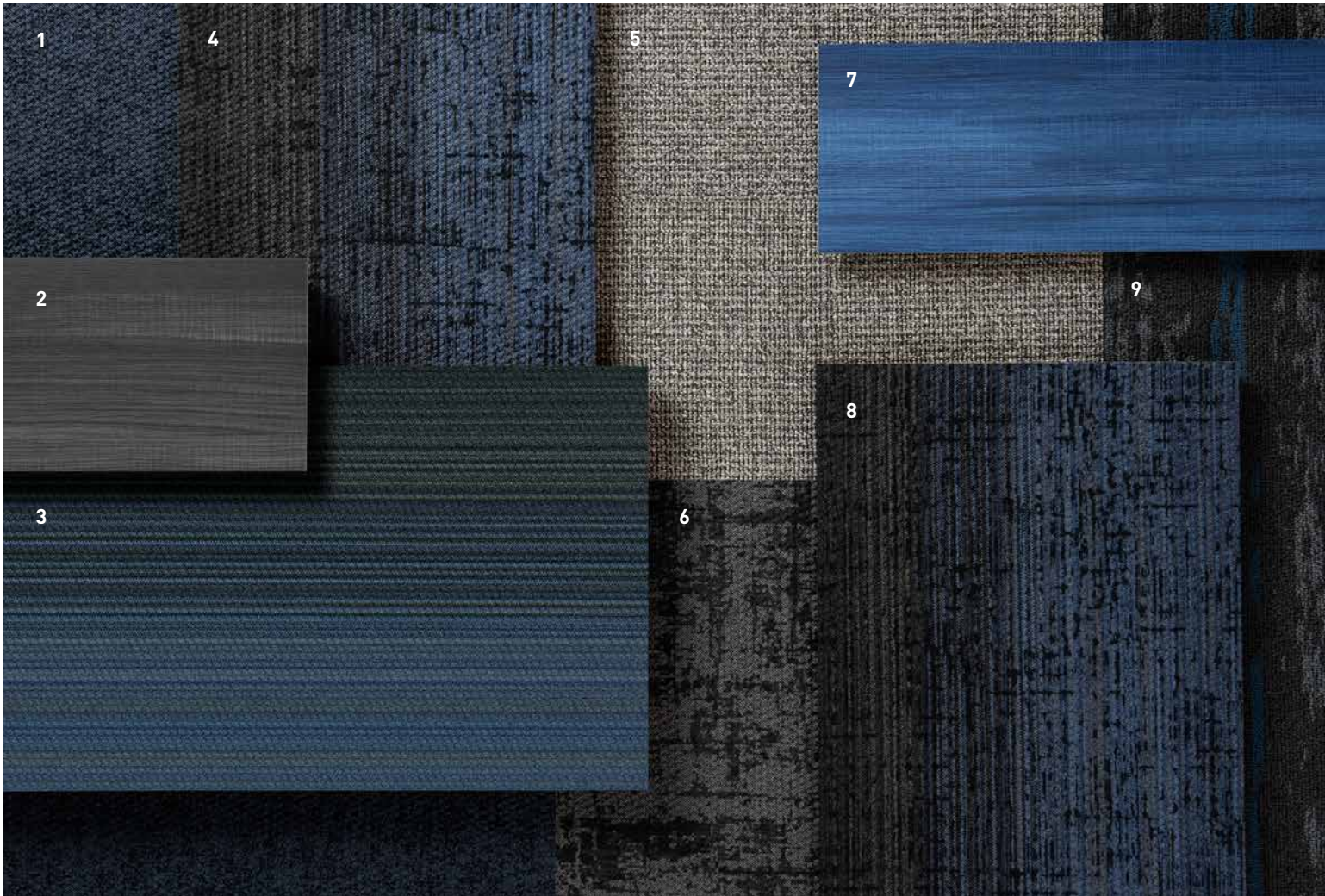




## COORDINATES

Beyond the beauty of individual products, our flooring coordinates effortlessly across all of our product platforms - modular carpet tile, broadloom, LVT and Kinetex textile composite flooring. This offering enables you to blend a range of designs with tonal simplicity to create palettes that reflect the demands of each unique space.

1. STRATA // 1826 // #1852 Sediment // Kinetex
2. SOUNDTRACK // 1847 // #3017 Album // Kinetex
3. STRIA // 7585 // #2745 Fleece // Modular
4. CONVERGENT // 7925 // #3062 Medley // Modular
5. UMBRA II PLANK // 1819 // #1762 Opaque // Kinetex
6. PROPEL II // 1817 // #1707 Advance // Kinetex
7. SOUNDTRACK // 1847 // #3017 Album // Kinetex
8. NETWORK // 1842 // #2918 Index // Kinetex
9. TIMELESS // V5011 // #1061 Gift // LVT

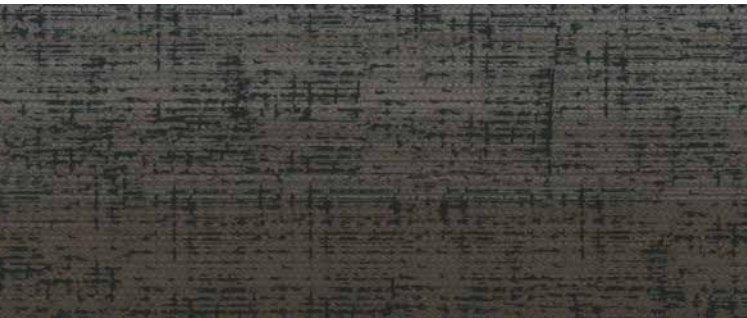


1. STIPPLE // 1838 // #2691 Speckled // Kinetex
2. MAKE YOUR MARK // V5012 // #1065 Charcoal // LVT
3. UMBRA II PLANK // 1819 // #1766 Eclipse // Kinetex
4. SOUNDTRACK // 1847 // #3026 Digital // Kinetex
5. STRUCTURE // 2010 // #1801 Pilaster // Modular
6. ANALOG MONO // 1822 // #1552 Correlate // Kinetex
7. MAKE YOUR MARK // V5012 // #1067 Cobalt // LVT
8. SOUNDTRACK // 1847 // #3026 Digital // Kinetex
9. STORYLINE // 7589 // #3008 Prose // Modular

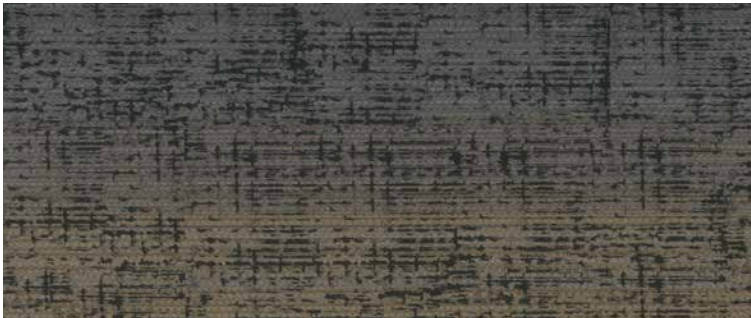


# Soundtrack

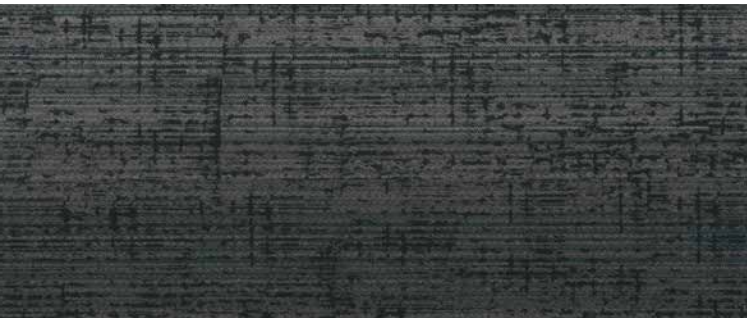
18"x36" MODULAR



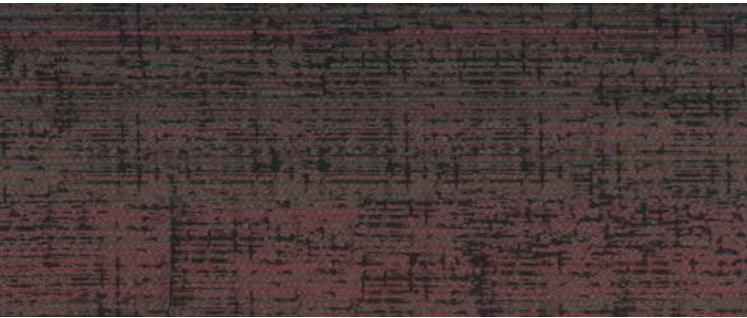
COLOR 3017  
album



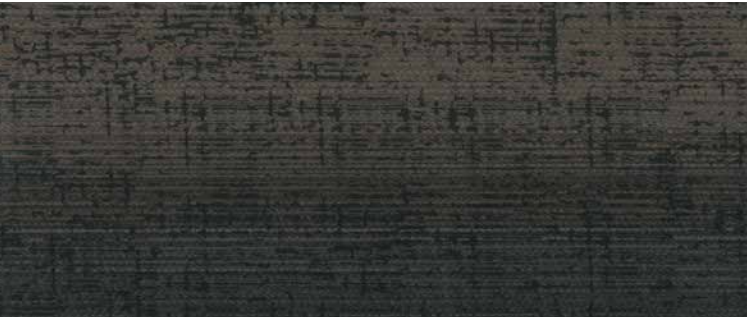
COLOR 3021  
remix



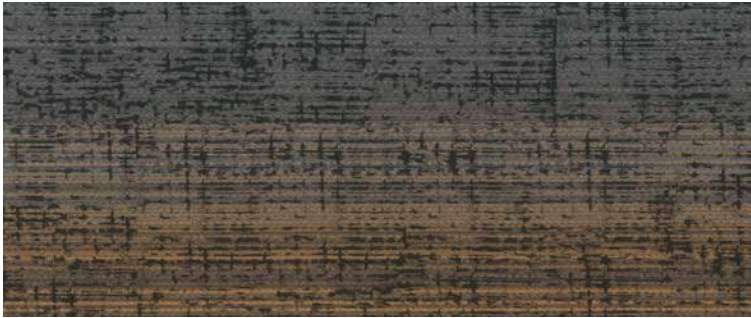
COLOR 3020  
radio



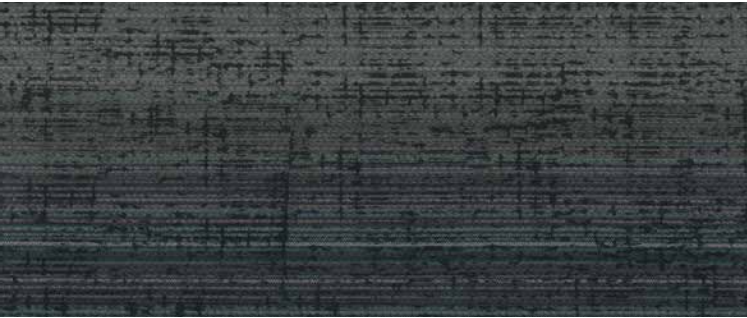
COLOR 3024  
cd



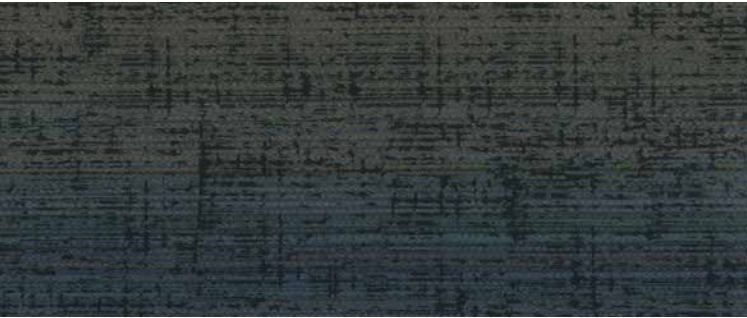
COLOR 3018  
playlist



COLOR 3022  
cassette



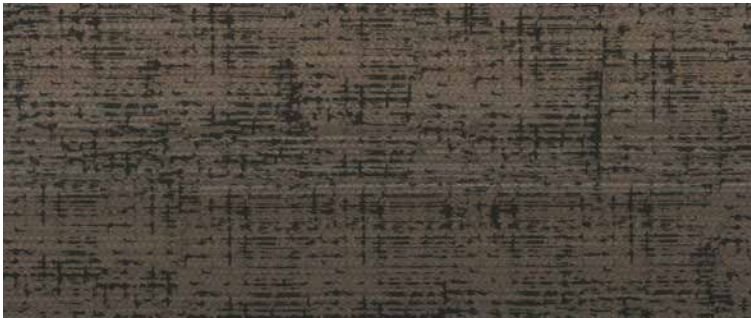
COLOR 3025  
stereo



COLOR 3027  
acoustic



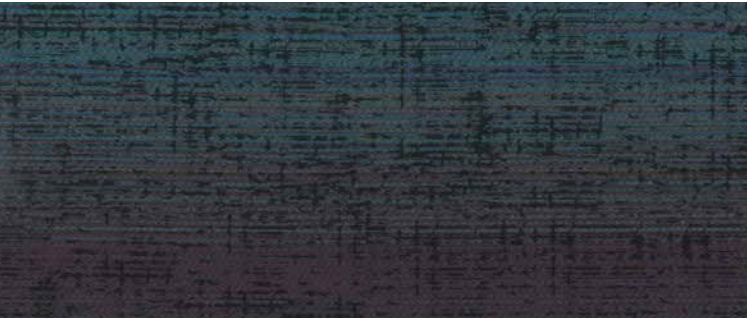
COLOR 3019  
music



COLOR 3023  
vinyl



COLOR 3026  
digital

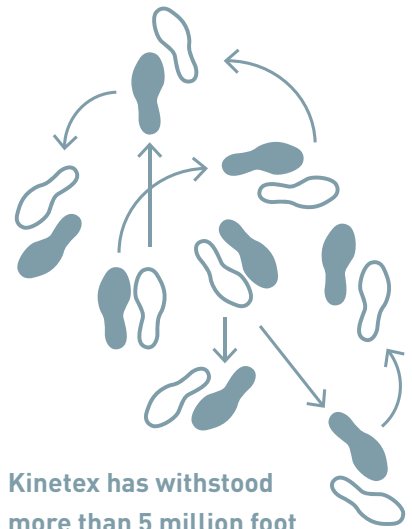


COLOR 3028  
beats



1. DURABILITY

Kinetex delivers enduring performance, year after year. One of the most thoroughly tested flooring products on the market, it has outstanding dimensional stability and unparalleled crush resistance.

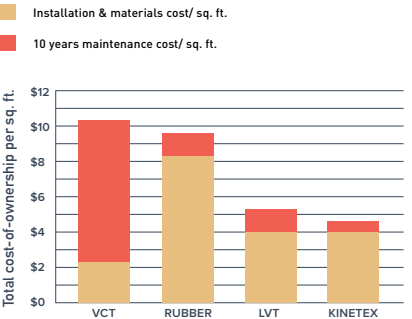


Kinetex has withstood more than 5 million foot traffic events.

2. MAINTENANCE

Tough to wear out, easy to maintain. With vacuuming and encapsulation cleaning, Kinetex looks like new, year after year. Thanks to a lightweight face construction, Kinetex retains less water than carpet and dries faster. It is easily sanitized and resists the most challenging staining agents.

Life Cycle Costs: INSTALLATION AND MAINTENANCE



3. MOISTURE TOLERANCE

The most common subfloor, concrete, can release excessive moisture and destroy floor covering systems—unless costly precautions are taken before installation. But moisture mitigation isn’t necessary with Kinetex; its breathable nature allows moisture to pass through its backing, instead of trapping it underneath. Kinetex textile composite flooring will perform in elevated RH slabs up to 100%.

100%  
RH TOLERANCE

BREATHABLE  
No trapped moisture.  
3rd party tested  
and verified.

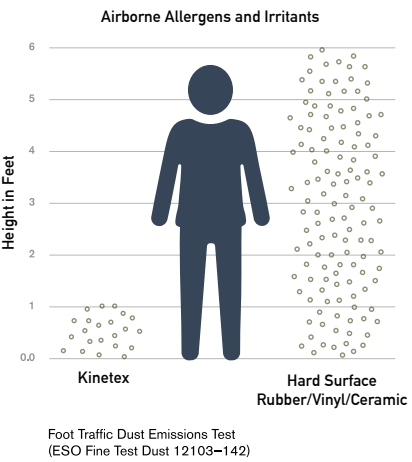
NO VAPOR BARRIER  
REQUIRED-  
regardless if the slab is new  
or old, regardless of  
hydrostatic pressure

Thousands of installations  
worldwide since 2012.  
NO MOISTURE-RELATED  
CLAIMS.

4. HEALTH

Kinetex minimizes air particulates that trigger allergies and cause infection. It easily surpasses California’s 01350 requirements— the most popular U.S. standard for evaluating and restricting VOC emissions indoors.

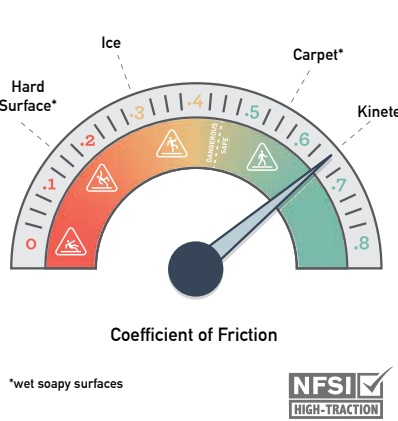
Easy Breathing



5. SAFETY

Kinetex is the only wall-to-wall textile floor covering certified as High-Traction by the National Floor Safety Institute. Its innovative construction creates one of the most slip-resistant flooring surfaces ever tested—wet or dry—to prevent falls before they happen.

Gaining Traction



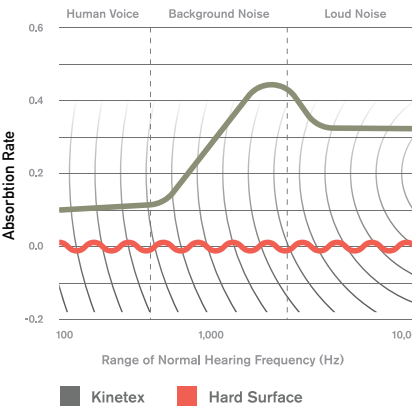
\*wet soapy surfaces

NFSI  
HIGH-TRACTION

6. ACOUSTICS

Kinetex delivers unparalleled acoustic performance, with one of the highest Noise Reduction Coefficients (NRC) and Impact Insulation Classifications (IIC) ratings of any commercial flooring product.

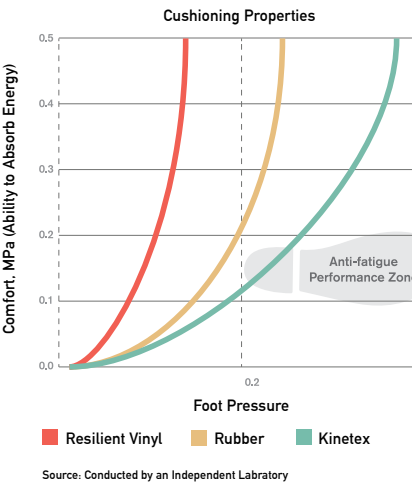
Keeping Quiet



7. COMFORT

Kinetex, a soft textile surface with a high-density backing, has exceptional anti-fatigue properties and minimal rolling resistance. Because it can absorb energy, Kinetex has the potential to reduce repetitive foot stress injuries and other injuries related to standing and frequent movement from place to place.

Step-by-Step Support



Source: Conducted by an Independent Laboratory

8. SUSTAINABILITY

Made with 45% post-consumer recycled content, each Kinetex tile contains the equivalent of 27 used water bottles. This dematerialized flooring product and its longer life mean that Kinetex has a much smaller environmental footprint than other commercial flooring options. Furthermore, Kinetex is NSF/ANSI-140 Platinum certified (the industry-leading standard for sustainability) and has a Red List Free DECLARE label.

Second Chances



Each Kinetex tile contains the equivalent of 27 plastic water bottles.

KINETEX INSTALLATION

Installing Kinetex is as easy as traditional modular carpet, however special attention should be applied until installers gain experience with module placement. Installers should perform site and material conditioning, surface preparation, and concrete pH and moisture testing as if they were installing J+J Flooring carpet modules. Because it is such a lightweight material the modules cut very easily, reducing installation time. Kinetex uses J+J Flooring’s proven adhesive systems with lifetime performance warranties.

Kinetex Adhesive

Kinetex Adhesive is formulated for Kinetex textile composite flooring products and is built to bond the textile composite to the properly prepared substrates for the life of the installation. Products with Kinetex Adhesive will perform in elevated RH slabs up to 100%.

PreFix® (optional)

PreFix includes a release liner that easily peels away to reveal pre-applied adhesive that securely anchors the Kinetex module in place. Products with PreFix will perform in elevated RH slabs up to 100%, allowing the flooring to be installed without costly moisture mitigation. PreFix offers a quick installation system and it can be added to all Kinetex products as an optional adhesive.

Please see the Kinetex installation instructions for full installation details.



WARRANTIES

We stand behind every aspect of Kinetex and extend certain lifetime warranties. Each warranty is covered for the useful life of the product, provided that installation and maintenance is in accordance with J+J Flooring’s Kinetex Installation instructions.

Wear Layer Warranties

Product Performance	Colorfastness to Light & Crocking	Stain Removal	Static Protection
Lifetime	Lifetime	Lifetime	Lifetime

Backing Warranties

Protection from Edge Ravel	Protection from Delamination Failure	Dimensional Stability
Lifetime	Lifetime	Lifetime



©2020 J+J Flooring Group, LLC - This unique design is protected under the U.S. Copyright Act of 1976. Any unauthorized copying or duplication of this design constitutes copyright infringement in violation of federal law. Due to the unique visual characteristics of modular carpets, pattern repeats and pattern run-off seams may appear more noticeable than in broadloom carpets. Such visual characteristics do not constitute a manufacturing defect, and as such, should be considered when selecting modular carpet and its installation.

These photographs are representations of the installation for this modular product. Your modular installation may look different than these photos depending upon individual tile placement, lighting, and overall space layout, including furnishings. Final tile placement and the resulting visual is thus the customer’s, and not J+J Flooring’s responsibility.

\*NRC rating is a measure of the effectiveness of a material in absorbing sound. The higher the NRC rating, the greater the ability of the flooring product to absorb airborne noise. Independent laboratory testing of Kinetex has shown an average NRC rating of 0.30 (bare concrete flooring will typically provide a NRC Rating of 0.015).

\*\*IIC is a rating of the insulation from impact noise. The higher the IIC rating, the greater the sound insulation. Independent laboratory testing of Kinetex has shown an average IIC Rating of .64 (bare concrete flooring will typically provide an IIC Rating of 34) NOTE: Test results and testing laboratory will vary, and the above information is not guaranteed.

STYLE

soundtrack 1847 modular

PHYSICAL CHARACTERISTICS

WEAR LAYER	polyester-applied pattern
BACKING	polyester felt cushion
TOTAL WEIGHT (nominal average)	4.5 oz - 5.2 oz/square foot
TOTAL THICKNESS (nominal average)	0.205 inches (5mm nominal)
DIMENSIONS	18 x 36 inch plank modules
PACKAGING	16 modules per box – 72 square feet

ENVIRONMENTAL ATTRIBUTES

RECYCLED CONTENT	45% post-consumer
LEED SCORECARD	IEQ 4.1 and IEQ 4.3
NSF/ANSI 140 CERTIFICATION	platinum

TESTING

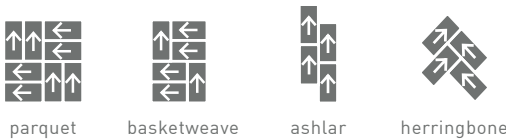
FLOORING RADIANT PANEL	class 1
SMOKE DENSITY	less than 450 (flaming & non-flaming)
ELECTROSTATIC PROPENSITY	less than 3.0 kv
COLORFASTNESS TO LIGHT	rating of 4.0 or greater
COLORFASTNESS TO CROCKING	rating of 4.0 or greater
WATER REPELLENCY	rating of 4.0 or greater
APPEARANCE RETENTION	4.0 or greater
SLIP RESISTANCE	Complies with ADA Guidelines for level surface NFSI Certified High-Traction

THERMAL INSULATION	0.73
NOISE REDUCTION COEFFICIENT	NRC Rating: 0.30*
IMPACT INSULATION CLASSIFICATION	IIC Rating: 64**
STAIN RESISTANCE	resists most challenging stains
INDOOR AIR QUALITY CERTIFICATION	CRI Green Label Plus™

ADHESIVE

Kinetex adhesive (full-spread pressure-sensitive)  
(optional) PreFix® pre-applied releasable adhesive

INSTALLATION METHODS





kinetex

18"x36" MODULAR



P.O. BOX 2207  
DALTON, GA 30722  
P 800 241 4586  
F 706 275 4433  
JJFLOORING.COM

carpet | lvt | kinetex



**FLOORING**  
A DIVISION OF ENGINEERED FLOORS