

# FLOORING SOLUTIONS STUDENT HOUSING

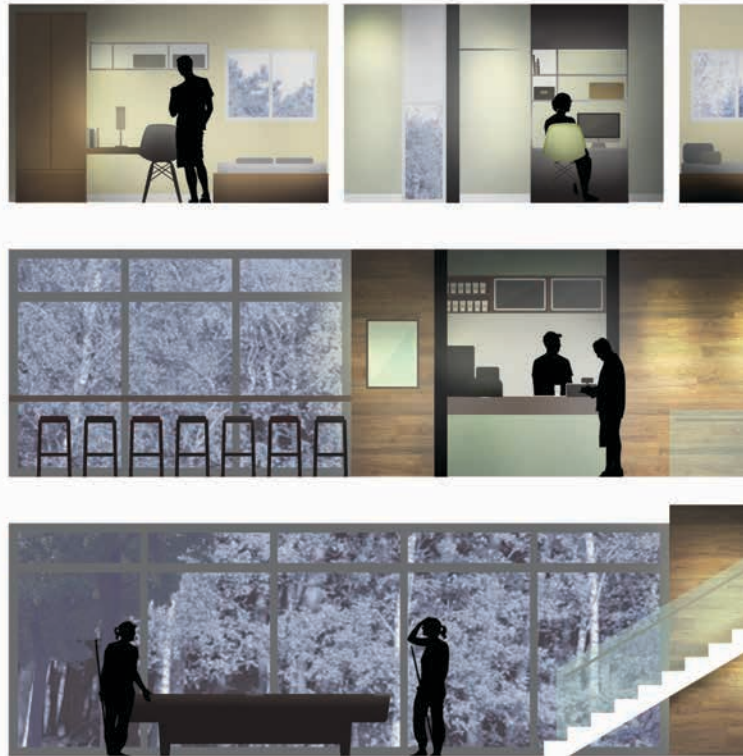


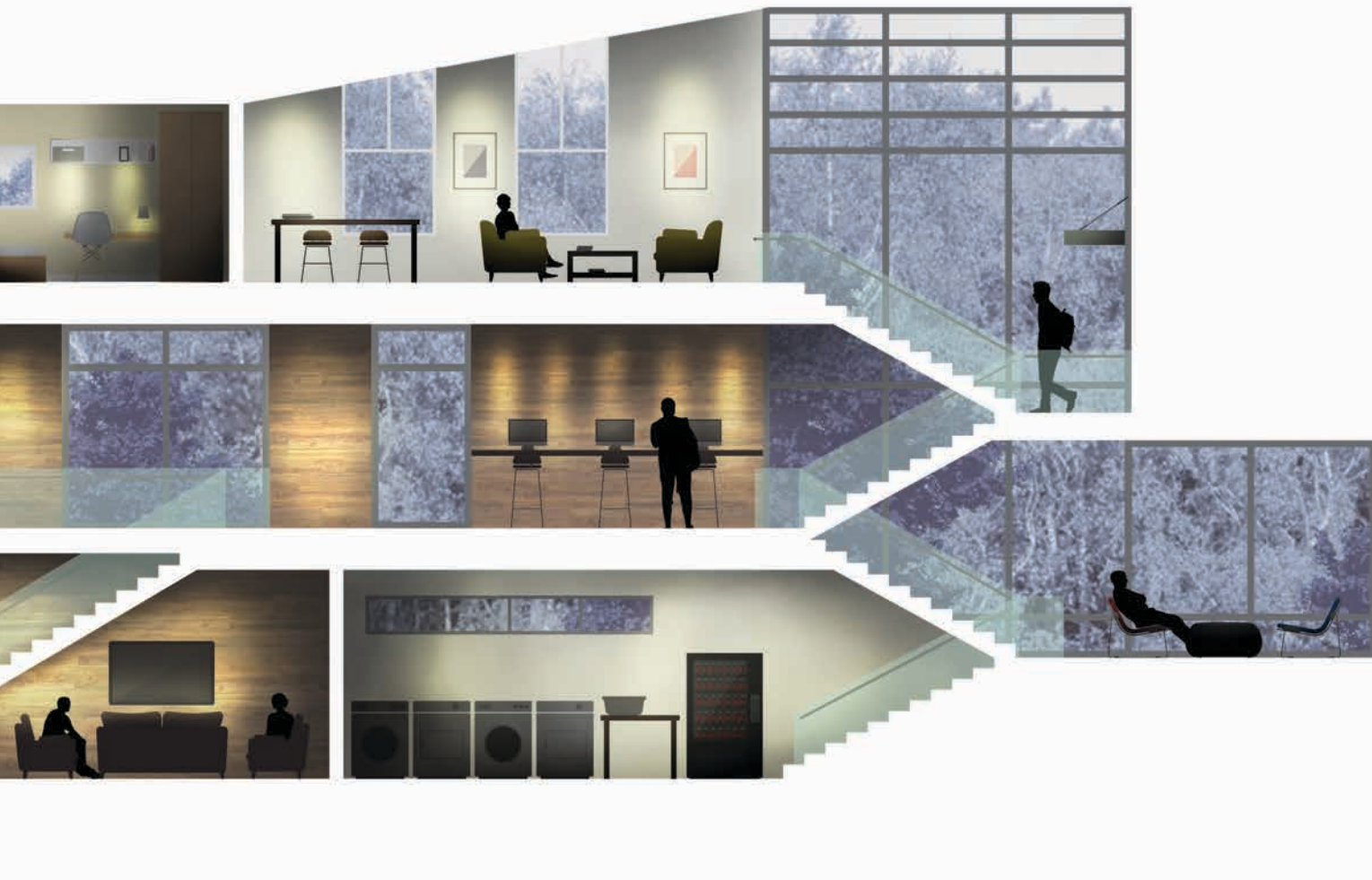
INVISION kinetex

---

Established in 1957, J+J Flooring Group is a leading manufacturer of commercial specified flooring. With our two brands – Invision broadloom and modular carpet and Kinetex textile composite flooring – we provide a range of product and service solutions to meet the needs of learning and living environments.

---





Sophisticated, stylish and smart. Today's student housing options are unlike anything experienced by previous generations. On and off campus, students are being wooed with residences that look like resorts, feel like home and are designed with their study habits and comfort in mind. From hotel-like living spaces to amenity-rich community centers and all the media lounges, game rooms, fitness centers, computer labs and corridors in between, J+J Flooring Group offers a wide array of soft-surface flooring options to help you achieve your design goals while delivering the quality, performance, durability and value that owners and operators seek.







Cover: Invision *Conspiracy*.  
This page: Invision *Philosophy*

## Live, Learn, Relax

Today's college students are the most technologically sophisticated generation in history. When they feel good about where they're living, they take to social media and spread the word. Spaces with a modern and lofty appeal, that feel safe and secure, provide the right acoustic barriers to support distraction-free studying and create a comfy environment in which to live and learn – now, that's something to Tweet about.



# INVISION

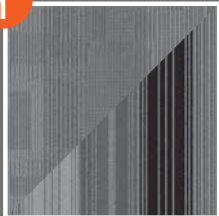
## Unbeatable Flexibility With Invision

J+J Flooring Group has been manufacturing commercial carpet for more than 55 years. With our respected carpet brand, Invision, we bring you an unbeatable array of flooring options, allowing you to coordinate colors and patterns across broadloom and modular offerings and performance-match products to the needs of each space. From our Goods to Go Quick Ship program featuring our most popular styles and colors, to technologies that protect your carpet investment, to walk-off tiles that help keep building entries clean and dry, Invision flooring solutions meet the unique needs of student housing facilities.

## Student Union

Invision's Student Union program allows you to easily select a pattern from our designs of subtle to bold options and select your colors from our palette of the top 15 most used collegiate colors to create a flooring that expressly reflects your school's brand.

Step  
1



Select Your Pattern

Step  
2



Select Your School Colors

Step  
3



Contact Your J+J Flooring Group Sales Representative To Order Your Custom Sample.

*Invision Legend (Student Union)*















# kinetex

## Unparalleled Performance With Kinetex

Kinetex is an advanced, textile composite flooring that combines key attributes of soft-surface floor covering with the long-wearing performance characteristics of hard-surface flooring. It is one of the most extensively tested flooring products ever introduced and an excellent choice for living/learning environments. In addition to its human-centered qualities and highly functional design, Kinetex offers a reduced environmental footprint compared to traditional hard-surface options.

Kinetex is constructed of an innovative face fiber and cushioned backing which, combined, create a versatile, lightweight, soft-surface flooring design with the long-wearing performance characteristics of vinyl and rubber. Liquid beads on top, making spills easy to see and quick to clean.

Kinetex Velocity and Flash

## High-Achieving Flooring

We can't pair the perfect roommates, but we can offer a variety of flooring solutions to meet your requirements for aesthetics and functionality in a student housing complex.

### PERFORMANCE

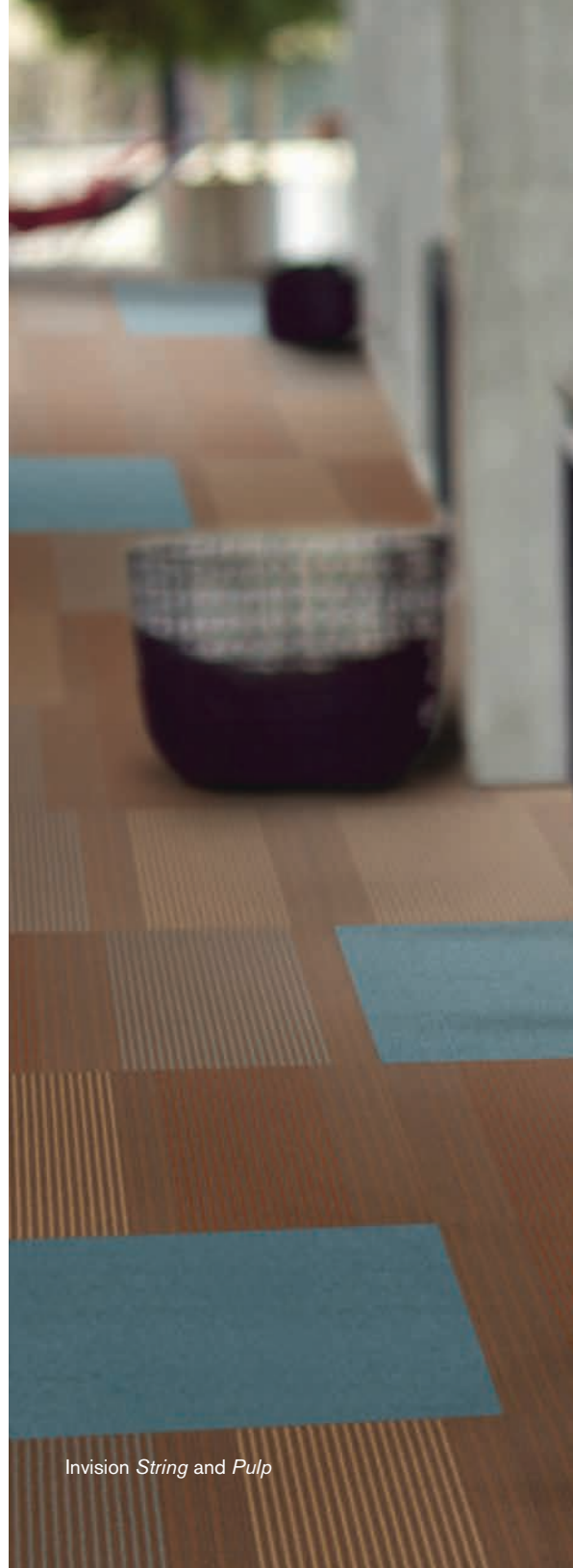
Backed by lifetime performance warranties, J+J Flooring Group's Invision broadloom and modular carpet as well as our Kinetex textile composite flooring are engineered to withstand the daily comings, goings and activities of busy college students.

### ACOUSTICS

The social aspect of living in a student housing facility is an important part of the college experience. Equally important is the ability to study without noise distractions. Kinetex textile composite flooring offers one of the highest Noise Reduction Coefficients (NRC) and Impact Insulation Classifications (IIC) ratings of any commercial flooring product. This unparalleled acoustic performance results in dramatic reductions in airborne and structure borne noise, effectively promoting enhanced learning.

### COMFORT

More comfortable to walk, stand and sit on than hard-surface flooring, Invision carpet solutions and Kinetex textile composite flooring provide a soft, textile surface that instantly makes any space feel warmer and more inviting. Whether students are working in a computer lab, exercising in a fitness center or just hanging out with friends in their rooms, Invision carpet products and Kinetex textile composite flooring help them do it in greater comfort.



*Invision String and Pulp*













This page: Invision *Emerge* and *Evolve*  
Back cover: Kinetex *Flash*

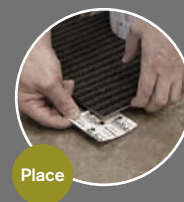
## Mix, Match and Modernize

Whether you're building new student housing or renovating existing properties to keep them competitive and relevant, our array of carpet tiles and textile composite flooring allows you the freedom to mix-and-match patterns and colors to create unique flooring designs and modernize the spaces. These modular solutions are also easy to remove and replace, allowing for simple and cost-effective updates.

## Easy In, Easy Out With TileTabs®



Peel



Place



Press

Easy in and easy out - J+J Flooring Group's TileTabs offer a time saving solution for carpet tile installation. Perfect for in-room installations, TileTabs are high tack adhesive tabs that connect Invision carpet tiles together, resulting in a continual layer that gently grips existing flooring. Just peel, place, & press! (TileTabs should not be used with Kinetex products)



## Good for Your Campus, Good for the Environment

As a certified zero waste to landfill manufacturer, we go to great lengths to ensure that every product we craft meets our high standards for quality and environmental sustainability. In addition, we stringently comply to our ISO 14001 certified environmental management system with a corporate commitment to reducing pollution and minimizing the company's environmental impact on air, water, and land.

### INVISION CARPET

- EPDs available for 98% of our Invision products
- NSF 140 Platinum and Gold Certifications
- Contains Pre-Consumer and Post-Consumer Recycled Content

### KINETEX TEXTILE COMPOSITE FLOORING

- EPDs available for 100% of Kinetex products
- HPDs available for 100% of Kinetex products
- NSF 140 Platinum Certified
- Contains more than 57% recycled content
- Closed-loop Recyclable
- Named Top Ten Green Building Product for 2014 by BuildingGreen, Inc







