

STORYLINE

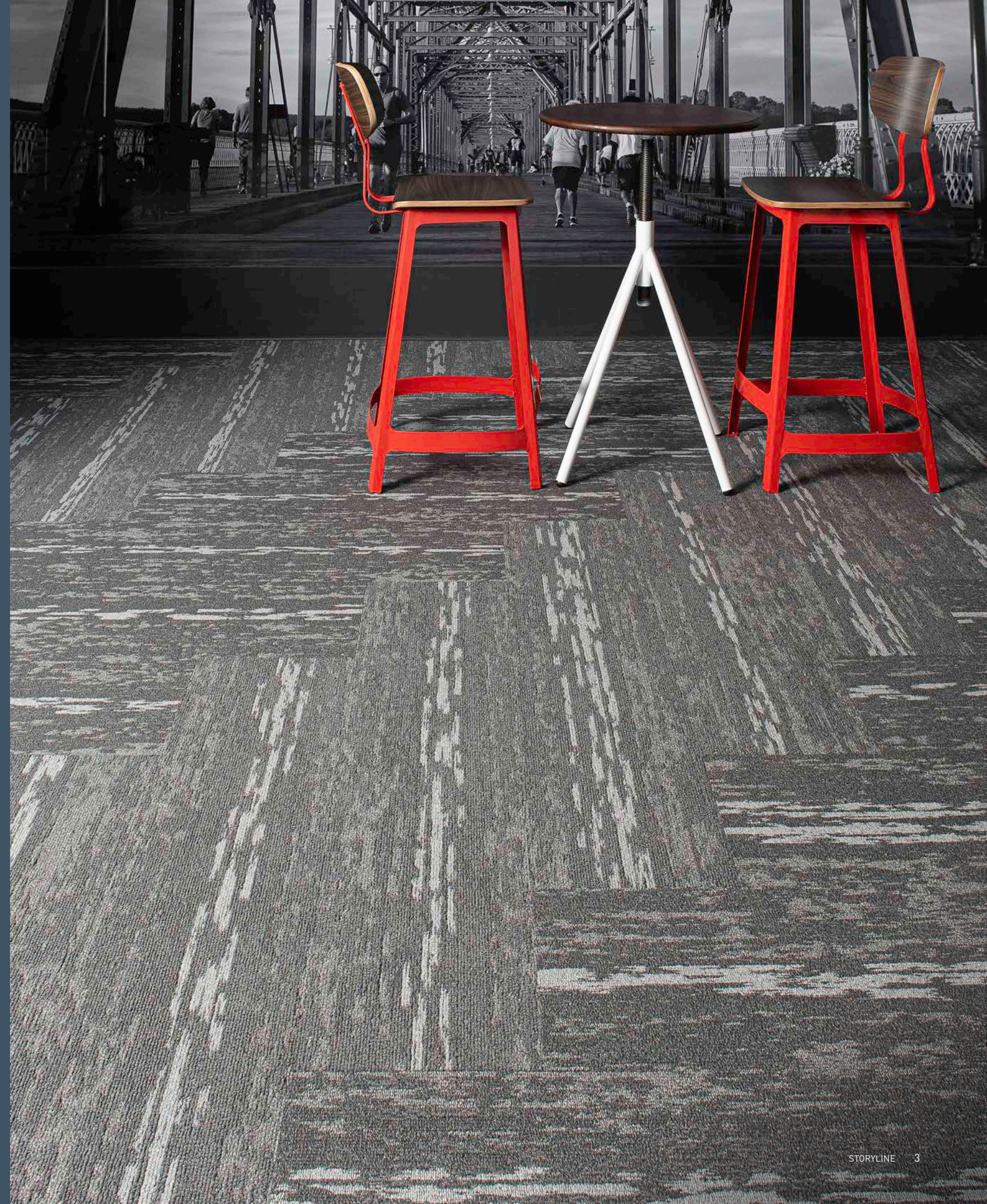


J+J FLOORING

From our establishment in 1957, we have become one of the oldest exclusive manufacturers of *commercial flooring* in the United States. As one of the largest privately held mills, our FAMILY-OWNERSHIP provides a *heritage* of proven performance and expansive industry knowledge. Most importantly, our focus has always been on *people...* ensuring them that our products deliver the highest levels of **BEAUTY**, **PERFORMANCE** and **DEPENDABILITY**.

carpet | lvt | **kinetex**

(cover) Storyline *Drama*, ashlar.
(right) Storyline *Analogy*, herringbone.





Storyline Narration, parquet



Storyline Drama, ashlar

storyline 7589



style 7589
color 3005
drama



style 7589
color 3006
action



style 7589
color 3007
genre



style 7589
color 3008
prose



style 7589
color 3009
poem



style 7589
color 3010
antagonist



style 7589
color 3011
protagonist



style 7589
color 3012
narration



style 7589
color 3013
plot twist



style 7589
color 3014
point of view



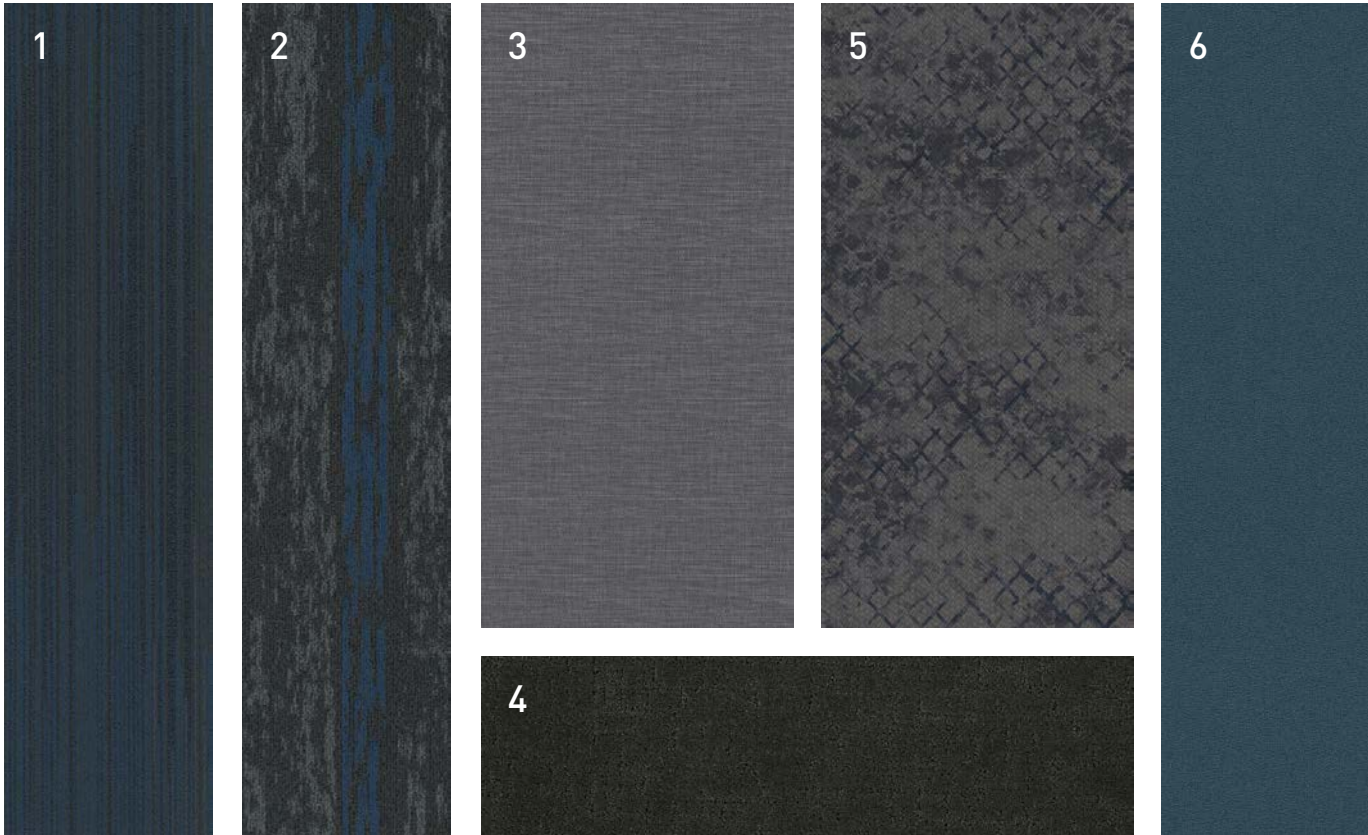
style 7589
color 3015
analogy



style 7589
color 3016
context



coordinating palette



Beyond the beauty of individual products, our flooring coordinates effortlessly with each other. This offering enables you to blend a range of designs with tonal simplicity to create palettes that reflect the demands of each unique space.

1	Narrative	7084	#2998 Epilogue	Modular
2	Storyline	7589	#3008 Prose	Modular
3	Tatami	V5003	#1023 Zen	LVT
4	Tussah	9144	#912 Ore	Broadloom
5	Brookstone	1846	#2930 Breezeway	Kinetex
6	Chroma	7031	#1976 Saturation	Modular

product details

FIBER

Encore® SD Ultima® (with recycled content)
Encore SD Ultima is specifically engineered to maximize appearance retention with exceptional color, performance, sustainability and practicality.

BACKINGS

Nexus® Modular

Nexus modular products can be installed in a variety of ways and are performance engineered to be visually appealing. In addition, they are designed to accommodate your long-term flooring budget.

- Manufactured in an ISO 14001 certified facility
- Contains pre-consumer recycled content and contributes to LEED
- Recyclable through the J+J Flooring's R4 Carpet Reclamation Program

MOISTURE

Are high levels of moisture in your concrete slab causing issues with your project’s floor covering? We can help.

- Nexus® Modular Carpet with TileTabs – 99% RH
- Cost-efficient
- Long-term performance
- Straightforward, easy-to-understand Lifetime warranty
- Requires no special floor preparation

Adhesive

Commercialon® Premium Modular Adhesive

A high strength acrylic latex-based carpet adhesive specifically formulated for bonding modular PVC backed carpet to the floor. This premium adhesive is for use with all Nexus Modular Tile products. This adhesive is guaranteed for the life of the installation when used in accordance with the J+J Flooring Carpet Installation Handbook. Commercialon Premium Modular Adhesive meets the CRI Low-VOC Emission Criteria, CRI ID# PSA-425402. Commercialon Premium Modular Adhesive is non toxic, has ultra-low odor and is antimicrobial in the dry state.

OPTIONAL:

TileTabs – High Tack Adhesive Tabs (modular only)

TECHNOLOGIES

ProTex® Anti-Soil Treatment

ProTex is a proprietary anti-soil treatment technology that is applied and bonded to the pile fiber to impede soiling and to improve cleanability. It is standard on all J+J Flooring products.

OPTIONAL:

ProSept® Antimicrobial

Sentir® Advanced Odor-Blocking Technology



Green Circle Certification

J+J Flooring strives to manage, and ultimately eliminate, waste in our manufacturing processes. Our steadfast commitment in the pursuit of Zero Waste to Landfill has earned us the industry-leading level of 95% waste diversion certification by a third-party certifier.

To learn more about our waste initiatives, please see our Sustainability Report online at jjflooring.com/sustainability



We're on it.

The J+J Flooring Group Premium Customer Experience.

Our Premium Customer Experience is a carefully crafted process by which we guarantee that our customers will get the products, services and the reliability they expect from us.

To learn more visit:

jjflooring.com/customer-experience/

jjflooring.com/customer-experience/

©2019 J+J Flooring Group, LLC - This unique design is protected under the U.S. Copyright Act of 1976. Any unauthorized copying or duplication of this design constitutes copyright infringement in violation of federal law.

Due to the unique visual characteristics of modular carpets, pattern repeats and pattern run-off seams may appear more noticeable than in broadloom carpets. Such visual characteristics do not constitute a manufacturing defect, and as such, should be considered when selecting modular carpet and its installation.

These photographs are representations of the installation for this modular product. Your modular installation may look different than these photos depending upon individual tile placement, lighting, and overall space layout, including furnishings. Final tile placement and the resulting visual is thus the customer's, and not J+J Flooring's responsibility.



style	storyline 7589 modular
construction	textured patterned loop
fiber type	100% Encore® SD Ultima® nylon with recycled content
dye method	100% solution dyed
ounce weight	19.0 oz/sy (644 grams/m²)
gauge	1/12 (4.72 rows/cm)
backing	Nexus® modular
size	12" x 48" (30.5 cm x 122.0 cm)
pattern repeat	n/a
total thickness (nominal average)	.25 inches (0.66 cm)
special technology	ProTex® anti-soil treatment
optional special technologies	ProSept® antimicrobial Sentir® advanced odor blocking treatment
physical testing	flooring radiant panel (class 1) pill test – (passes) smoke density (less than 450 flaming) static generation -(less than 3.5 kv) ADA compliance (compliant for accessible routes)
warranties	lifetime fiber performance for wear lifetime fiber performance for static lifetime stain removal lifetime colorfastness to light and atmospheric contaminants lifetime for tuft bind strength (edge ravel, yarn pulls, zippering) lifetime against delamination lifetime dimensional stability

modular installation methods

ashlar

basketweave

herringbone

parquet



FLOORING

A DIVISION OF ENGINEERED FLOORS

jjflooring.com

P.O. Box 2207
Dalton, GA 30722
p 800 241 4586
f 706 275 4433

carpet | lvt | kinetex
