

TWEED



J+J FLOORING

From our establishment in 1957, we have become one of the oldest exclusive manufacturers of *commercial flooring* in the United States. As one of the largest privately held mills, our FAMILY-OWNERSHIP provides a *heritage* of proven performance and expansive industry knowledge. Most importantly, our focus has always been on *people...* ensuring them that our products deliver the highest levels of BEAUTY, PERFORMANCE and DEPENDABILITY.

carpet | lvt | kinetex

(cover) *Tweed Pleat*, ashlar.
(right) *Tweed Stitch*, ashlar.





Tweed *Pleat*, herringbone with Boucle *Knit*, ashlar.



Tweed *Pleat*, herringbone.



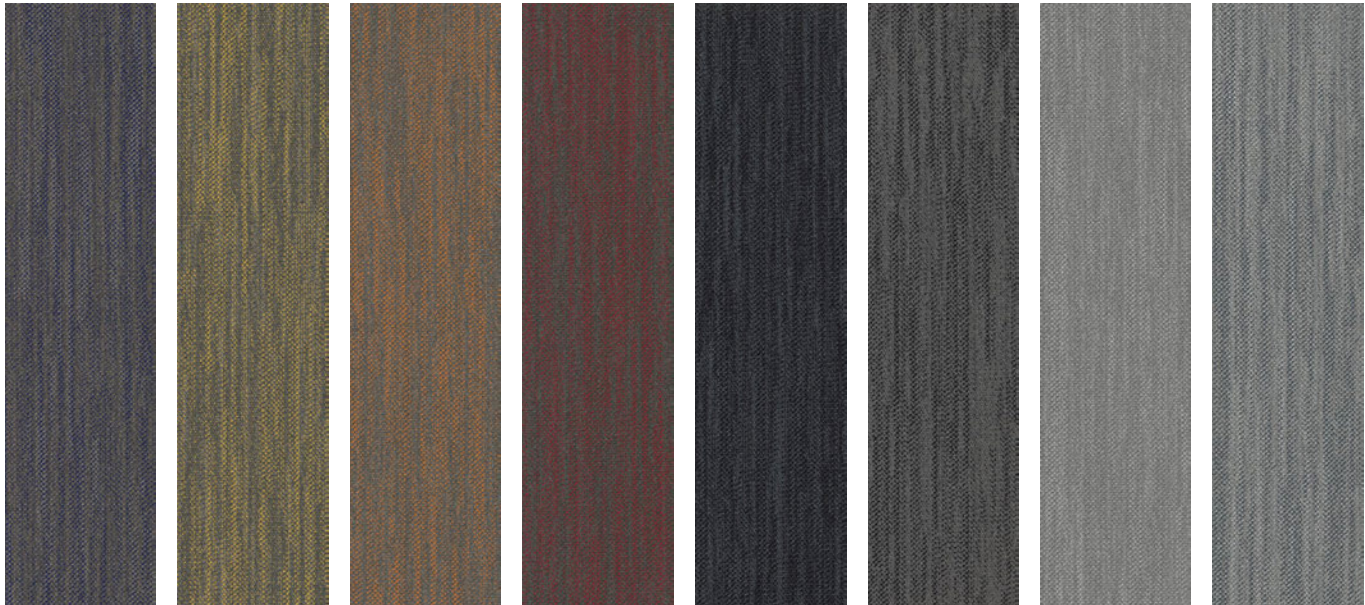
Tweed *Pleat*, herringbone.



tweed 7083



style 7083 color 2978 stitch	style 7083 color 2979 pleat	style 7083 color 2980 hem	style 7083 color 2981 needle	style 7083 color 2982 tailor	style 7083 color 2983 serge	style 7083 color 2984 weft	style 7083 color 2985 woolen	style 7083 color 2986 measure
------------------------------------	-----------------------------------	---------------------------------	------------------------------------	------------------------------------	-----------------------------------	----------------------------------	------------------------------------	-------------------------------------



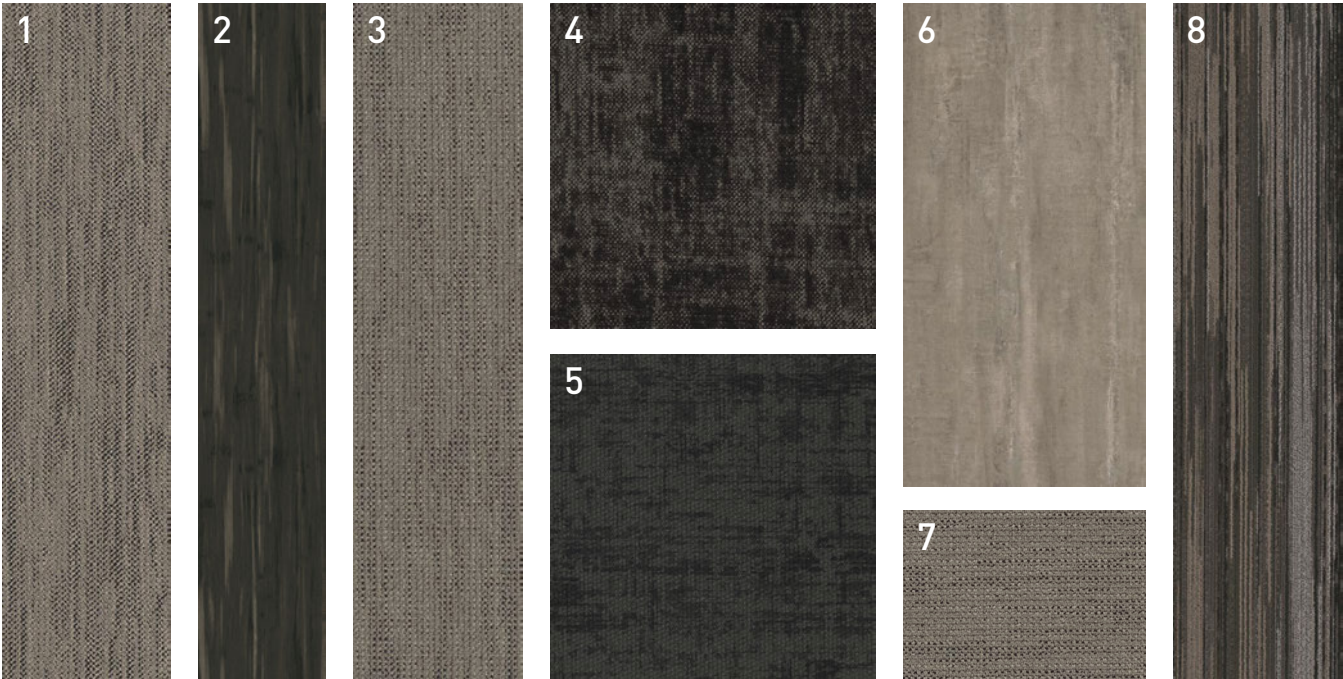
style 7083 color 2987 selvage	style 7083 color 2988 thread	style 7083 color 2989 placket	style 7083 color 2990 dart	style 7083 color 2991 seam	style 7083 color 2992 flannel	style 7083 color 2993 thimble	style 7083 color 2994 suit
-------------------------------------	------------------------------------	-------------------------------------	----------------------------------	----------------------------------	-------------------------------------	-------------------------------------	----------------------------------

Tweed Hem, herringbone



Tweed Stitch, ashlar with Modern Classics Annie, ashlar

coordinating palette



Beyond the beauty of individual products, our flooring coordinates effortlessly with each other. This offering enables you to blend a range of designs with tonal simplicity to create palettes that reflect the demands of each unique space.

1	Tweed	7588	#7083 Stitch	Modular
2	Modern Classics	V5002	#1029 Annie	LVT
3	Boucle	7081	#2703 Texture	Modular
4	Fractured Plaid	7587	#2873 Calico	Modular
5	Analog Mono	1822	#1555 Equivalent	Kinetex
6	Legend	V5010	#1059 Fiction	LVT
7	Boucle	3081	#2703 Texture	Broadloom
8	Stria	7585	#2741 Merino	Modular

product details

FIBER

Encore® SD Ultima® (with recycled content)
Encore SD Ultima is specifically engineered to maximize appearance retention with exceptional color, performance, sustainability and practicality.

BACKINGS

Nexus® Modular
Nexus modular products can be installed in a variety of ways and are performance engineered to be visually appealing. In addition, they are designed to accommodate your long-term flooring budget.

- Manufactured in an ISO 14001 certified facility
- Contains pre-consumer recycled content and contributes to LEED
- Recyclable through the J+J Flooring's R4 Carpet Reclamation Program

MOISTURE

Are high levels of moisture in your concrete slab causing issues with your project’s floor covering? We can help.

- Nexus® Modular Carpet with TileTabs – 99% RH
- Cost-efficient
- Long-term performance
- Straightforward, easy-to-understand Lifetime warranty
- Requires no special floor preparation

Adhesive

Commercialon® Premium Modular Adhesive
A high strength acrylic latex-based carpet adhesive specifically formulated for bonding modular PVC backed carpet to the floor. This premium adhesive is for use with all Nexus Modular Tile products. This adhesive is guaranteed for the life of the installation when used in accordance with the J+J Flooring Carpet Installation Handbook. Commercialon Premium Modular Adhesive meets the CRI Low-VOC Emission Criteria, CRI ID# PSA-425402. Commercialon Premium Modular Adhesive is non toxic, has ultra-low odor and is antimicrobial in the dry state.

OPTIONAL:

TileTabs – High Tack Adhesive Tabs (modular only)

TECHNOLOGIES

ProTex® Anti-Soil Treatment
ProTex is a proprietary anti-soil treatment technology that is applied and bonded to the pile fiber to impede soiling and to improve cleanability. It is standard on all J+J Flooring products.

OPTIONAL:

ProSept® Antimicrobial

Sentir® Advanced Odor-Blocking Technology



Green Circle Certification

J+J Flooring strives to manage, and ultimately eliminate, waste in our manufacturing processes. Our steadfast commitment in the pursuit of Zero Waste to Landfill has earned us the industry-leading level of 95% waste diversion certification by a third-party certifier.

To learn more about our waste initiatives, please see our Sustainability Report online at jjflooring.com/sustainability



We're on it.
The J+J Flooring Group Premium Customer Experience.

Our Premium Customer Experience is a carefully crafted process by which we guarantee that our customers will get the products, services and the reliability they expect from us.

To learn more visit:
jjflooring.com/customer-experience/

**Max RH, pH:
Installed without
Commercialon®
Premium Sealer**

99% RH, pH 11
(Tiletabs)
--
97% RH, pH 11
(Commercialon)

Commercialon®

ProTex®

ProSept®

Sentir®

©2020 J+J Flooring Group, LLC - This unique design is protected under the U.S. Copyright Act of 1976. Any unauthorized copying or duplication of this design constitutes copyright infringement in violation of federal law.

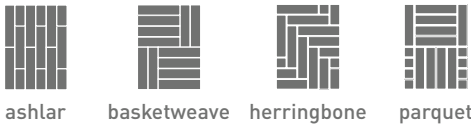
Due to the unique visual characteristics of modular carpets, pattern repeats and pattern run-off seams may appear more noticeable than in broadloom carpets. Such visual characteristics do not constitute a manufacturing defect, and as such, should be considered when selecting modular carpet and its installation.

These photographs are representations of the installation for this modular product. Your modular installation may look different than these photos depending upon individual tile placement, lighting, and overall space layout, including furnishings. Final tile placement and the resulting visual is thus the customer's, and not J+J Flooring's responsibility.



style	tweed 7083 modular
construction	textured loop
fiber type	100% Encore® SD Ultima® nylon with recycled content
dye method	100% solution dyed
ounce weight	25.0 oz/sy (847 grams/m²)
gauge	1/10 (3.94 rows/cm)
backing	Nexus® modular
size	12" x 48" (30.5 cm x 122.0 cm)
pattern repeat	n/a
total thickness (nominal average)	.25 inches (0.66 cm)
special technology	ProTex® anti-soil treatment
optional special technologies	ProSept® antimicrobial Sentir® advanced odor blocking treatment
physical testing	flooring radiant panel (class 1) pill test – (passes) smoke density (less than 450 flaming) static generation -(less than 3.5 kv) ADA compliance (compliant for accessible routes)
warranties	lifetime fiber performance for wear lifetime fiber performance for static lifetime stain removal lifetime colorfastness to light and atmospheric contaminants lifetime for tuft bind strength (edge ravel, yarn pulls, zippering) lifetime against delamination lifetime dimensional stability

modular installation methods





FLOORING

A DIVISION OF ENGINEERED FLOORS

jjflooring.com

P.O. Box 2207
Dalton, GA 30722
p 800 241 4586
f 706 275 4433

carpet | lvt | kinetex
