

kinetex
VELOCITY

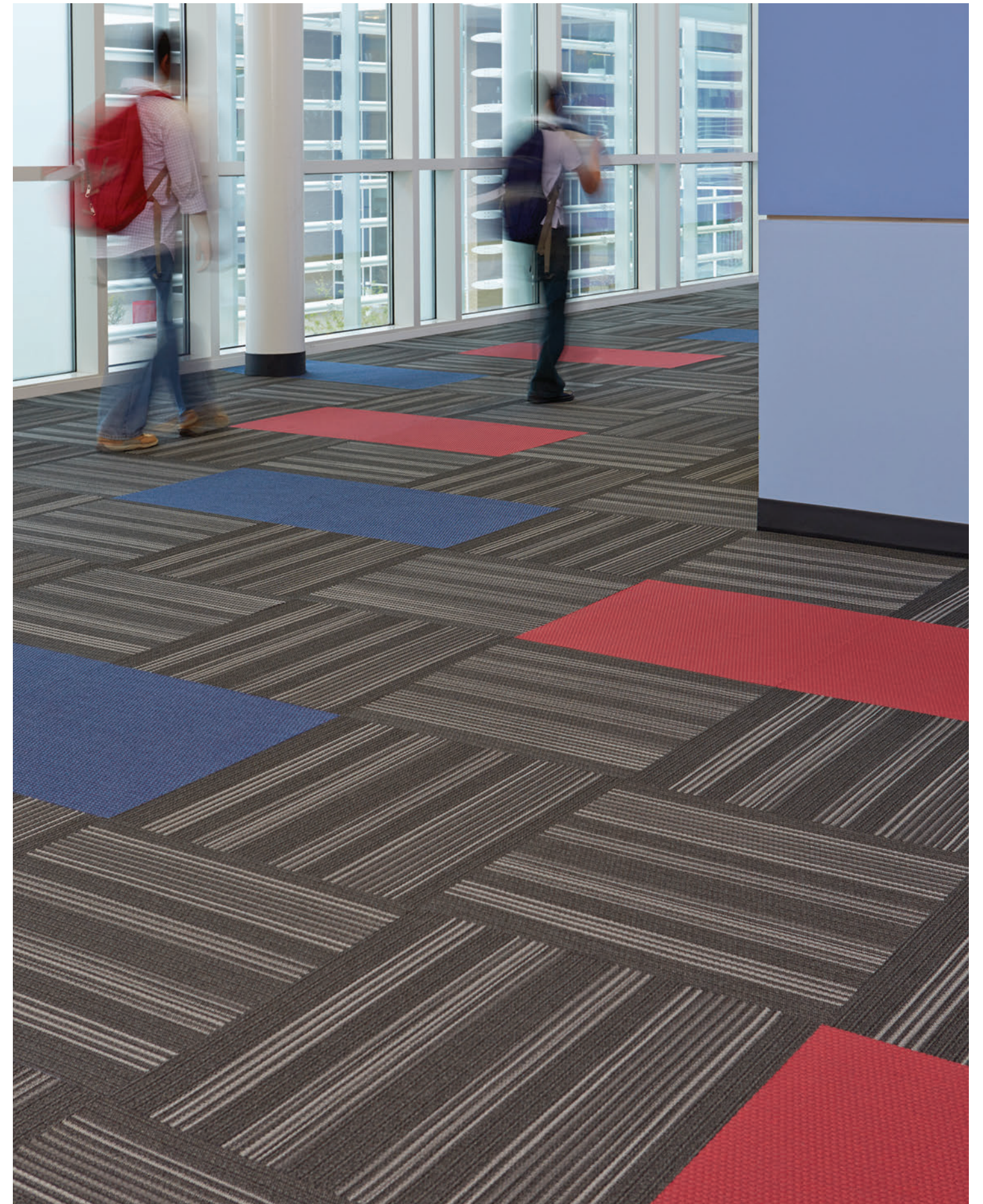


J+J FLOORING

From our establishment in 1957, we have become one of the oldest exclusive manufacturers of *commercial flooring* in the United States. As one of the largest privately held mills, our FAMILY-OWNERSHIP provides a *heritage* of proven performance and expansive industry knowledge. Most importantly, our focus has always been on *people...* ensuring them that our products deliver the highest levels of BEAUTY, PERFORMANCE and DEPENDABILITY.

carpet | lvt | kinetex

[cover] Velocity Move, quarter turn.
[right] Velocity Move with Pop Rajo and Azul, quarter turn.





Velocity Vector, quarter turn.

velocity 1814



style 1814
color 1603
position



style 1814
color 1604
direction



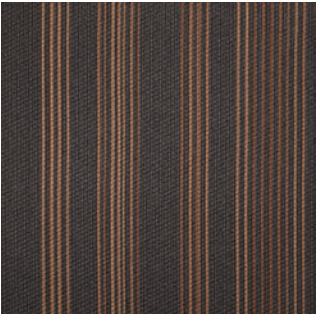
style 1814
color 1605
magnitude



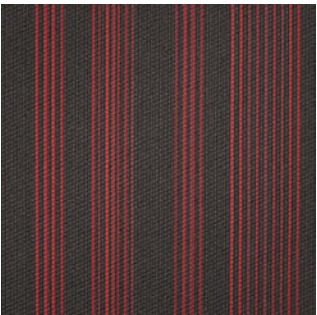
style 1814
color 1607
reaction



style 1814
color 1608
move



style 1814
color 1609
constant



style 1814
color 1610
vector



Velocity Direction and Propel II Forge, quarter turn.

where to use kinetex

Healthcare

Acute care hospitals, medical office buildings, urgent care clinics, outpatient surgery centers, outpatient physical therapy/rehab centers, outpatient imaging centers, etc.

- Cafeteria, dining areas
- Chapel
- Computer room
- Corridors
- Diagnostic imaging suites
- Dry physical therapy
- Elevators
- Exam/procedure rooms
- Gift shops
- Hyperbaric treatment rooms
- Lobbies
- Nursing stations
- Offices/administration / conference rooms
- Patient rooms
- Pharmacy
- Ramps/ramped corridors
- Staff lounge
- Waiting rooms

Education

Early childhood development centers, preschool, k-12, higher education

- Auditoriums
- Classrooms/lecture halls
- Computer classrooms
- Dormitory rooms
- Food service areas
- Multipurpose rooms/cafeterium
- Ramps/ramped corridors
- Faculty/administrative offices
- Faculty lounge
- Libraries

Commercial Offices

Offices, call centers

- Offices
- Waiting areas
- Corridors
- Conference rooms
- Copy/mail rooms
- Break rooms
- Computer rooms

Fitness Centers

Health Clubs/Gyms

- Cardio Centers
- Stationary Weight Centers
- Dry Locker Room Areas
- Snack Bars
- Offices

Retail / Mercantile

Wholesale/Retail merchants

- Checkout/cash wrap
- Dressing rooms
- Sales floor
- Offices
- Employee break areas

Hospitality

Hotels

- Corridors
- Conference rooms
- Guest rooms
- Dining rooms
- Business centers
- Activity rooms
- Common areas
- Computer rooms

Transportation /

Public Venues

Airports, bus/train stations, performing arts centers, athletic arenas

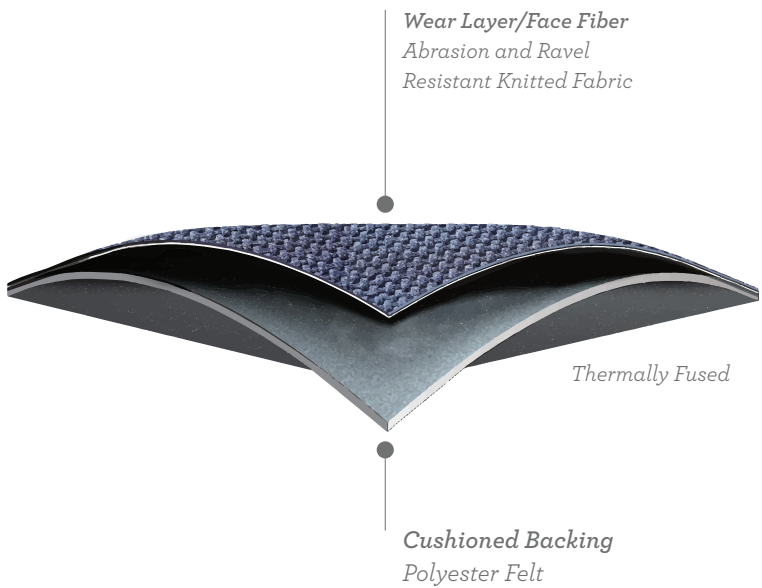
- Ticketing/baggage claim
- Concourses
- Jetways
- Conference rooms
- Waiting areas
- Administrative offices/ATC
- Airline clubs/USO
- Chapel
- Large public spaces
- Theaters

kinetex overview

Kinetex® is an advanced textile composite flooring that combines key attributes of soft-surface floor covering with the long-wearing performance characteristics of hard-surface flooring. Created as a unique floor covering alternative to hard-surface products, J+J Flooring's Kinetex encompasses an unprecedented range of performance attributes for retail, healthcare, education and institutional environments. In addition to its human-centered qualities and highly functional design, Kinetex offers a reduced environmental footprint compared to traditional hard-surface options.

The key to the high-performance attributes of Kinetex lies within its construction. Each layer, when used together, creates versatile, lightweight, soft-surface flooring designed with qualities parallel to that of hard-surface.

Kinetex Construction



Performance by the Multitudes (and for the Multitudes)

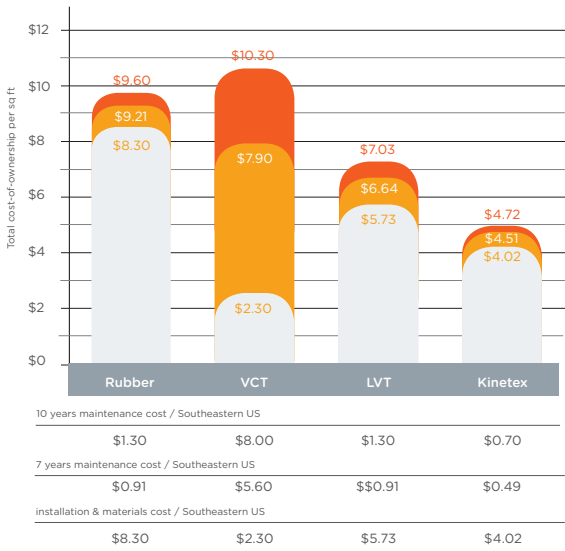
A growing body of research correlates certain aspects of the built environment, such as acoustics, indoor air quality, glare and ergonomics, with measurable outcomes related to productivity, health, safety and effectiveness. Flooring can play a pivotal role in achieving positive outcomes when positioning these factors in many institutional environments. Combined with the practiced approach of evidence-based design, Kinetex provides a solid foundation for performance driven settings.

1 | Durability

With outstanding dimensional stability and crush resistance, Kinetex has withstood over 5 million foot traffic events with minimal wear at a popular Florida-based entertainment venue. That equates to more than the total number of people who have attended every Super Bowl since the first game, over 50 years ago.

2 | Maintenance

Kinetex cleans easily with vacuuming, encapsulation cleaning or hot water extraction (in areas prone to heavy soiling). It retains less water than carpet and therefore dries quickly. Kinetex resists the most challenging staining agents, such as blood, urine, Betadine and hand sanitizers. The maintenance of Kinetex is simple and more cost efficient compared to that of hard-surface flooring. There is no need for stripping, wear layer application or buffing — saving time and materials.



The costs shown reflect average SE United States costs, which may vary depending upon the cost of materials, the cost of installation and the cost of maintenance. The relative costs will remain approximately the same for most geographic locations.

When sanitizing applied pattern products, a peroxide-based solution such as Vital Oxide® should be used. Bleach solutions may be used to sanitize products without applied pattern when using the recommended bleach/water solution in accordance with the J+J Flooring maintenance guidelines.

Please see the Kinetex maintenance instructions for full recommendations concerning schedules and cleaning supplies for preventative, daily and interim maintenance.

3 | Health

Kinetex easily surpasses California's 01350 requirements for low-VOC emissions and substantially minimizes airborne particles by sequestering common allergens, irritants and dust. In addition, Kinetex is easily sanitized and has very short drying time when cleaned.

4 | Safety

Kinetex's unique construction creates one of the most slip resistant flooring surfaces ever tested, wet or dry — reducing the potential for slip and fall injuries. It has been certified by the National Floor Safety Institute (NFSI) as a high traction surface. Its unique low profile also has minimal rolling resistance, potentially reducing injuries from pushing and pulling

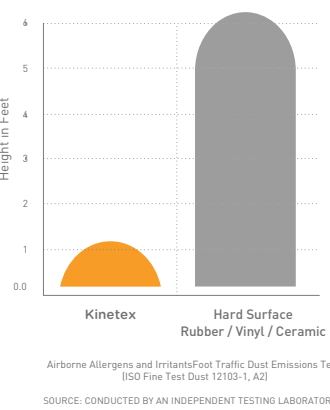
5 | Acoustics

Kinetex offers one of the highest Noise Reduction Coefficients (.30) and Impact Insulation Classifications (64) of any commercial flooring product. This unparalleled acoustic performance results in dramatic reductions in both airborne and structure borne noise. Its excellent Impact Insulation Classification effectively promotes greater voice recognition, fewer mistakes, less vocal strain, enhanced learning and improved occupant perception.

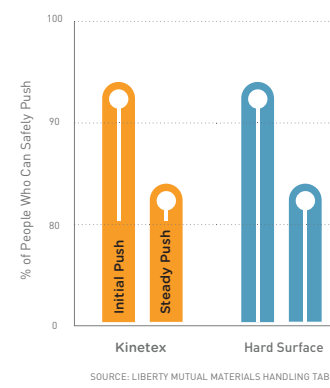
Life Cycle Cost Comparison– The True Cost of Ownership

Kinetex has a significant cost advantage over hard-surface floors, a critical factor at a time when administrators, managers and others are operating their facilities on greatly reduced budgets. The life cycle cost of ownership — defined as the cost of flooring materials, installation and maintenance over a seven to 10-year period — for Kinetex is approximately 51% less than rubber flooring, 33% less than LVT flooring and 55% less than VCT flooring. This offers substantial savings over the life span of the flooring installation.

Breathing Zone Analysis



Roller Mobility Safety



6 | High-Tolerance Solution for Moisture Transmission in Concrete

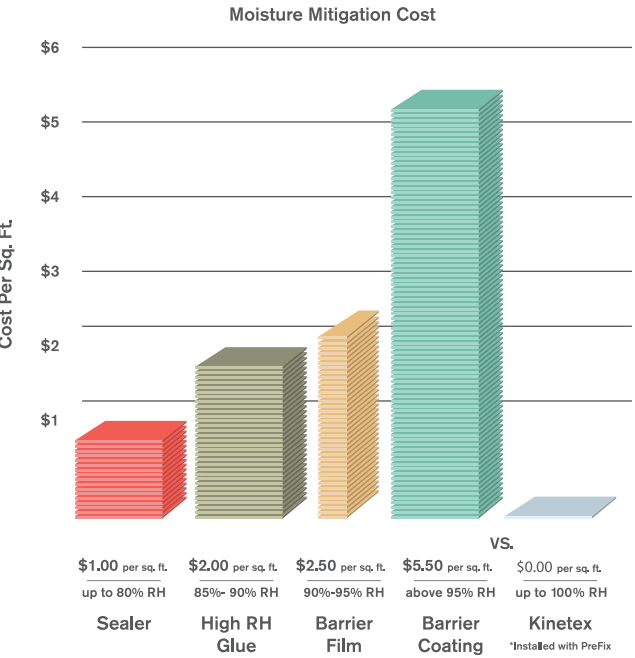
If high moisture emission is discovered during concrete moisture testing, then proper precautions should be taken to prevent flooring system failures.

Kinetex will perform on elevated RH slabs.

| Installation System | Max RH, pH without Commercialon® Premium Sealer | Max RH, pH with Commercialon® Premium Sealer |
|-----------------------|--|--|
| Kinetex with Adhesive | 95% RH, pH 9 | 99% RH, pH 11 |
| PreFix Kinetex* | 100% RH*, pH 11 No Testing or Commercialon® Premium Sealer Required | |

*There must be no standing water or visible condensation.

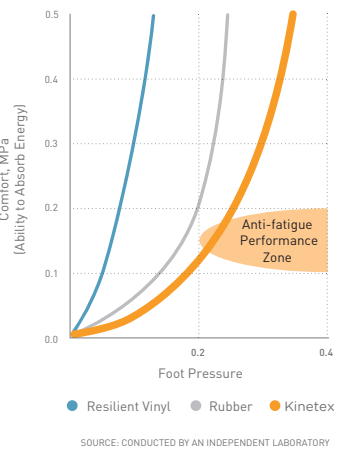
The breathable nature of this product allows moisture to pass through the backing rather than trap it underneath. This method of vapor transmission allows Kinetex to be installed without costly moisture mitigation.



7 | Comfort

Kinetex's high-density backing and soft textile surface provides exceptional anti-fatigue properties along with minimal rolling resistance. It embodies the potential to absorb energy and reduce both repetitive foot stress injuries as well as injuries related to walking and moving frequently from place to place.

Cushioning Properties Related to Standing Fatigue



8 | Sustainability

Due to its lower mass, Kinetex has a 50 percent lower environmental impact compared to other commercial floorings. With more than 55 percent recycled content, Kinetex is NSF/ANSI-140 Platinum certified. In addition, Kinetex is easily recycled into the next generation of itself - as easily as an aluminum can. All Kinetex products also carry a Third Party verified DECLARE label, affirming Kinetex as both a simple and sustainable flooring solution.

Kinetex Installation

Installing Kinetex is as easy as traditional modular carpet, however special attention should be applied until installers gain experience with module placement. Installers should perform site and material conditioning, surface preparation, and concrete pH and moisture testing as if they were installing J+J Flooring carpet modules. Because it is such a lightweight material the modules cut very easily, reducing installation time. Kinetex uses J+J Flooring's proven adhesive systems with lifetime performance warranties.

PreFix®

All applied pattern Kinetex products feature PreFix Pre-Applied Releasable Adhesive. PreFix includes a release liner that easily peels away to reveal a series of pre-applied adhesive strips that securely anchor the Kinetex module in place. Products with PreFix will perform in elevated RH slabs up to 100% without sealer and no testing required with Commercialon Premium Sealer, allowing the flooring to be installed without costly moisture mitigation. PreFix offers a quick installation system, and while standard on applied pattern products, it can be added to non-applied pattern Kinetex products as an optional adhesive.

Kinetex Adhesive

Non-applied pattern Kinetex products feature the proven releasable spread system, Kinetex Adhesive. This adhesive is formulated for Kinetex textile composite flooring products and is formulated to bond the textile composite to the properly prepared substrates for the life of the installation. Products with Kinetex Adhesive will perform in elevated RH slabs up to 95% without sealer and up to 99% with Commercialon Premium Sealer.

Both PreFix and Kinetex Adhesive offer the flexibility to simply remove and replace individual modules if conditions warrant a quick fix.

Please see the Kinetex installation instructions for full installation details.

product details

ADHESIVES

Kinetex® Adhesive
By design, Kinetex uses J+J Flooring’s proven releasable Kinetex Adhesive with lifetime performance warranties. Because it is such a lightweight material, the modules cut very easily, reducing installation time. Kinetex also offers the flexibility to simply remove and replace individual modules if conditions warrant a quick fix.

ALTERNATE ADHESIVES


PreFix® Pre-Applied Releasable Adhesive
J+J PreFix, a quick installation for all Kinetex textile composite flooring products. The release liner easily peels away to reveal a series of pre-applied adhesive strips that securely anchor the Kinetex module in place.

WARRANTIES

We stand behind every aspect of Kinetex and extend certain lifetime warranties. Each warranty is covered for the useful life of the product, provided that installation and maintenance is in accordance with J+J Flooring’s Kinetex Installation Instructions.

- Wear Layer Warranties**
- Lifetime Product Performance
 - Lifetime Colorfastness to Light & Crocking
 - Lifetime Stain Removal
 - Lifetime Static Protection

- Backing Warranties**
- Lifetime Protection from Edge Ravel
 - Lifetime Protection from Delamination Failure
 - Lifetime Dimensional Stability

ACCOLADES

Kinetex is one of the most extensively tested flooring products to ever be introduced. In addition to its unprecedented range of performance attributes, the human-centered qualities and highly functional design have quickly garnered attention. Below is a list of current awards and recognitions that Kinetex has received.

- **2018 Mixology 18 Awards**
Product of the Year, Flooring (Tri-plex)
- **2015 Nightingale Award Gold, Hard Surface** (Umbra / Umbra Stripe)
- **2015 Best of NeoCon, Hard Surface – Silver Award** (Umbra / Umbra Stripe) (Contract Magazine)
- **2014 Top Ten Green Building Product** (BuildingGreen, Inc.)
- **2014 Greenstep Award** (Floorcovering Weekly)
- **2014 Grand Prize Winner for Product Innovations** (Buildings Magazine)
- **2014 Excellence in Product Development** (British Institute of Facilities Management)

corporate programs



Green Circle - Zero Waste to Landfill Operations Certification
We are proudly certified as a Zero Waste to Landfill manufacturer by GreenCircle Certified, LLC., a prominent third-party certifier of environmental claims. We are the first commercial flooring manufacturer in the United States to achieve this landfill free status and the first company in the industry to have its waste diversion efforts audited and verified by a recognized, third-party certifier.

To learn more about zero waste or our other initiatives see our sustainability progress report online at jjflooring.com/sustainability


We're on it.
The J+J Flooring Premium Customer Experience.

Our Premium Customer Experience is a carefully crafted process by which we guarantee that our customers will get the products, services and the reliability they expect from us.

To learn more visit jjflooring.com/customer-experience

©2019 J+J Flooring Group, LLC - This unique design is protected under the U.S. Copyright Act of 1976. Any unauthorized copying or duplication of this design constitutes copyright infringement in violation of federal law.

Due to the unique visual characteristics of modular carpets, pattern repeats and pattern run-off seams may appear more noticeable than in broadloom carpets. Such visual characteristics do not constitute a manufacturing defect, and as such, should be considered when selecting modular carpet and its installation.

These photographs are representations of the installation for this modular product. Your modular installation may look different than these photos depending upon individual tile placement, lighting, and overall space layout, including furnishings. Final tile placement and the resulting visual is thus the customer’s, and not J+J Flooring Group’s responsibility.


*NRC rating is a measure of the effectiveness of a material in absorbing sound. The higher the NRC rating, the greater the ability of the flooring product to absorb airborne noise. Independent laboratory testing of Kinetex has shown an average NRC rating of 0.33 (bare concrete flooring will typically provide a NRC Rating of 0.015).

**IIC is a rating of the insulation from impact noise. The higher the IIC rating, the greater the sound insulation. Independent laboratory testing of Kinetex has shown an average IIC Rating of .64 (bare concrete flooring will typically provide an IIC Rating of 34) NOTE: Test results and testing laboratory will vary, and the above information is not guaranteed.



| | |
|-----------------------------------|--|
| style | velocity 1814 modular |
| Physical Characteristics | |
| wear layer | solution dyed polyester |
| backing | polyester felt cushion |
| total weight (nominal average) | 4.5 oz – 5.2 oz / square foot |
| total thickness (nominal average) | 0.205 inches |
| dimensions | 24 x 24 inch modules |
| packaging | eighteen modules per box, 72 square feet |
| Environmental Attributes | |
| recyclability | 100% closed-loop recyclable |
| recycled content | >55% (post consumer/industrial) |
| LEED scorecard | IEQ 4.1 and IEQ 4.3 |
| NSF/ANSI 140 certification | platinum |
| Testing | |
| flooring radiant panel | class 1 |
| smoke density | less than 450 (flaming & non-flaming) |
| electrostatic propensity | less than 3.0 kv |
| colorfastness to light | rating of 4.0 or greater |
| colorfastness to crocking | rating of 4.0 or greater |
| water repellency | rating of 4.0 or greater |
| appearance retention | 4.0 or greater |
| slip resistance | Complies with ADA Guidelines for level surface NFSI Certified High-Traction |
| thermal insulation | 0.73 |
| noise reduction coefficient | NRC Rating: 0.30* |
| impact insulation classification | IIC Rating: 64** |
| stain resistance | resists most challenging stains |
| indoor air quality certification | CRI Green Label Plus™ |
| Adhesive | Kinetex Adhesive or PreFix® pre-applied releasable adhesive |

Installation Methods



quarter turn



FLOORING

A DIVISION OF ENGINEERED FLOORS

jjflooring.com

P.O. Box 1287
Dalton, GA 30722
p 800 241 4586
f 706 275 4433

carpet | lvt | kinetex
